

BARRIE SIMCOE EMERGENCY SERVICES CAMPUS



BARRIE POLICE SERVICE

Inside the Call

November 23, 2020

Please Note

This presentation includes some images that were taken prior to COVID-19.





74,000 Occurrences in 2019

Understanding What Happens



Understanding What Happens



Please Note: Audio will play on this slide



Please Note: Video will play on this slide





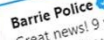
Barrie Police ✓
@BarriePolice

Barrie Police Service official Twitter Account. In case of an emergency dial 911 | For non-emergencies dial 705-725-7025. This account is not monitored 24/7.
Barrie, Ontario [barriepolice.ca](https://www.barriepolice.ca) Joined February 2010

1,718 Following 54.5K Followers

Tweets

Tweets & replies



Barrie Police ✓ @BarriePolice · 14h
Great news! 9 yr old everyone for your assistance. has just been located. Thank you to



Instagram

Search



barriepolice

Follow

929 posts 11.6k followers 214 following

Barrie Police Service

Barrie Police Service official Instagram Account. In case of an emergency dial 911. For non-emergency dial (705)725-7025 Account is not monitored 24/7
www.barriepolice.ca



RCMP TRIB...



In This Tog...



Plunge '19



KoolFM is ...



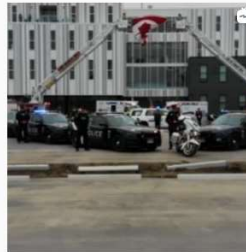
It's Cold !



Paramedics



More Plun...



About
Community
Leave A Tip



Barrie Police Service
@barriepoliceservice

Like Share ...

Posts

Barrie Police Service ✓
14 hrs · 3
Great news! 9 yr old everyone for your assistance.

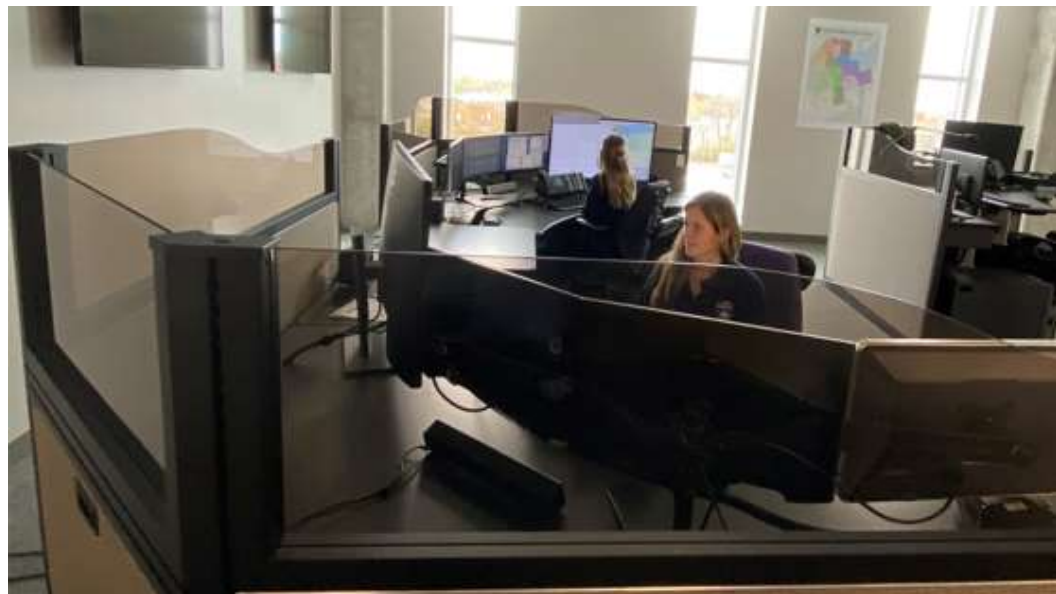
has just been located. Thank you to

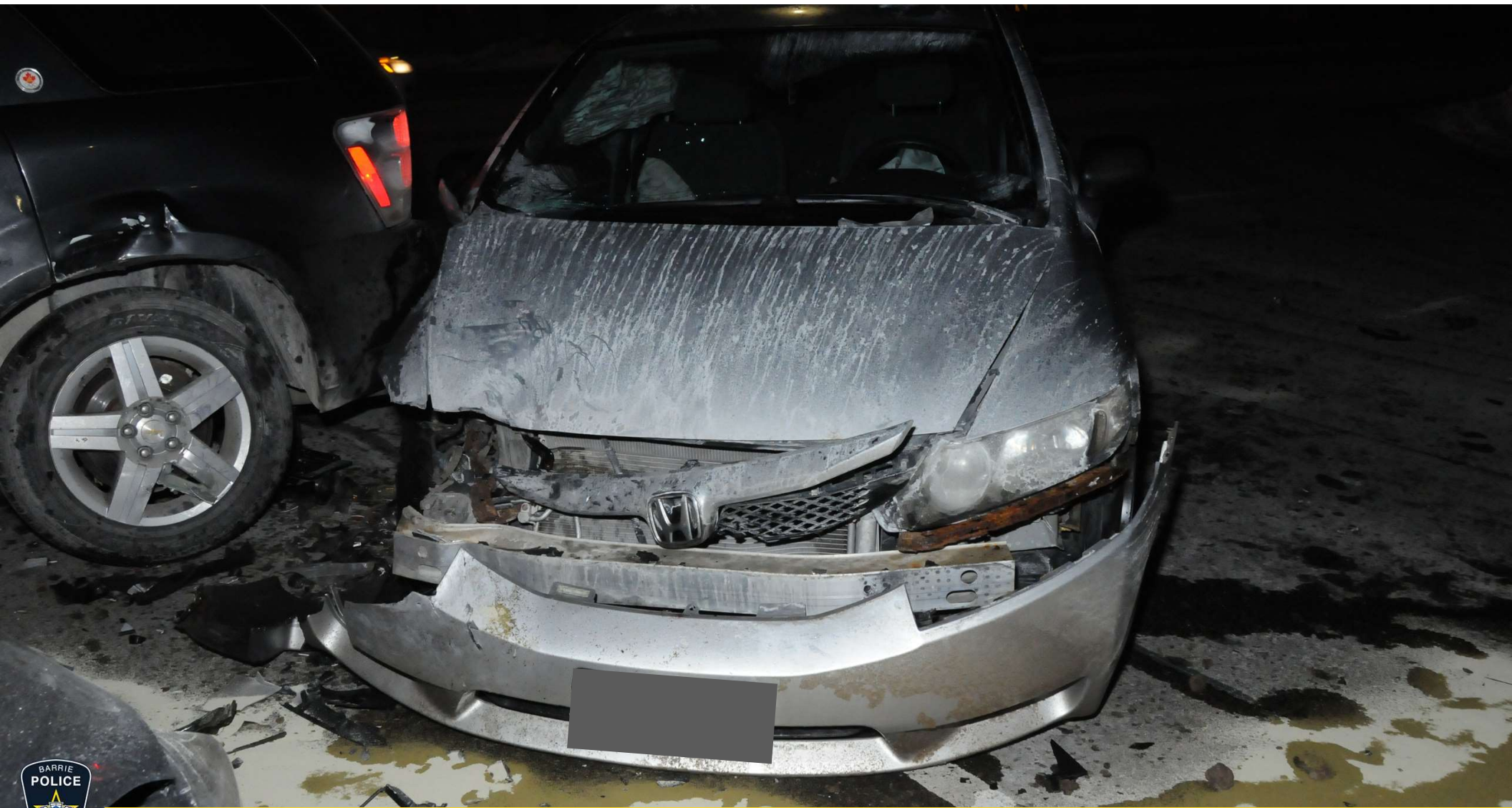
Police Station in Barrie, Ontario
Always Open

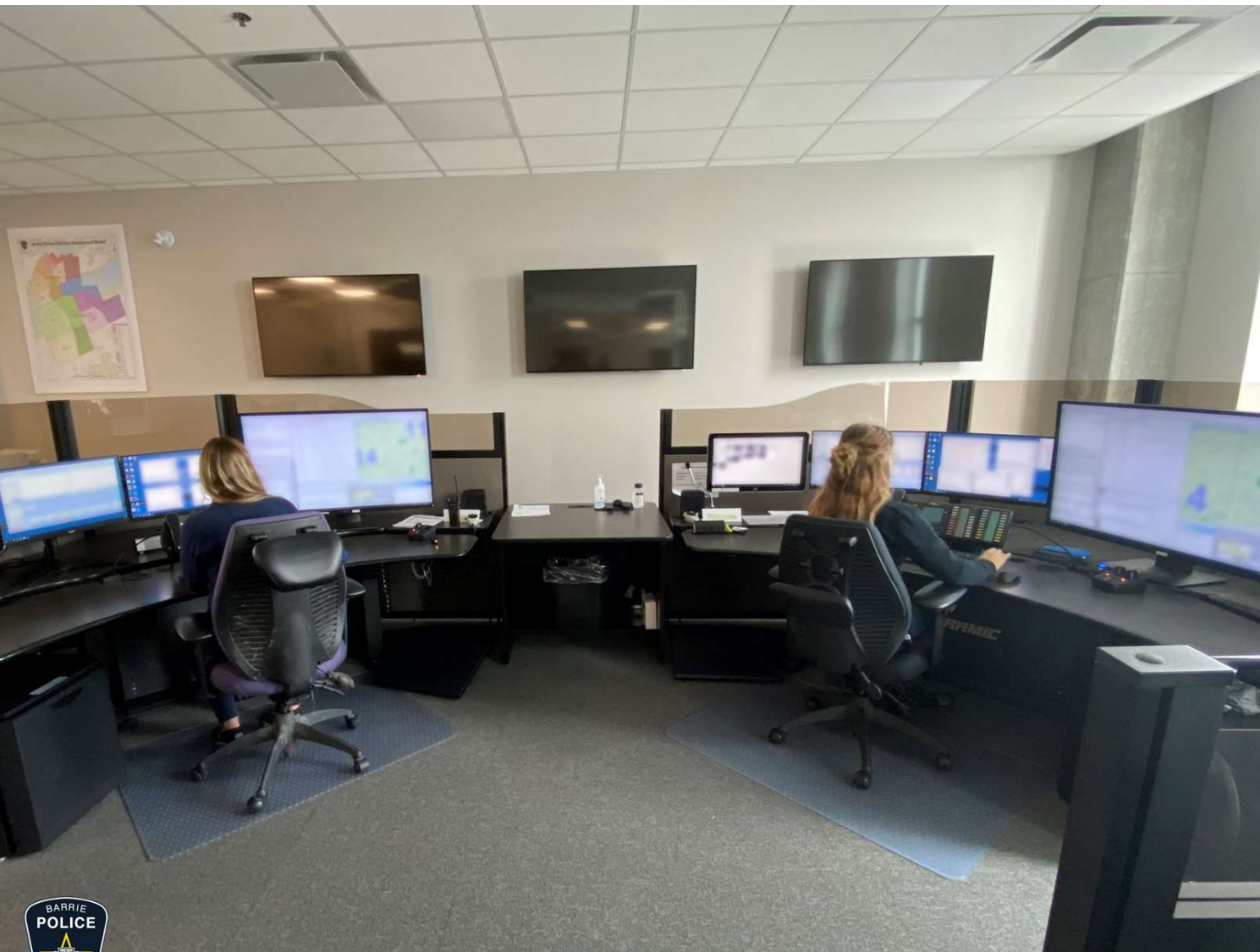
Community

17,614 people like this
18,725 people follow this
199 check-ins









Those involved in the call:



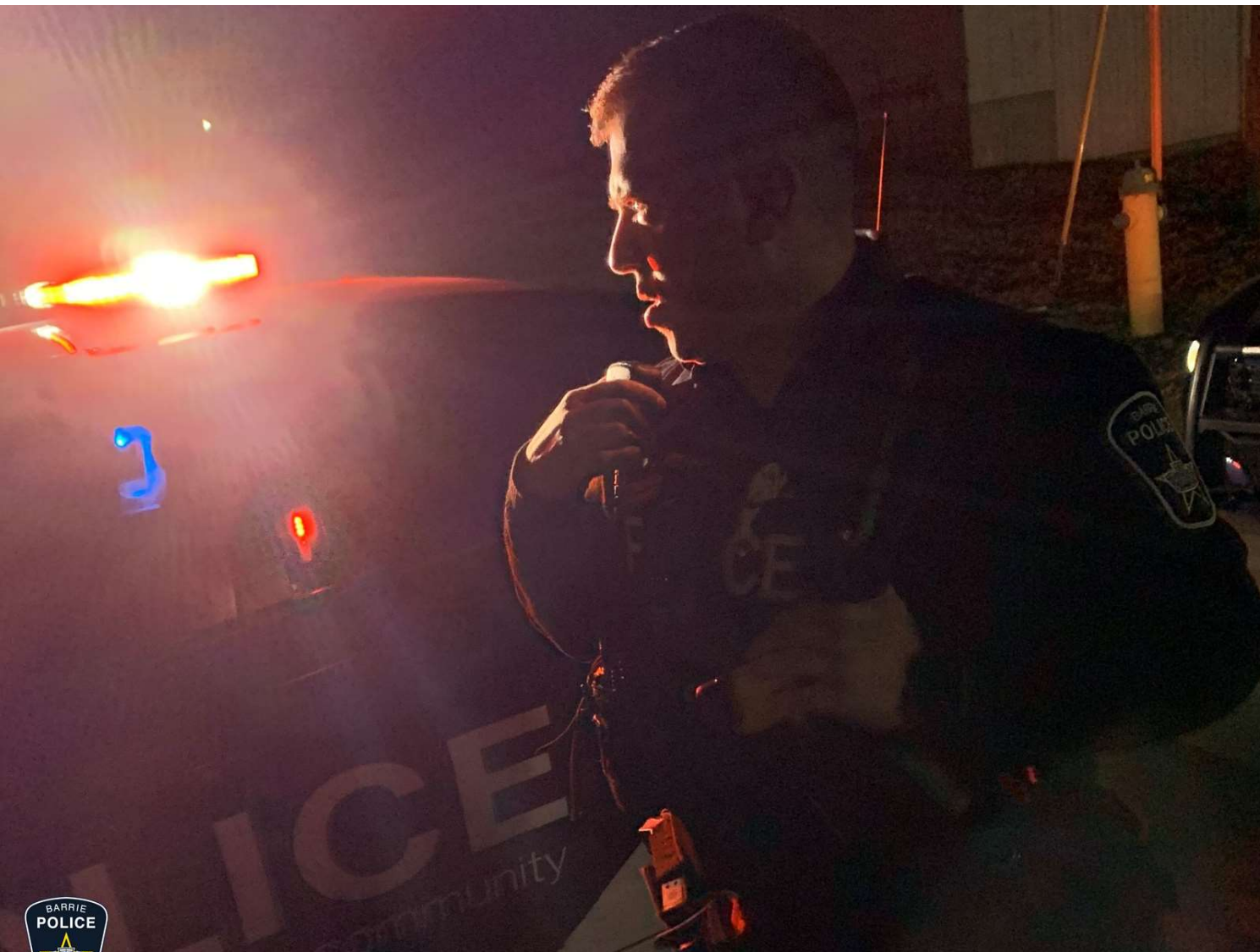
Communications Unit
(Dispatch)



BPS Resources



Community Partner Resources



Those involved in the call:



Communications Unit
(Dispatch)



Front Line Officer



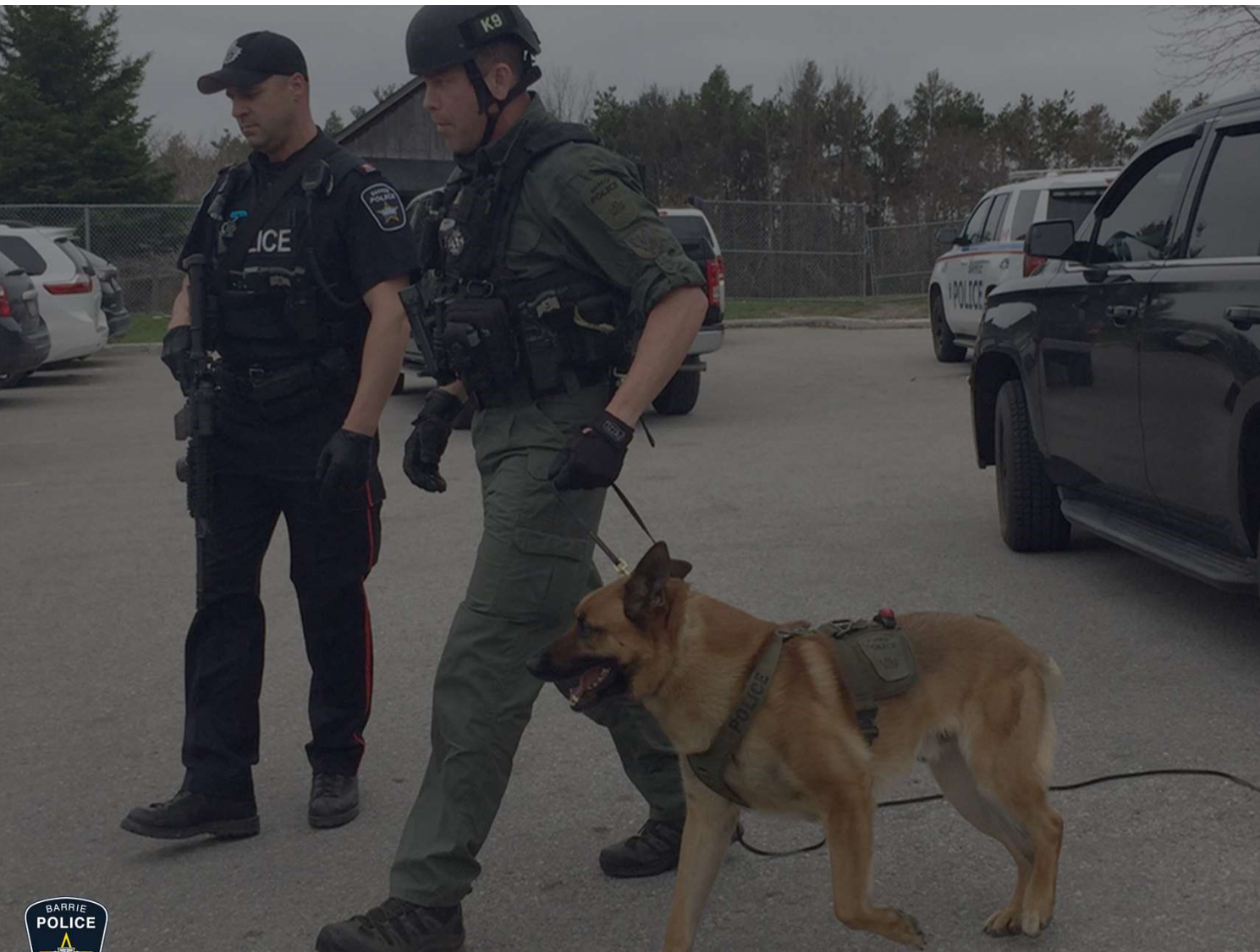
Traffic Unit



BPS Resources



Community Partner Resources



Those involved in the call:



Communications Unit
(Dispatch)



Front Line Officer



Traffic Unit



Patrol Sergeant



K9 Unit



Tactical Support Unit (TSU)





BPS Resources



Community Partner Resources



Those involved in the call:

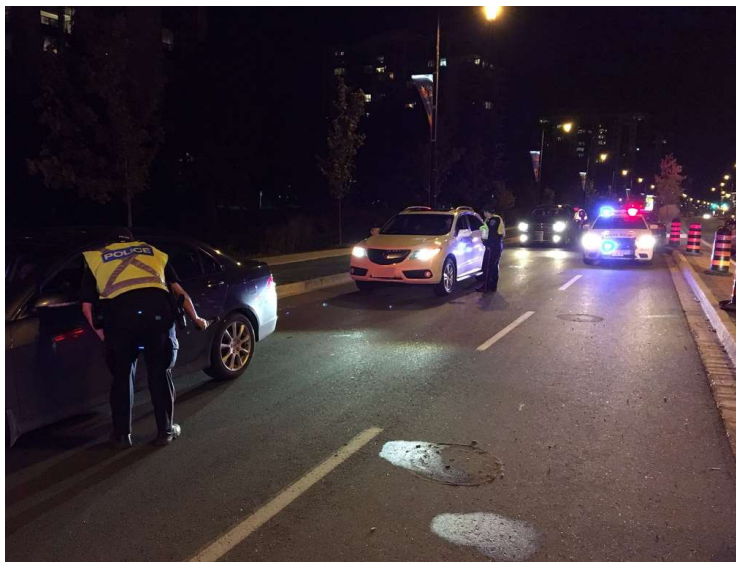
-  Communications Unit (Dispatch)
-  Front Line Officer
-  Traffic Unit
-  Patrol Sergeant
-  K9 Unit
-  Tactical Support Unit (TSU)
-  County of Simcoe Paramedics













BPS Resources



Community Partner Resources



Those involved in the call:

-  **Communications Unit (Dispatch)**
-  **Front Line Officer**
-  **Traffic Unit**
-  **Patrol Sergeant**
-  **K9 Unit**
-  **Tactical Support Unit (TSU)**
-  **County of Simcoe Paramedics**
-  **Contracted Tow Truck Companies**
-  **Forensic Identification Unit**
-  **Barrie Fire & Emergency Services**

 **BPS Resources**

 **Community Partner Resources**





Those involved in the call:



Communications Unit
(Dispatch)



Front Line Officer



Traffic Unit



Patrol Sergeant



K9 Unit



Tactical Support Unit (TSU)



County of Simcoe Paramedics



Contracted Tow Truck Companies



Forensic Identification Unit



Barrie Fire & Emergency Services



BPS Resources














Community Partner Resources





Those involved in the call:

-  Communications Unit (Dispatch)
-  Front Line Officer
-  Traffic Unit
-  Patrol Sergeant
-  K9 Unit
-  Tactical Support Unit (TSU)
-  County of Simcoe Paramedics
-  Contracted Tow Truck Companies
-  Forensic Identification Unit
-  Barrie Fire & Emergency Services
-  Case Management Unit



BPS Resources



Community Partner Resources





Those involved in the call:

-  Communications Unit (Dispatch)
-  Front Line Officer
-  Traffic Unit
-  Patrol Sergeant
-  K9 Unit
-  Tactical Support Unit (TSU)
-  County of Simcoe Paramedics
-  Contracted Tow Truck Companies
-  Forensic Identification Unit
-  Barrie Fire & Emergency Services
-  Case Management Unit
-  Special Constable Booker & Booking Sergeant

 BPS Resources

 Community Partner Resources





Those involved in the call:



Communications Unit
(Dispatch)



Front Line Officer



Traffic Unit



Patrol Sergeant



K9 Unit



Tactical Support Unit (TSU)



County of Simcoe Paramedics



Contracted Tow Truck Companies



Forensic Identification Unit



Barrie Fire & Emergency Services



Case Management Unit



Special Constable Booker
& Booking Sergeant



City of Barrie Custodians



BPS Resources



Community Partner Resources



Those involved in the call:

-  Communications Unit (Dispatch)
-  Front Line Officer
-  Traffic Unit
-  Patrol Sergeant
-  K9 Unit
-  Tactical Support Unit (TSU)
-  County of Simcoe Paramedics
-  Contracted Tow Truck Companies
-  Forensic Identification Unit
-  Barrie Fire & Emergency Services
-  Case Management Unit
-  Special Constable Booker & Booking Sergeant
-  City of Barrie Custodians
-  Criminal Investigators
-  Technological Crimes Unit



BPS Resources



Community Partner Resources





Those involved in the call:



Communications Unit
(Dispatch)



Front Line Officer



Traffic Unit



Patrol Sergeant



K9 Unit



Tactical Support Unit (TSU)



County of Simcoe Paramedics



Contracted Tow Truck Companies



Forensic Identification Unit



Barrie Fire & Emergency Services



Case Management Unit



Special Constable Booker
& Booking Sergeant



City of Barrie Custodians



Criminal Investigators



Technological Crimes Unit



Records & Information Management Services



Property & Evidence Unit



BPS Resources



Community Partner Resources

2046

Victims
Services



Those involved in the call:



Communications Unit
(Dispatch)



Front Line Officer



Traffic Unit



Patrol Sergeant



K9 Unit



Tactical Support Unit (TSU)



County of Simcoe Paramedics



Contracted Tow Truck Companies



Forensic Identification Unit



Barrie Fire & Emergency Services



Case Management Unit



Special Constable Booker
& Booking Sergeant



City of Barrie Custodians



Criminal Investigators



Technological Crimes Unit



Records & Information Management Services



Property & Evidence Unit



Royal Victoria Regional Health Centre (RVRHC)



Victim Crisis Assistance & Referral Service (VCARS)






















BPS Resources



Community Partner Resources



Those involved in the call:

-  Communications Unit (Dispatch)
-  Front Line Officer
-  Traffic Unit
-  Patrol Sergeant
-  K9 Unit
-  Tactical Support Unit (TSU)
-  County of Simcoe Paramedics
-  Contracted Tow Truck Companies
-  Forensic Identification Unit
-  Barrie Fire & Emergency Services
-  Case Management Unit
-  Special Constable Booker & Booking Sergeant
-  City of Barrie Custodians
-  Criminal Investigators
-  Technological Crimes Unit
-  Records & Information Management Services
-  Property & Evidence Unit
-  Royal Victoria Regional Health Centre (RVRHC)
-  Victim Crisis Assistance & Referral Service (VCARS)



BPS Resources



Community Partner Resources





BARRIE POLICE SERVICE

Those involved in the call:

-  Communications Unit (Dispatch)
-  Front Line Officer
-  Traffic Unit
-  Patrol Sergeant
-  K9 Unit
-  Tactical Support Unit (TSU)
-  County of Simcoe Paramedics
-  Contracted Tow Truck Companies
-  Forensic Identification Unit
-  Barrie Fire & Emergency Services
-  Case Management Unit
-  Special Constable Booker & Booking Sergeant
-  City of Barrie Custodians
-  Criminal Investigators
-  Technological Crimes Unit
-  Records & Information Management Services
-  Property & Evidence Unit
-  Royal Victoria Regional Health Centre (RVRHC)
-  Victim Crisis Assistance & Referral Service (VCARS)
-  Station Duty Officer
-  Canadian Mental Health Association (CMHA)
-  Crisis Outreach And Support Team (C.O.A.S.T.)



BPS Resources



Community Partner Resources





Those involved in the call:



Communications Unit
(Dispatch)



Wellness Coordinator



Front Line Officer



Traffic Unit



Patrol Sergeant



K9 Unit



Tactical Support Unit (TSU)



County of Simcoe Paramedics



Contracted Tow Truck Companies



Forensic Identification Unit



Barrie Fire & Emergency Services



Case Management Unit



Special Constable Booker
& Booking Sergeant



City of Barrie Custodians



Criminal Investigators



Technological Crimes Unit



Records & Information Management Services



Property & Evidence Unit



Royal Victoria Regional Health Centre (RVRHC)



Victim Crisis Assistance & Referral Service (VCARS)



Station Duty Officer



Canadian Mental Health Association (CMHA)



Crisis Outreach And Support Team (C.O.A.S.T.)



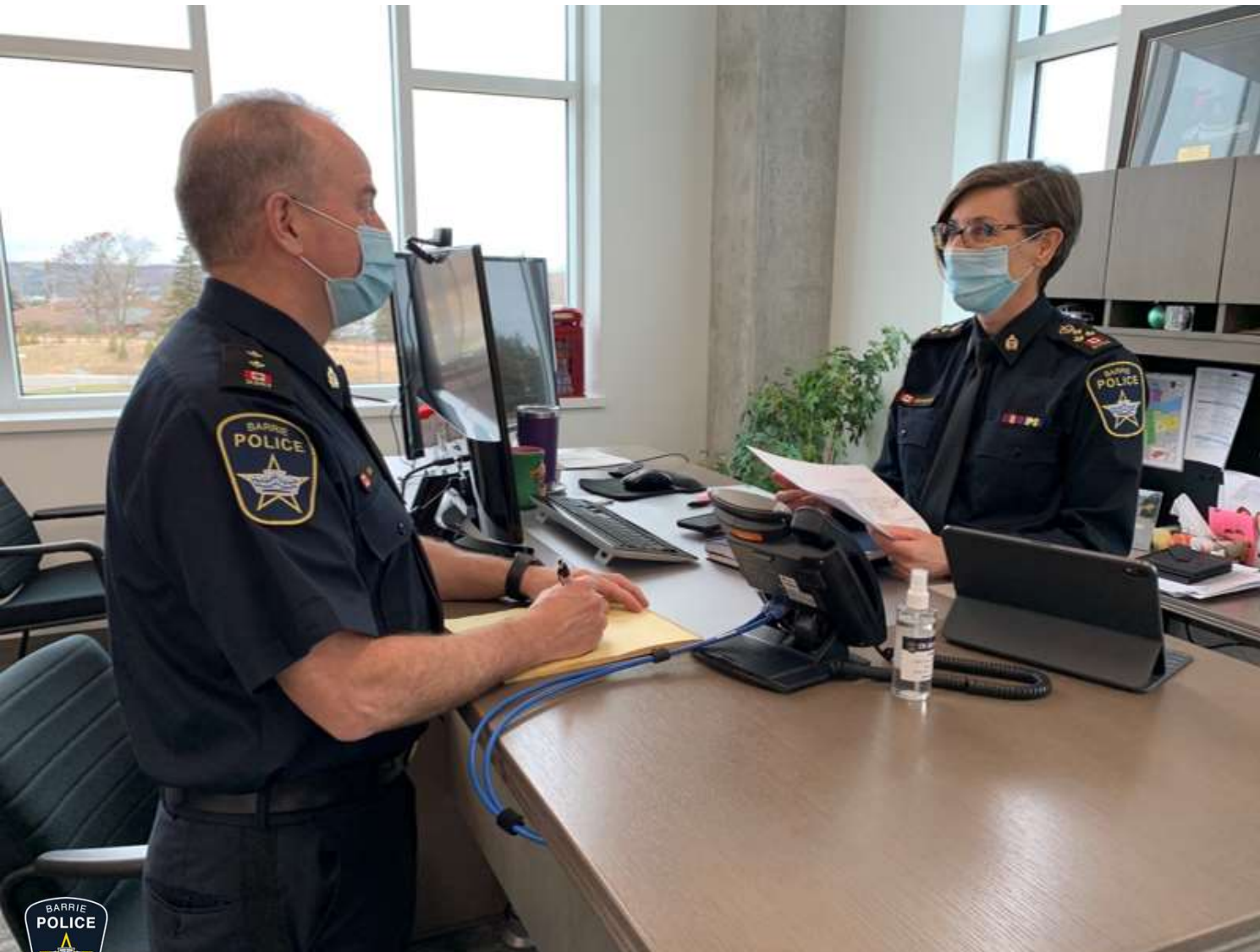
Duty Staff Sergeant



BPS Resources



Community Partner Resources



Those involved in the call:



Communications Unit
(Dispatch)



Front Line Officer



Traffic Unit



Patrol Sergeant



K9 Unit



Tactical Support Unit (TSU)



County of Simcoe Paramedics



Contracted Tow Truck Companies



Forensic Identification Unit



Barrie Fire & Emergency Services



Case Management Unit



Special Constable Booker
& Booking Sergeant



City of Barrie Custodians



Criminal Investigators



Technological Crimes Unit



Records & Information Management Services



Property & Evidence Unit



Royal Victoria Regional Health Centre (RVRHC)



Victim Crisis Assistance & Referral Service (VCARS)



Station Duty Officer



Canadian Mental Health Association (CMHA)



Crisis Outreach And Support Team (C.O.A.S.T.)



Duty Staff Sergeant



BPS Resources



Community Partner Resources



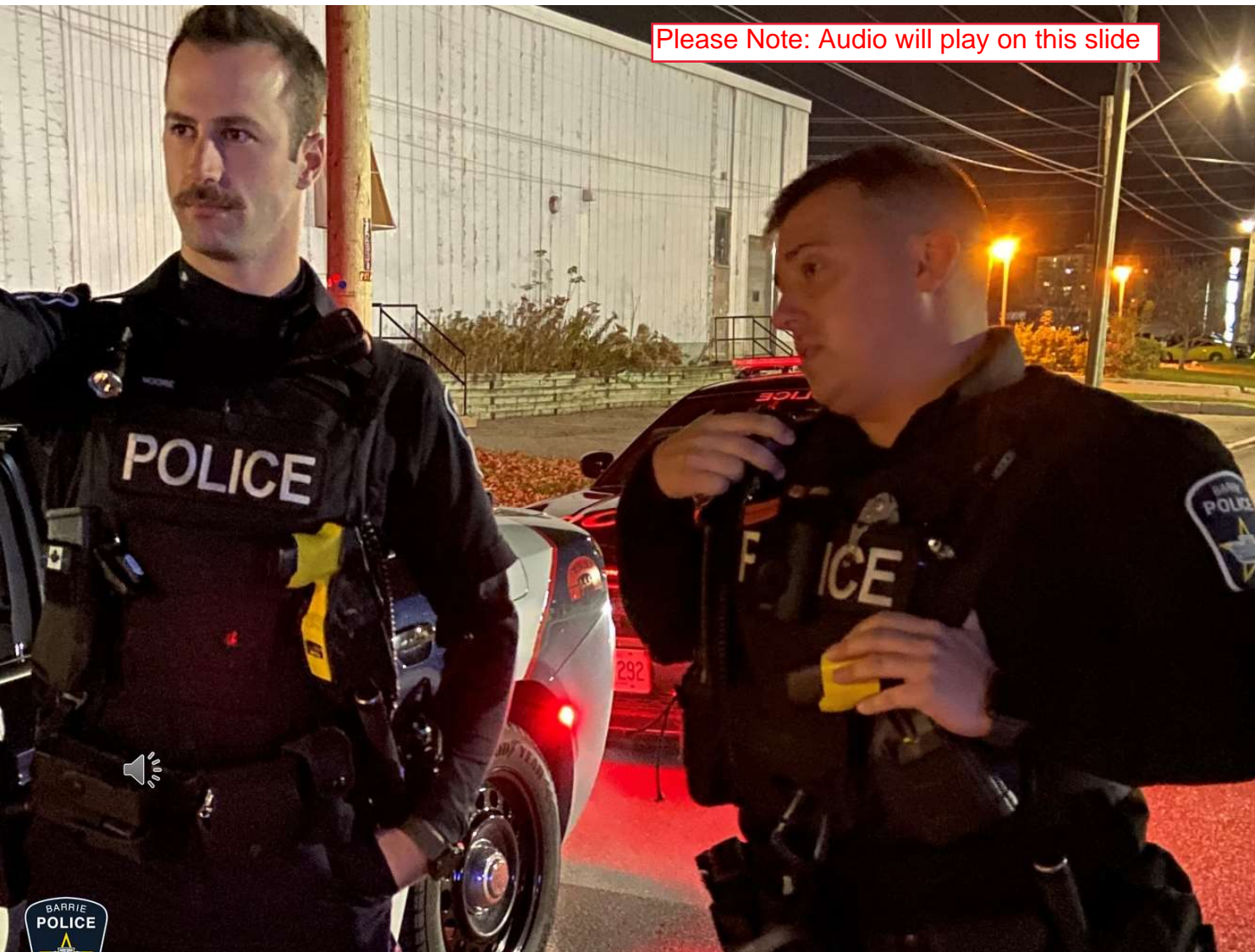
Those involved in the call:

- | | |
|---|--|
|  Communications Unit (Dispatch) |  Wellness Coordinator |
|  Front Line Officer |  Corporate Communications Unit (Media) |
|  Traffic Unit |  Chief & Police Services Board |
|  Patrol Sergeant |  Courts Unit |
|  K9 Unit |  Crown Attorney Office |
|  Tactical Support Unit (TSU) |  Ministry of Attorney General |
|  County of Simcoe Paramedics |  Victim & Witness Assistance Program (VWAP) |
|  Contracted Tow Truck Companies | |
|  Forensic Identification Unit | |
|  Barrie Fire & Emergency Services | |
|  Case Management Unit | |
|  Special Constable Booker & Booking Sergeant | |
|  City of Barrie Custodians | |
|  Criminal Investigators | |
|  Technological Crimes Unit | |
|  Records & Information Management Services | |
|  Property & Evidence Unit | |
|  Royal Victoria Regional Health Centre (RVRHC) | |
|  Victim Crisis Assistance & Referral Service (VCARS) | |
|  Station Duty Officer | |
|  Canadian Mental Health Association (CMHA) | |
|  Crisis Outreach And Support Team (C.O.A.S.T.) | |
|  Duty Staff Sergeant | |















 BPS Resources

 Community Partner Resources

Please Note: Audio will play on this slide



Those involved in the call:

- | | |
|---|--|
|  Communications Unit (Dispatch) |  Wellness Coordinator |
|  Front Line Officer |  Corporate Communications Unit (Media) |
|  Traffic Unit |  Chief & Police Services Board |
|  Patrol Sergeant |  Courts Unit |
|  K9 Unit |  Crown Attorney Office |
|  Tactical Support Unit (TSU) |  Ministry of Attorney General |
|  County of Simcoe Paramedics |  Victim & Witness Assistance Program (VWAP) |
|  Contracted Tow Truck Companies | |
|  Forensic Identification Unit | |
|  Barrie Fire & Emergency Services | |
|  Case Management Unit | |
|  Special Constable Booker & Booking Sergeant | |
|  City of Barrie Custodians | |
|  Criminal Investigators | |
|  Technological Crimes Unit | |
|  Records & Information Management Services | |
|  Property & Evidence Unit | |
|  Royal Victoria Regional Health Centre (RVRHC) | |
|  Victim Crisis Assistance & Referral Service (VCARS) | |
|  Station Duty Officer | |
|  Canadian Mental Health Association (CMHA) | |
|  Crisis Outreach And Support Team (C.O.A.S.T.) | |
|  Duty Staff Sergeant | |



BPS Resources



Community Partner Resources

Those involved in the call:



Communications Unit (Dispatch)



Front Line Officer



Traffic Unit



Patrol Sergeant



K9 Unit



Tactical Support Unit (TSU)



County of Simcoe Paramedic Services



Contracted Tow Truck Companies



Forensic Identification Unit



Barrie Fire & Emergency Services



Case Management Unit



Special Constable Booker & Booking Sergeant



City of Barrie Custodians



Criminal Investigators



Technological Crimes Unit



Records & Information Management Services



Property & Evidence Unit



Royal Victoria Regional Health Centre (RVRHC)



Victim Crisis Assistance & Referral Service (VCARS)



Station Duty Officer



Canadian Mental Health Association (CMHA)



Crisis Outreach And Support Team (C.O.A.S.T.)



Duty Staff Sergeant



Wellness Coordinator



Corporate Communications Unit (Media)



Chief & Police Services Board



Courts Unit



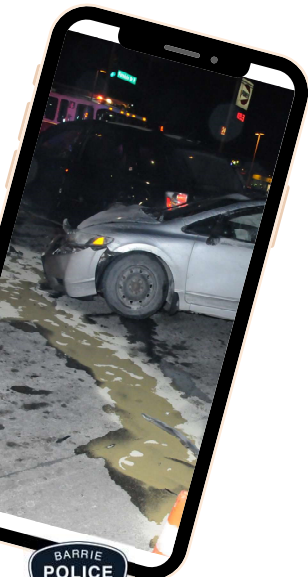
Crown Attorney Office



Ministry of Attorney General



Victim & Witness Assistance Program (VWAP)



In the Year 2019

74,000	Occurrences in 2019
297	Motor vehicle collisions with personal injuries
932	Cars reported stolen
191	K9 Teams called out to assist in calls
7,052	Arrests made
572	C.O.A.S.T. attended mental health calls
3,113	Prisoners lodged
3,180	Fingerprints taken for criminal charges
5,001	Crown briefs created
135	Electronic devices analyzed by the Technical Data Recovery Examiner







Vision:

Policing excellence to ensure a safe and secure community.

Mission:

To enhance our community by providing professional, accountable and sustainable policing services.

Values:

Through our actions and dedication, we model the principles of: Professionalism, Respect, Integrity, Diversity and Excellence.

2020-2022 Strategic Priorities



**Crime Prevention,
Community Safety
and Law Enforcement**



**Community
Engagement and
Collaboration**



**Organization
Excellence and
Sustainability**



committed to our community



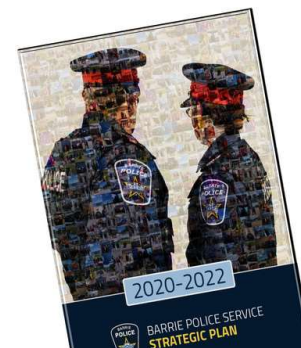
**CRIME PREVENTION,
COMMUNITY SAFETY AND
LAW ENFORCEMENT**



**COMMUNITY ENGAGEMENT
AND COLLABORATION**



**ORGANIZATION EXCELLENCE
AND SUSTAINABILITY**



2020 BPS Community Safety Survey

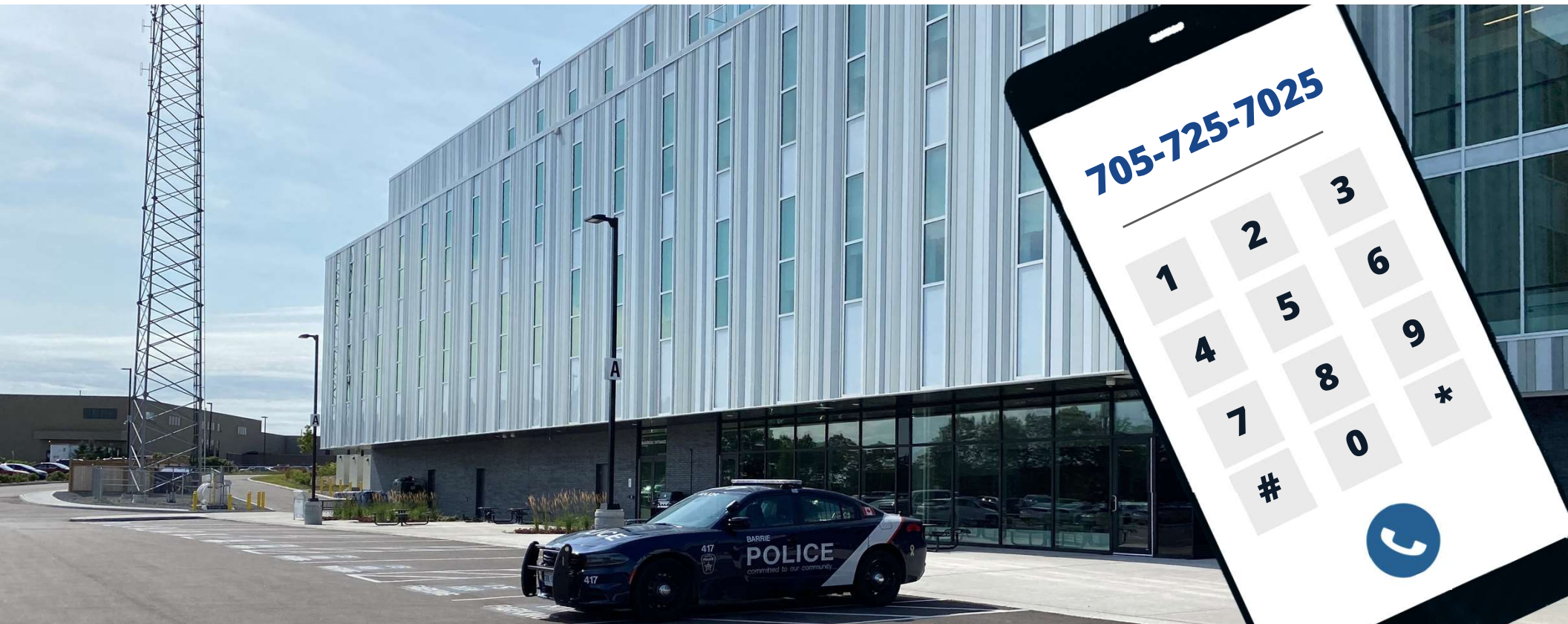


The completely confidential survey is available online and takes just minutes to complete. Share your feedback on the top issues facing your neighbourhood, how safe you feel in various locations during the day, and at night, as well as satisfaction with the Barrie Police Service.

www.barriepolice.ca/survey

Open until December 11, 2020





BARRIE POLICE SERVICE

Inside the Call

Learn More BarriePolice.ca



110 Fairview Rd, Barrie, ON. L4N 8X8



705-725-7025



info@barriepolice.ca



@barriepoliceservice



@barriepolice