



## DEVELOPMENT SERVICES DEPARTMENT MEMORANDUM

---

**TO: MAYOR J. LEHMAN AND MEMBERS OF COUNCIL**

**FROM: B. HARLOW, MANAGER OF GIS**  
**J. ROBERTS, SUPERVISOR OF GIS OPERATIONS**

**NOTED: M. BANFIELD, RPP, DIRECTOR OF DEVELOPMENT SERVICES**  
**R. NOLAN, DIRECTOR OF INFORMATION TECHNOLOGY**  
**A. MILLER, RPP, GENERAL MANAGER OF INFRASTRUCTURE AND GROWTH MANAGEMENT**  
**R. JAMES-REID, EXECUTIVE DIRECTOR OF ACCESS BARRIE**  
**M. PROWSE, CHIEF ADMINISTRATIVE OFFICER**

**RE: SOCIAL SERVICES MAP**

**DATE: OCTOBER 19, 2020**

---

The purpose of this Memorandum is to provide members of Council with the attached Social Services Map, summarizing Social Services provided City-wide as requested by Council Motion 20-G-158 from Monday, September 28, 2020.

The majority of the data shown on the maps has been provided by the County of Simcoe and 211 Ontario. 211 Ontario is a free, confidential, province-wide helpline that helps residents quickly and easily navigate the complex network of government, health, community and social services quickly and easily. The County of Simcoe provides essential social services to the region (including Barrie) through an integrated model of service delivery. These include Children and Community Services, Ontario Works and Social Housing. This database is the most comprehensive listing of Social Services available to the City.

The database classifies services in a variety of categories (see list below) and the City's GIS branch has created an [interactive web mapping application](#) to support the static PDF maps. The web map allows users to identify and find social services within a specified distance of an address, location or point on the map by the applying buffer distances and highlights information about the organization such as the services it provides, address, phone number, and website.

The 211 Ontario database for Simcoe County is populated and maintained by Community Connections <https://centraleastontario.cioc.ca/>. They work with community partners to share listings of organizations and programs and coordinate data maintenance activities. The City of Barrie is not maintaining this data and does warrant the accuracy, completeness, content or currency of the information provided.

Any location of sensitive services, such as women's shelters are not shown on the map.



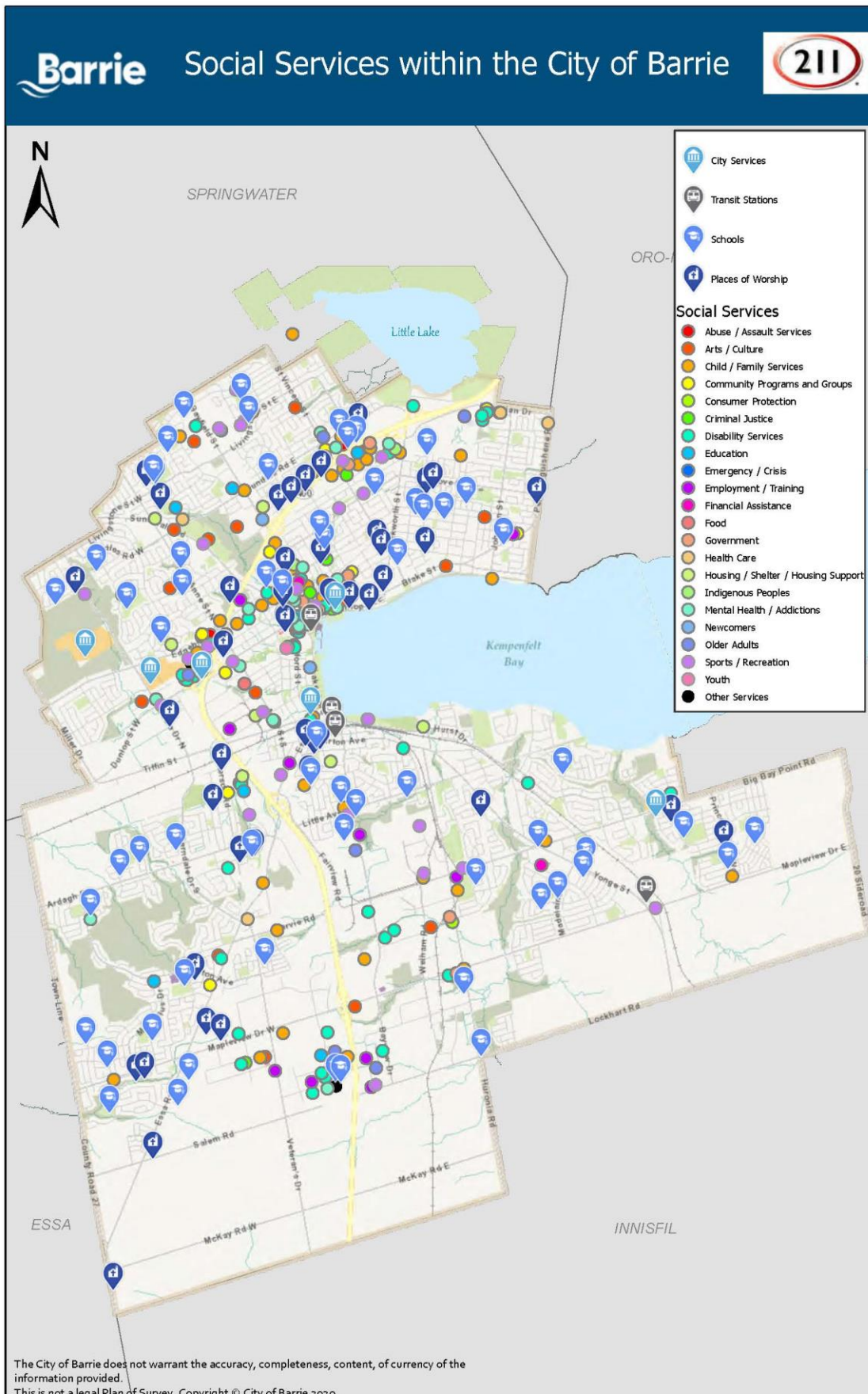
## DEVELOPMENT SERVICES DEPARTMENT MEMORANDUM

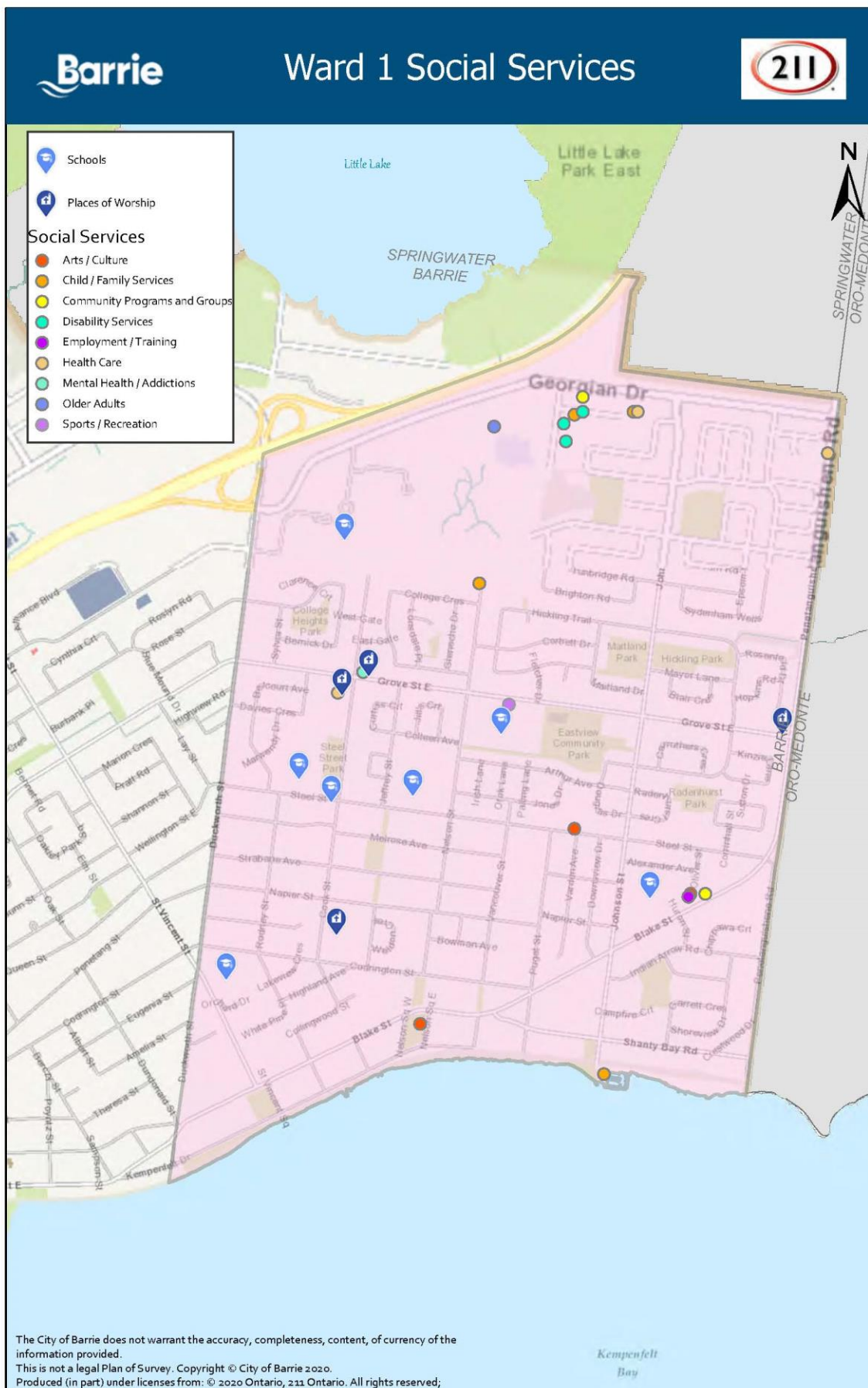
---

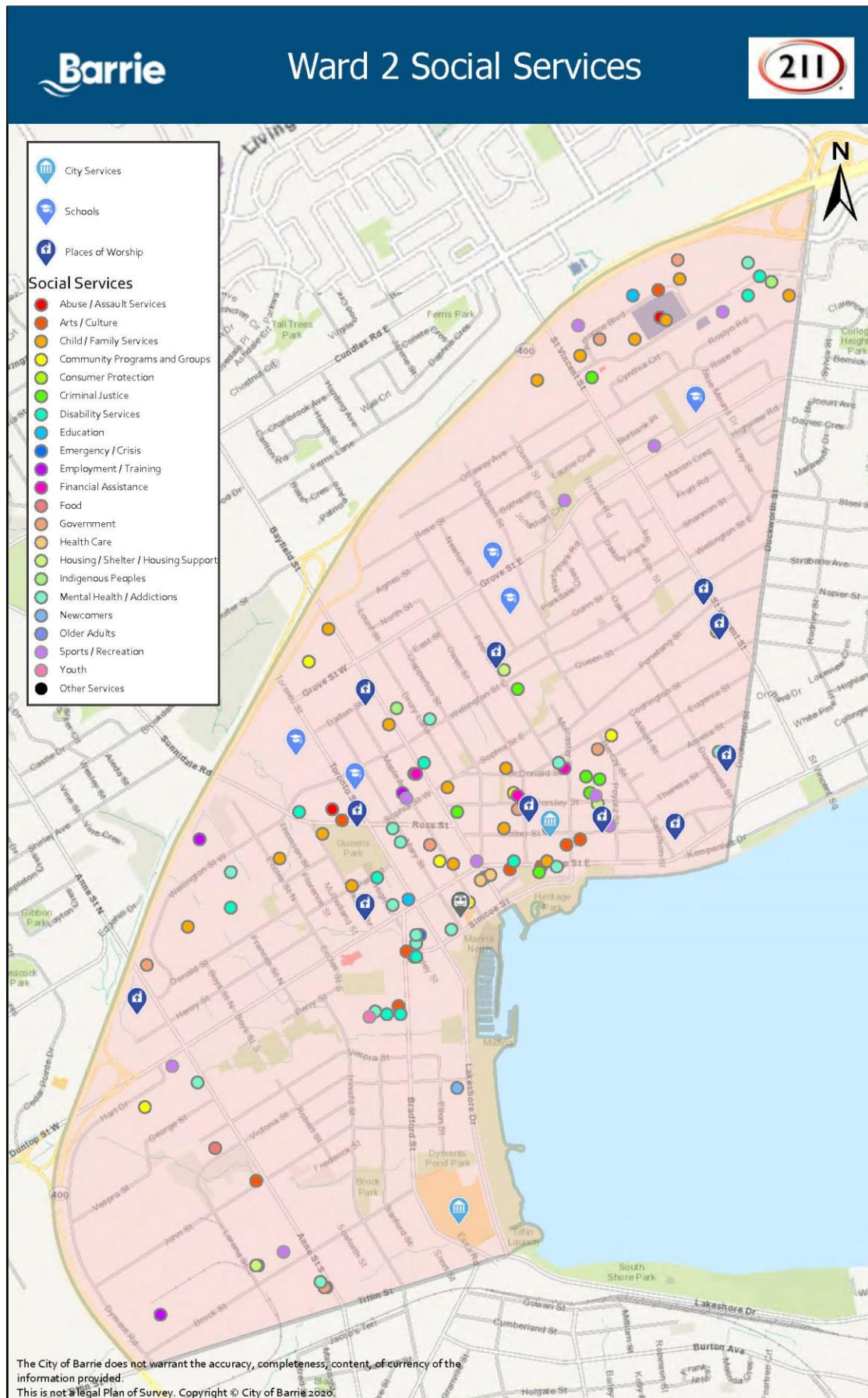
### **Categories of Social Services**

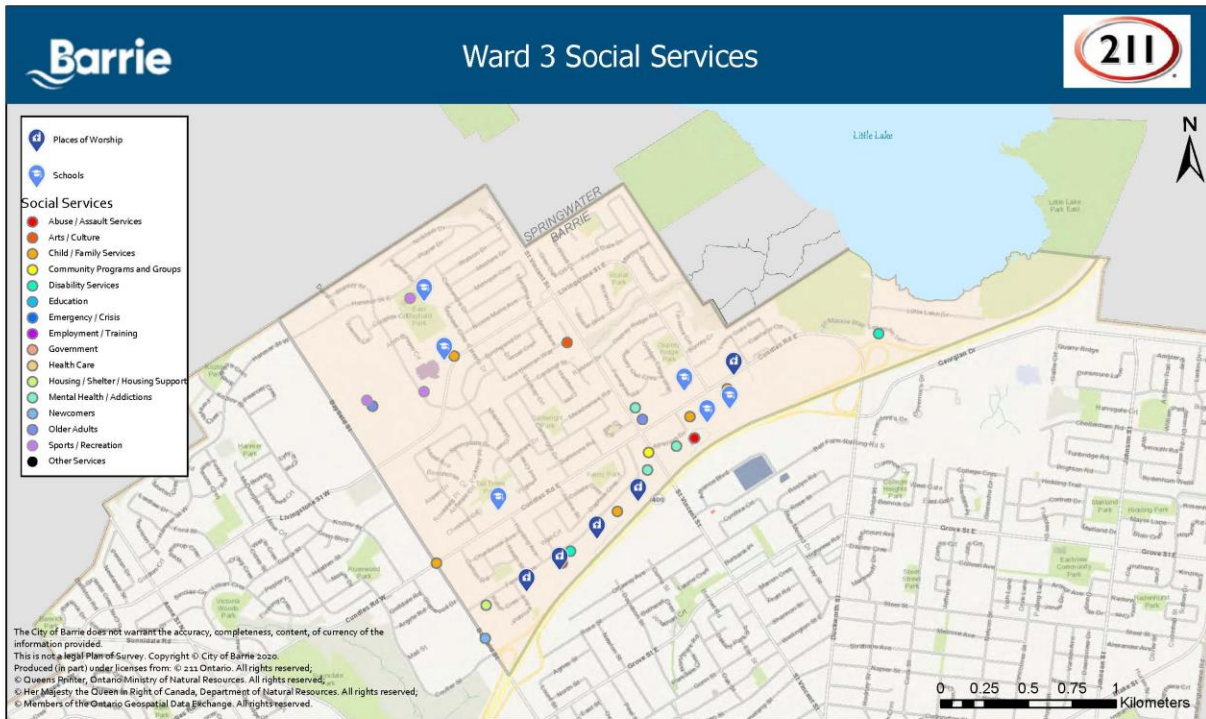
- Abuse/ Assault Services
- Child/ Family Services
- Community Programs and Groups
- Consumer Protection
- Criminal Justice
- Disability Services
- Education
- Emergency/Crisis
- Employment/ Training
- Financial Assistance
- Food
- Government
- Health Care
- Housing/ Shelter/ Housing Support
- Indigenous Peoples
- Mental Health/ Addictions
- Newcomers
- Older Adults
- Sports Recreation
- Youth
- Other Social Services.

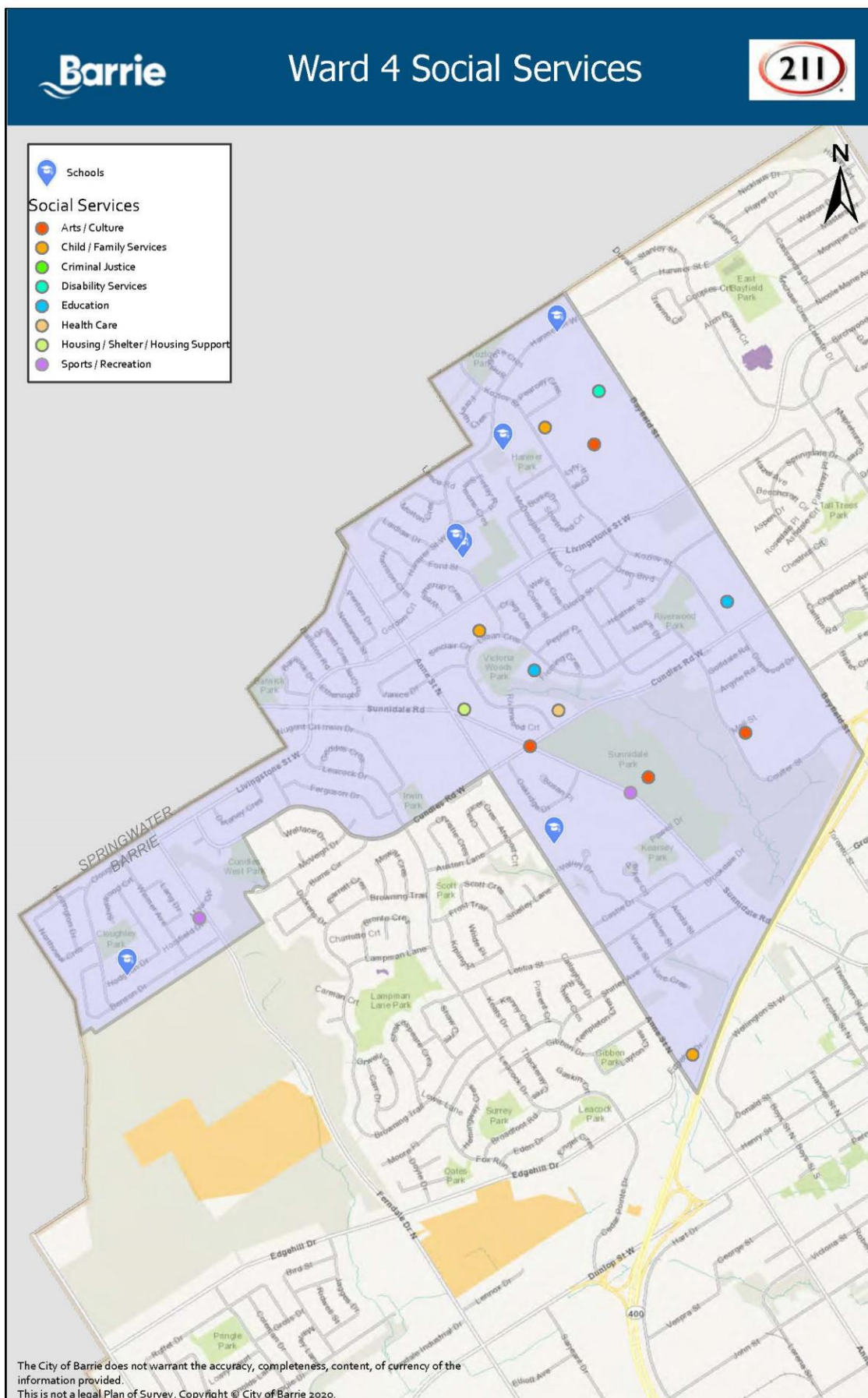
For more information, please contact Michelle Banfield, Director of Development Services at ext. 5466  
[Michelle.Banfield@barrie.ca](mailto:Michelle.Banfield@barrie.ca).

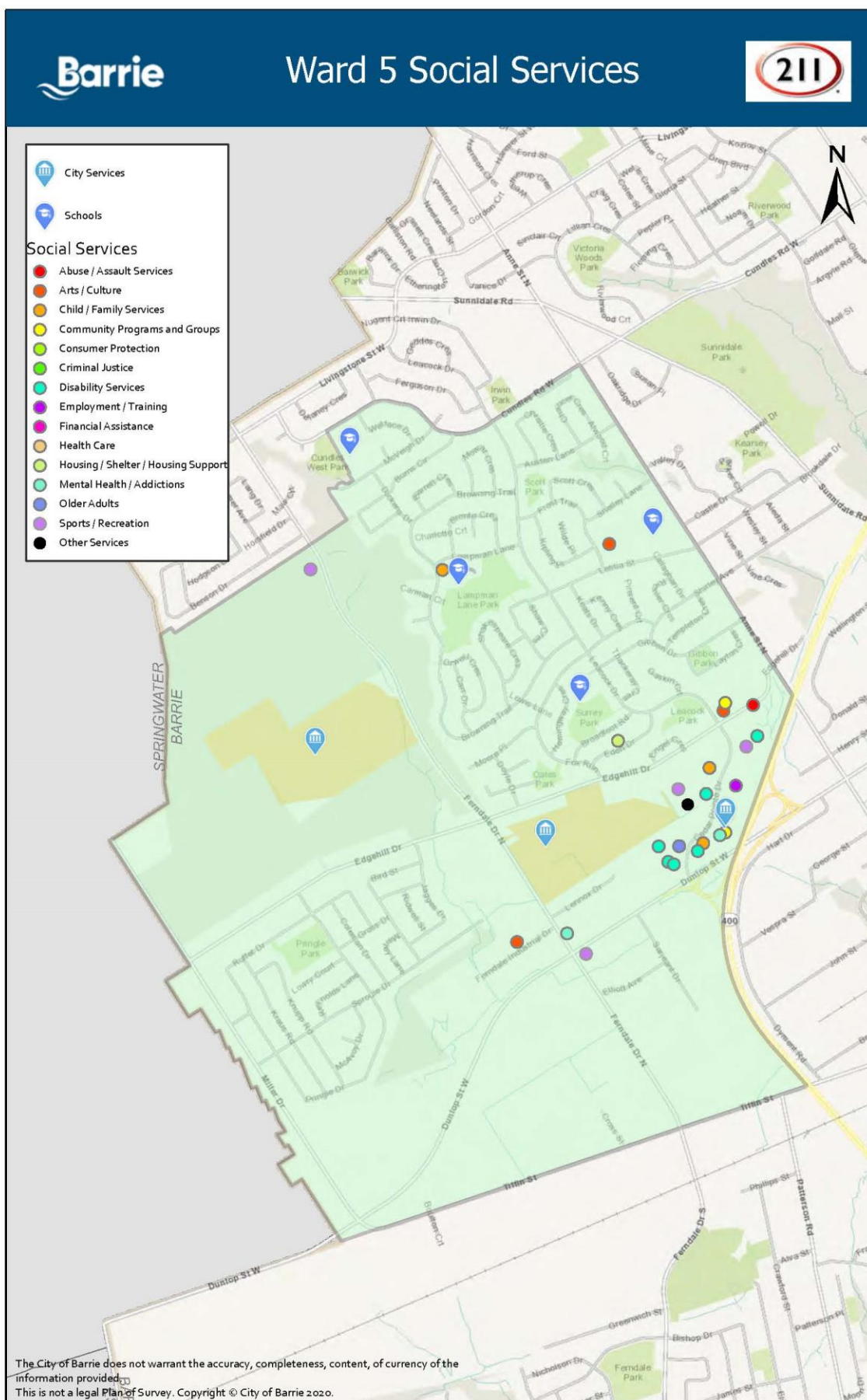


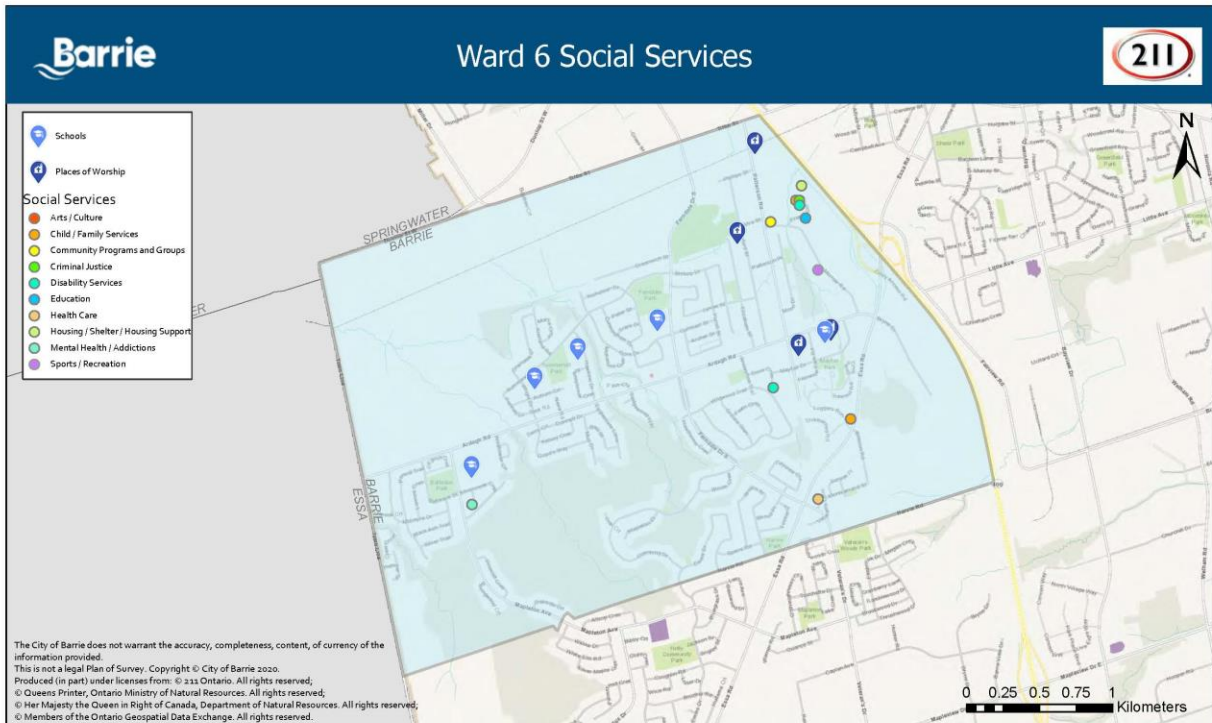




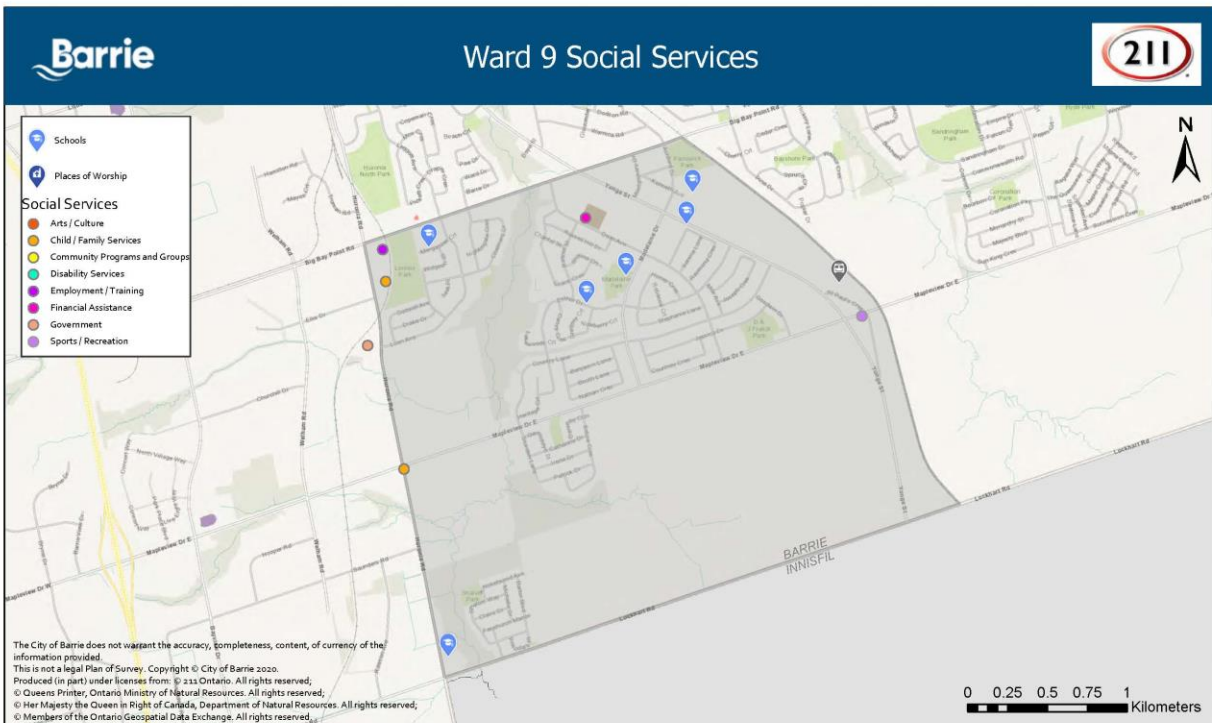












## My Social Services Web Mapping Application (Interactive Map) Tutorial


Below is a guide demonstrating how to navigate and use the [My Social Services Web application](#) and map widgets for additional functionality.

### How to Use the My Social Services Web Mapping Application



There are 4 ways to find social services using the My Social Services Web Mapping Application

1. Searching based on an address
2. Searching based on a place/location
3. Searching by placing a point on the map
4. Click on a social service point on the map


#### 1. Searching based on an Address

- a. Click on the Map Navigation widget on the top right, 
- b. Enter in the address of the property (i.e. 70 Collier St)
- c. Click enter or on the search button for the results to appear
- d. The results will appear in the window on the right


#### 2. Searching based on a place/location

- a. Click on the Map Navigation widget on the top right 
- b. Type in the name of a place/location in the City (e.g. School, Park, Place of Worship) and click enter or magnifying glass  
i. If applicable, in the search results click on the type of name of the feature (e.g. Recreation Facility, Park)
- c. Click on the name of the place/location
- d. Click on the Locate button on the bottom right of the screen 

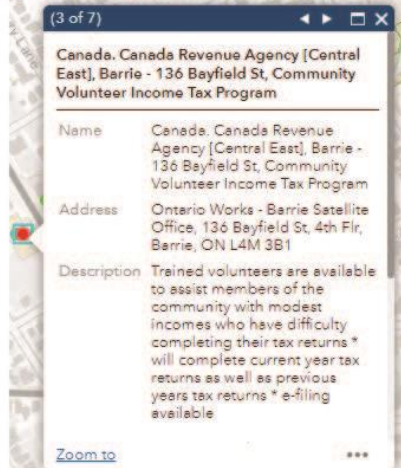
#### 3. Searching by placing a point on the map

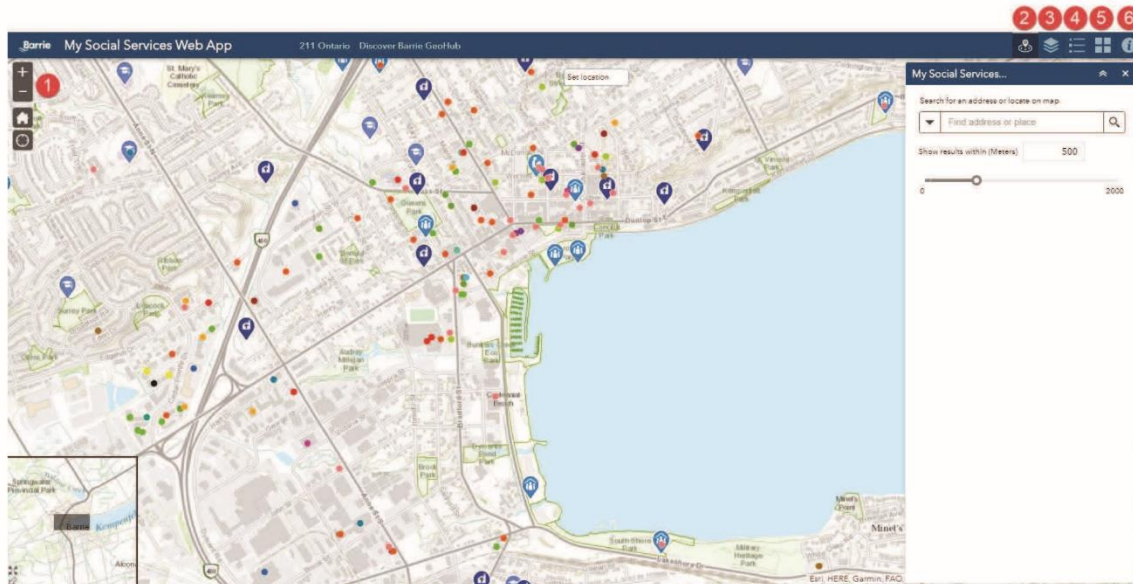
- a. Click on the Map Navigation widget on the top right 
- b. Place a point directly onto the map to set the location
- c. The results will appear in the window on the right

#### 4. Click on a social service point on the map

- a. Click on the Layers Widget on the top right 

- b. Click on the social service point on the map
- c. A pop-up window will appear with additional information about the selected point of interest
- d. If multiple points of interest are selected click on the arrow to scroll through each one





1. Map Navigation Tools
2. My Social Services and Searching the map
3. Layer List
4. Legend
5. Base Maps
6. About

## 1. Map Navigation Tools

Used to navigate around the map through zooming in and out, showing the city limits or zooming to your location.



Zoom in

Zoom out



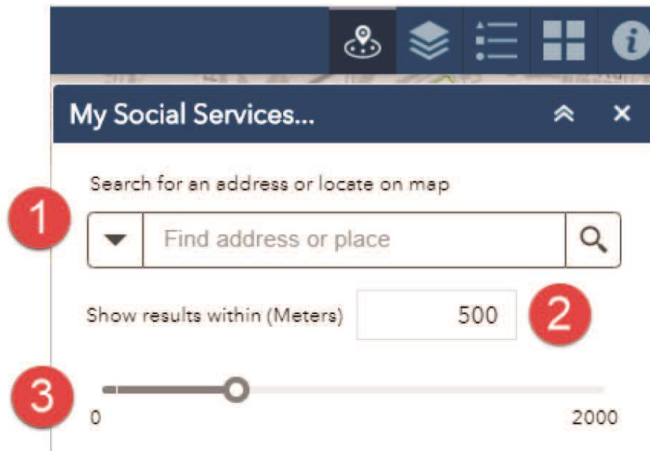
These functions can also be performed by using the scroll wheel on your mouse, or pinching in and out with your fingers

Return to the default extent of the map

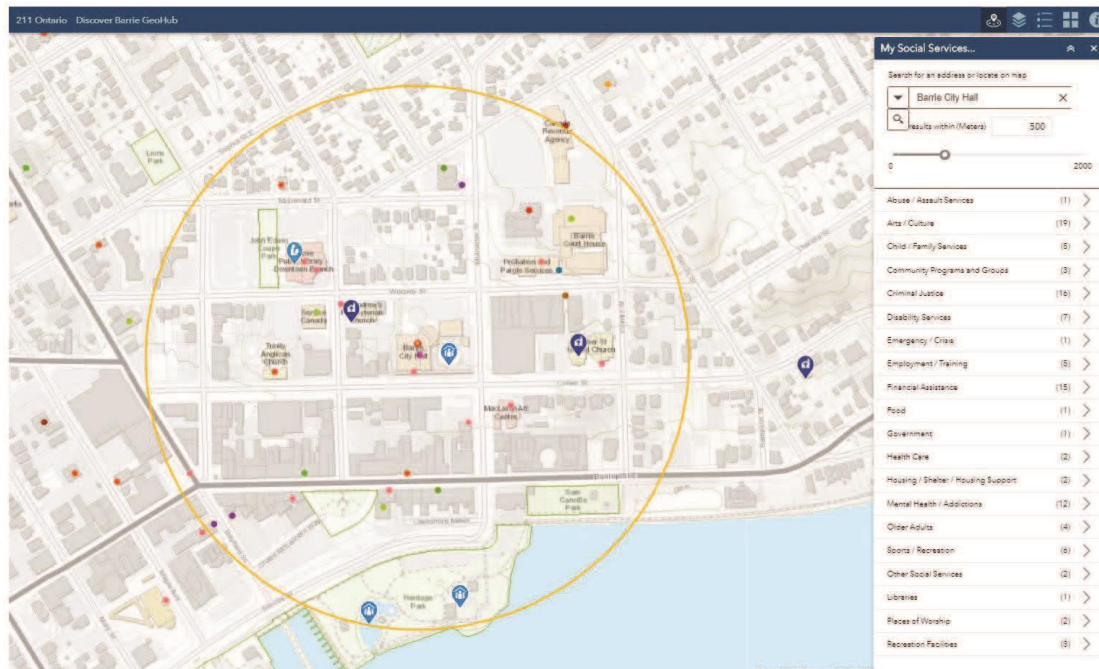
Find my current location on the map (Only available for mobile use)

## 2. My Social Services

The My Social Services widget provides the functionality to find and identify Social Services within a specified distance of an address, place (School, Park, Place of Worship, City Services) or point on the map.



1. Type an address or place name in the search box (i.e. 70 Collier Street, Sunnidale Park)
2. Type in a search radius (in metres) to locate and return social services within that specified search area
3. Drag to change the search radius to locate and return social services within that specified search area



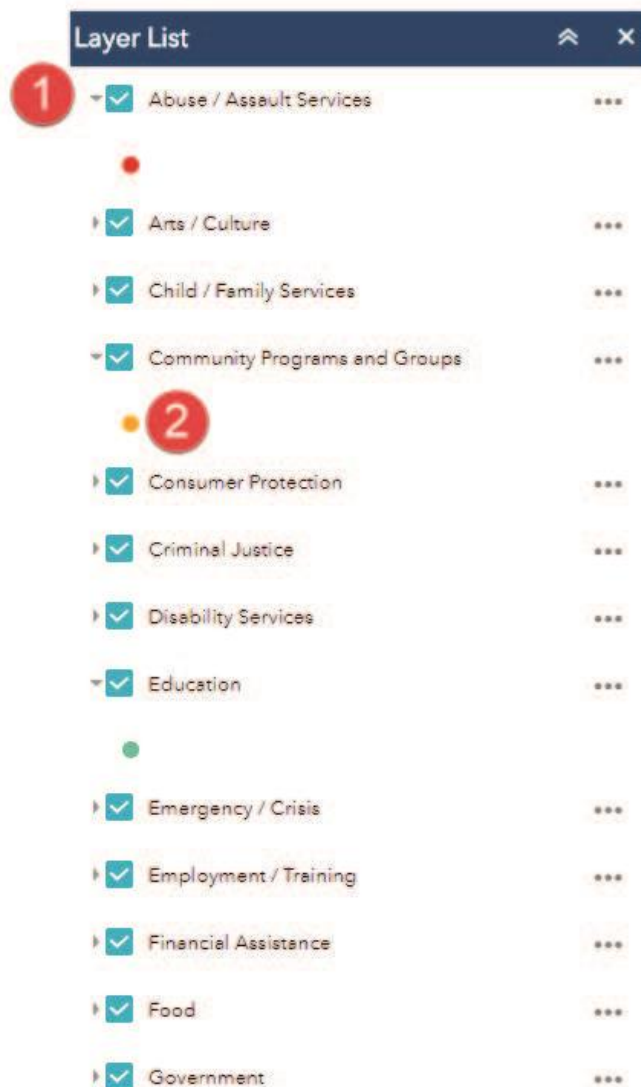
The results will show you how many services fall within the search area by Service Category.

1. Expand the category to see the services available in the search radius and
2. the distance they are from the search point.

Abuse / Assault Services	(1)	>		
Arts / Culture	(19)	>		
Child / Family Services	(5)	>	< Mental Health / Addictions	(12)
Community Programs and Groups	(3)	>	Canadian Mental Health Association, Simcoe...	263.41 m <b>2</b>
Criminal Justice	(17)	>	Canadian Mental Health Association, Simcoe...	263.41 m
Disability Services	(7)	>	Canadian Mental Health Association, Simcoe...	263.41 m
Emergency / Crisis	(1)	>	Canadian Mental Health Association, Simcoe...	263.41 m
Employment / Training	(5)	>	Family Mental Health Initiative of Simcoe Co...	263.41 m
Financial Assistance	(14)	>	Tania E. Kingston Psychotherapy	358.72 m
Food	(1)	>	Gam-Anon, Barrie	404.74 m
Government	(2)	>	Gamblers Anonymous, Barrie - No Physical A...	404.74 m
Health Care	(2)	>	Rainbows For All Children Canada, Collier St...	404.74 m
Housing / Shelter / Housing Support	(2)	>	Al-Anon / Alateen, Barrie - No Physical Address	486 m
Mental Health / Addictions	<b>1</b> (12)	<b>&gt;</b>	Canadian Mental Health Association, Simcoe C...	486 m
Older Adults	(4)	>	FAS World Barrie, Barrie Fetal Alcohol Support ...	486 m

### 3. Layer List

The Layer List widget provides a list of layers in the My Social Service mapping application and their symbols, it allows for individual layers to be turned on and off.



1. Each layer in the list has a check box that allows you to control its visibility. By default, all layers will be turned on.
2. The colour symbol for each layer is shown.

## 4. Legend

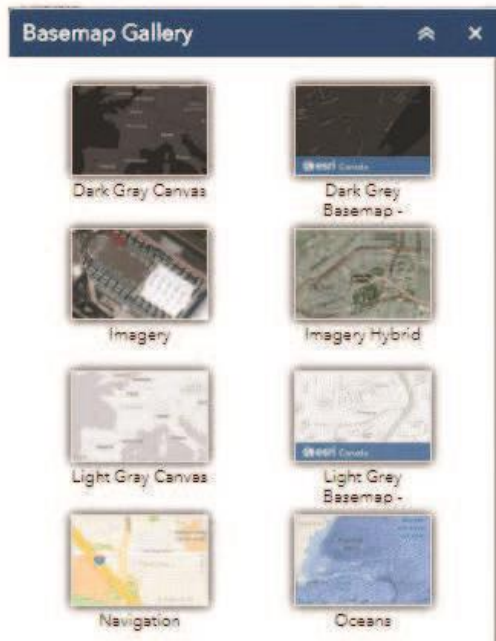
The Legend widget helps to identify what the meaning of the symbols of the maps are. The layers are listed alphabetically by name with its colour symbol representation on the map show below the name.



## 5. Basemap Gallery

The Basemap Gallery widget presents an option of different backgrounds ("basemaps") to use within the My Social Service mapping application. The "Imagery" basemap will display the aerial photos.

Click the name of the basemap to change it in the map. The default basemap is "Topography".



## 6. About

The About widget provides information about the web application and data source.

The City of Barrie My Social Services Web App allows users to search for social service points of interest in proximity to a specified location.

The City of Barrie is situated in the heart of Central Ontario, a premier waterfront community on Lake Simcoe, conveniently located an hour north of Toronto. Visit [barrie.ca](http://barrie.ca) for more information or contact Service Barrie at 705-726-4242 or [ServiceBarrie@barrie.ca](mailto:ServiceBarrie@barrie.ca)

The data in this app is reference from 211 Ontario. 211 is a helpline and online database of Ontario's community and social services. All Rights Reserved © Copyright 2020 Ontario, © Copyright City of Barrie.

Call 211 or visit [www.211ontario.ca](http://www.211ontario.ca) for information on additional Social Services in Simcoe County. For questions regarding this web mapping application, please contact the City of Barrie at 705-726-4242 or email [serviceBarrie@barrie.ca](mailto:serviceBarrie@barrie.ca)

The City of Barrie does not warrant the accuracy, completeness, content, or currency of the information provided.