



TO: GENERAL COMMITTEE


SUBJECT: INVESTIGATION REGARDING THE FEASIBILITY OF A WHEELCHAIR ACCESSIBLE PARKING SPACE - DOCK ROAD

WARD: WARD 10

PREPARED BY AND KEY CONTACT: J. MACDONALD, C.E.T. 
TRANSPORTATION TECHNOLOGIST (Ext. 5178)

SUBMITTED BY: D. FRIARY 
DIRECTOR OF ROADS, PARK, AND FLEET

GENERAL MANAGER APPROVAL: R. J. FORWARD, MBA, M.Sc., P. Eng. 
GENERAL MANAGER OF INFRASTRUCTURE AND GROWTH MANAGEMENT

CHIEF ADMINISTRATIVE OFFICER APPROVAL: C. LADD 
CHIEF ADMINISTRATIVE OFFICER

RECOMMENDED MOTION

1. That no additional barrier free stalls be added at this time to Traffic By-law 80-138, Schedule "T", "Metered Handicapped Parking".

PURPOSE & BACKGROUND

2. On November 4, 2013, City Council adopted Motion 13-A-134 regarding investigation of parking prohibition on Dock Road which states:

"That staff in the Engineering Department investigate the feasibility of implementing a wheelchair accessible parking space on Dock Road at Kempenfelt Bay in the vicinity of the dock and report back to general committee".
3. Dock Road is a two (2) lane minor collector roadway with a daily traffic volume of 1,500 vehicles per day, a rural cross section with no sidewalks and a pavement width of eight (8.0) metres. Please refer to Appendix "A".
4. Currently parking is prohibited on both sides of Dock Road from Turner Drive to the east limits. The parking restrictions were implemented to improve the operation and safety of Dock Road by removing parking congestion at the dead end as the roadway does not provide a turnaround at the eastern limits.
5. Overnight on-street parking is prohibited from December 1st to March 31st, between 12:01 a.m. and 7:00 a.m. for the purpose of snow clearing.

ANALYSIS

6. The purpose of this Staff Report is to address the feasibility of providing a barrier free parking space near the public dock at the end of Dock Road. However, on-street parking is currently prohibited anytime on Dock Road from Turner Drive to the eastern limit. The current parking regulations were implemented to address operational and safety concerns along Dock Road caused by parking congestion at the dead end which would not permit any location to be used for on-street barrier free parking.

7. Parks Planning and Development staff were consulted regarding the future Dock Road Park to be constructed on the south east corner of the intersection of Dock Road and Plunkett Court. The park will provide 26 parking stalls and two (2) barrier free parking stalls. The proposed parking stalls will provide additional parking for patrons wishing to access the public dock but has not been identified within the 2014 Capital Plan. Please refer to Appendix "B" for the concept plan of the proposed park.
8. The implementation of an on-street barrier free stall at the eastern end of Dock Road is not recommended as there are no sidewalks to provide a safe pathway from the parking stall to the public dock. The urbanization, including sidewalks of Dock Road has not been identified within the 2014 Capital Plan.
9. When Dock Road becomes urbanized a sidewalk will be provided to connect the public dock with the parking lot of Dock Road Park. Until then people who require barrier free parking could park their vehicle on Plunkett Court to access the public dock.
10. Staff recommend that no additional barrier free stalls be added at this time to the eastern end of Dock Road. Barrier free stalls will be accommodated within Dock Road Park and when the urbanization of Dock Road is complete a sidewalk will connect the public dock with the parking lot.
11. Barrie Police Service, Barrie Fire and Emergency Service, The Accessibility Coordinator and Municipal Law Enforcement do not oppose the recommended motion.

ENVIRONMENTAL MATTERS

12. There are no environmental matters related to the recommendation.

ALTERNATIVES

13. The following alternative is available for consideration by General Committee:

Alternative #1

General Committee could decide to implement a barrier free stall on Dock Road.

This alternative is not recommended as on-street parking is currently prohibited anytime on both sides of Dock Road from Turner Drive to the eastern limit which would not accommodate on-street barrier free stall and not provide an accessible path to the public dock.

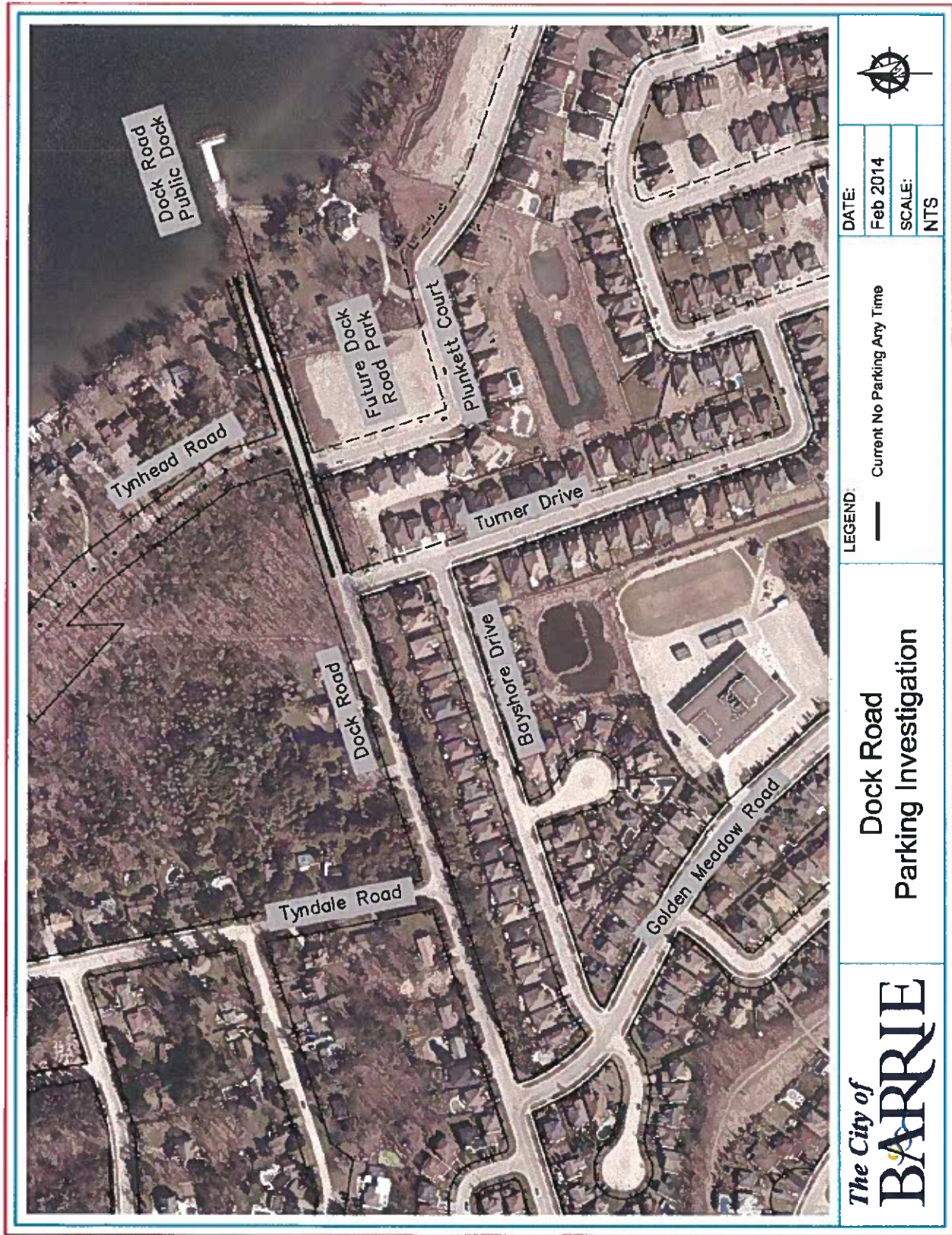
FINANCIAL

14. There are no costs associated with the recommended motion.

LINKAGE TO COUNCIL STRATEGIC PRIORITIES

15. The recommendations included in this Staff Report are not specifically related to the goals identified in the 2010-2014 City Council Strategic Plan.

Appendix "A"



	
DATE:	Feb 2014
SCALE:	NTS
LEGEND:	— Current No Parking Any Time
<p>Dock Road Parking Investigation</p>	
	

Appendix "B"

