



Bill No. 002

BY-LAW NUMBER 2015-

A By-law of The Corporation of the City of Barrie to amend By-law 2009-141, a land use control by-law to regulate the use of land, and the erection, use, bulk, height, location and spacing of buildings and structures in the City of Barrie.

WHEREAS the Council of The Corporation of the City of Barrie deems it expedient to amend By-law 2009-141 to rezone Part of the North Half of Lot 3, Concession 11, formerly Township of Innisfil, now City of Barrie, County of Simcoe, designated as Part 1 on Plan 51R-31487 municipally known as 371 Mapleview Drive West, Barrie from General Commercial (C4) (SP-307) (H-70) to General Commercial (C4) (SP-307);

AND WHEREAS the Council of The Corporation of the City of Barrie pursuant to By-Law 99-312 authorizes removal of the Holding Provision;

AND WHEREAS all conditions dealing with the Holding Zone with respect to the property zoned General Commercial (C4) (SP-307) (H-70) being:

- (i) The execution of a site plan agreement for the subject lands pursuant to Section 41 of the *Planning Act*, R.S.O. 1990, c.P.13 or any successor thereto;

have been satisfied.

NOW THEREFORE the Council of The Corporation of the City of Barrie enacts the following:

1. **THAT** the zoning map be and the same is hereby amended in accordance with the zoning map attached hereto and forming part thereof which deletes reference to (H) in the Part of the North Half of Lot 3, Concession 11, formerly Township of Innisfil, now City of Barrie, County of Simcoe, designated as Part 1 on Plan 51R-31487 municipally known as 371 Mapleview Drive West, Barrie.
2. **THAT** this By-law shall come into force and effect immediately upon the final passing thereof.

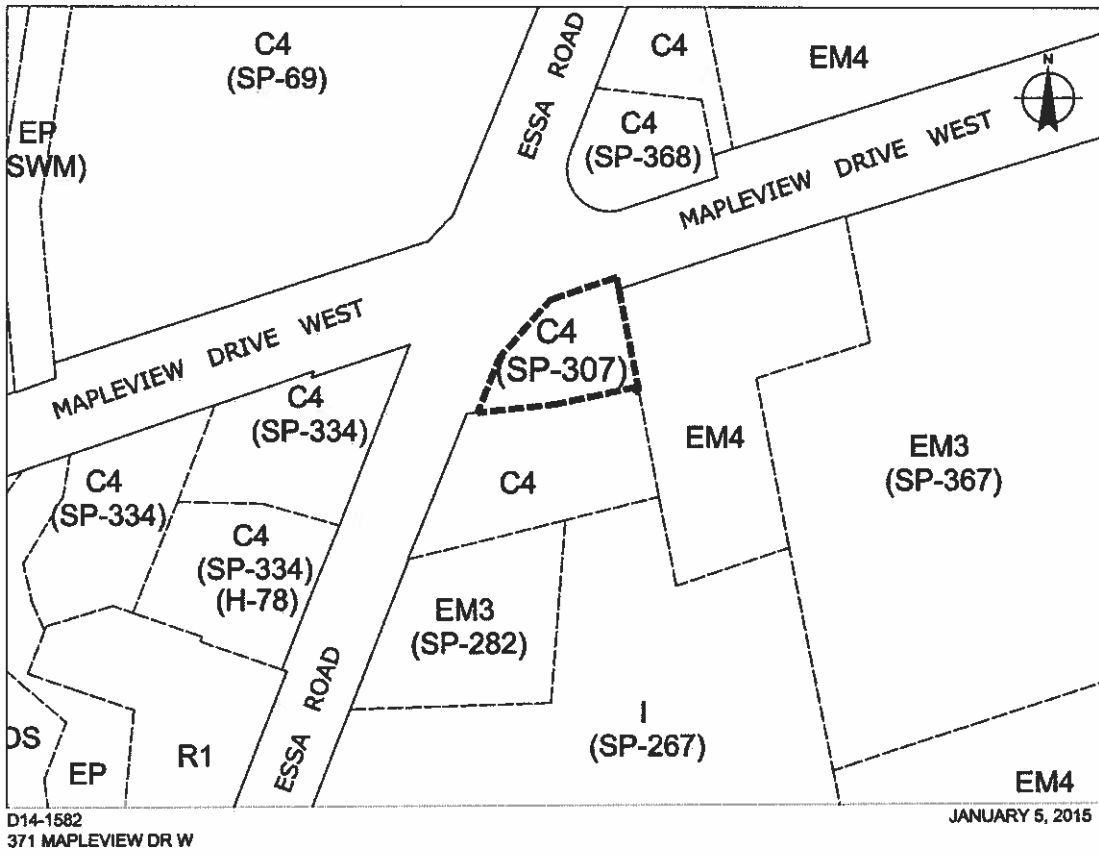
READ a first and second time this 2nd day of February, 2015.

READ a third time and finally passed this 2nd day of February, 2015.

THE CORPORATION OF THE CITY OF BARRIE

MAYOR – J.R. LEHMAN

CITY CLERK – DAWN A. MCALPINE



Schedule "A" to attached By-law 2015-

Mayor – J.R. Lehman

City Clerk – Dawn A. McAlpine