



1091369 ONTARIO LTD.

CITY OF BARRIE

Planning Applications Submitted Include:

- **Draft Plan of Subdivision**
- **Zoning By-Law Amendment**

Supporting Studies Submitted Include :

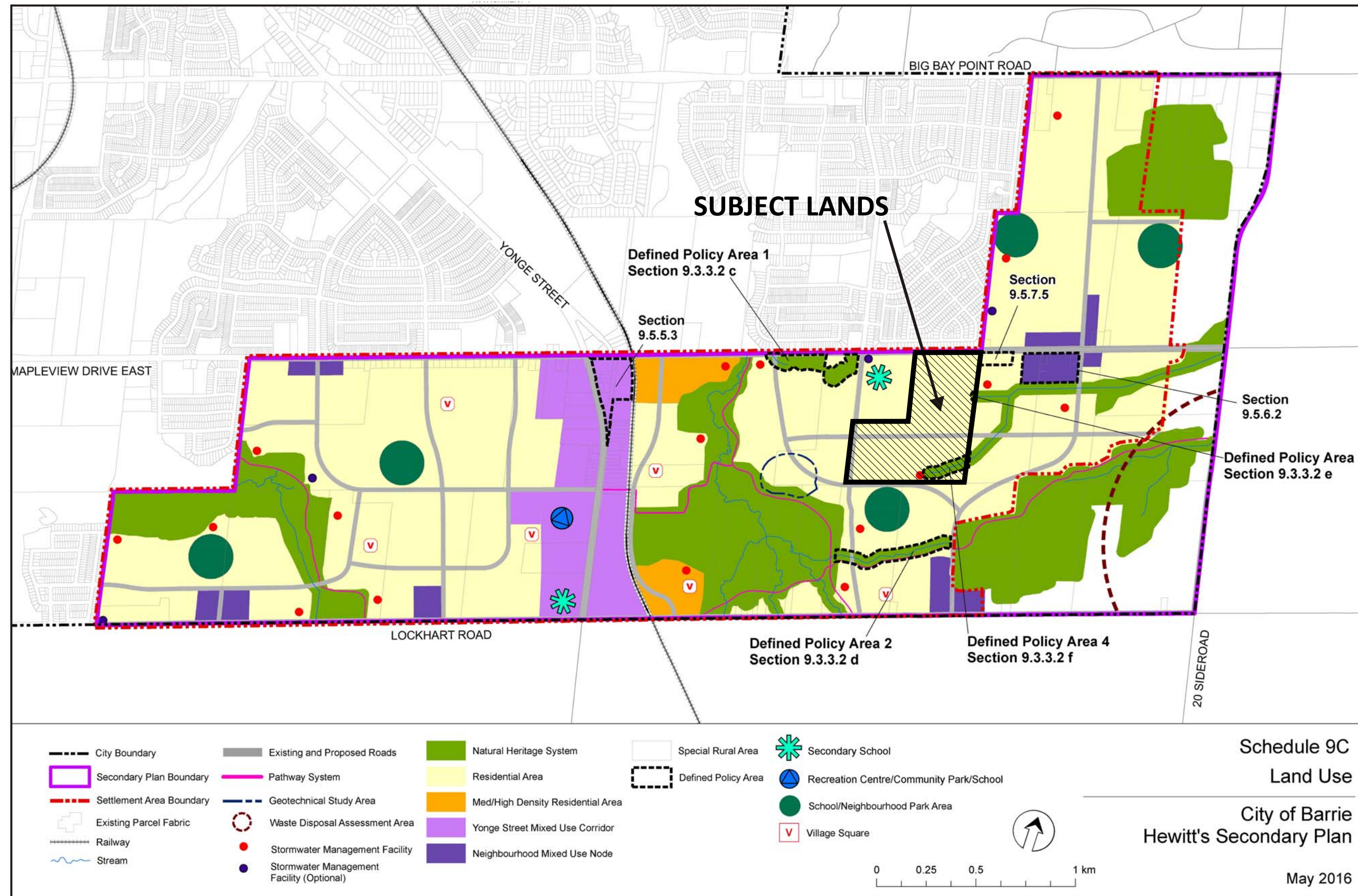
- **Noise Study - R. Bouwmeester & Associates**
- **Functional Servicing Report - Schaeffer & Associates Ltd.**
- **Storm Water Management Report - Schaeffer & Associates Ltd.**
- **Traffic Impact Study - LEA Consulting Ltd.**
- **Species at Risk - Azimuth Environmental Consulting Inc.**
- **Archeological Assessment - This Land Archeology Inc.**
- **Environmental Site Assessment - Terraprobe Inc.**
- **Pedestrian Circulation Plan - KLM Planning Partners Inc.**
- **Planning Justification Outline - KLM Planning Partners Inc.**



SITE LOCATION



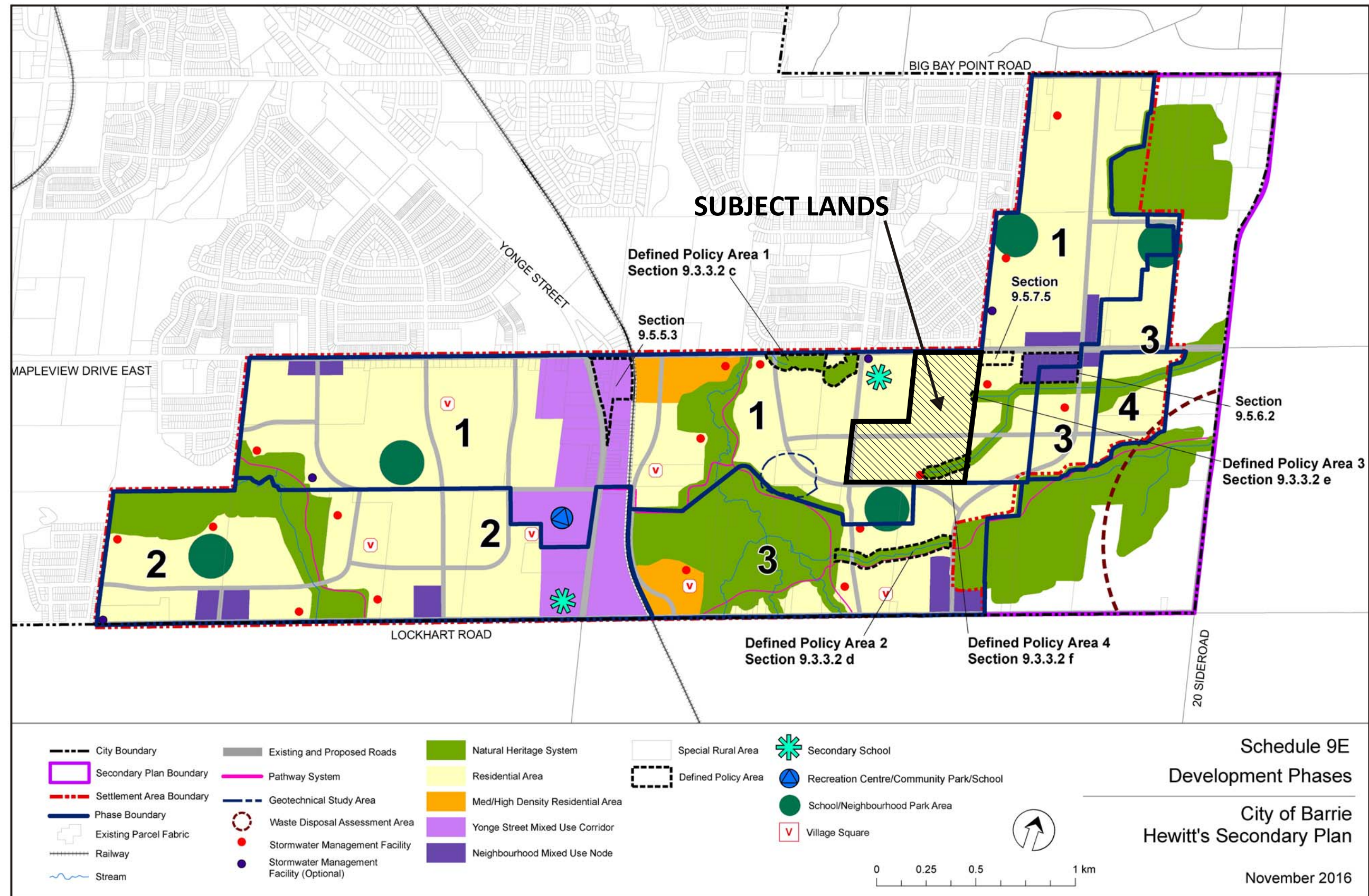
HEWITT'S SECONDARY PLAN - LAND USE SCHEDULE



 SUBJECT LANDS



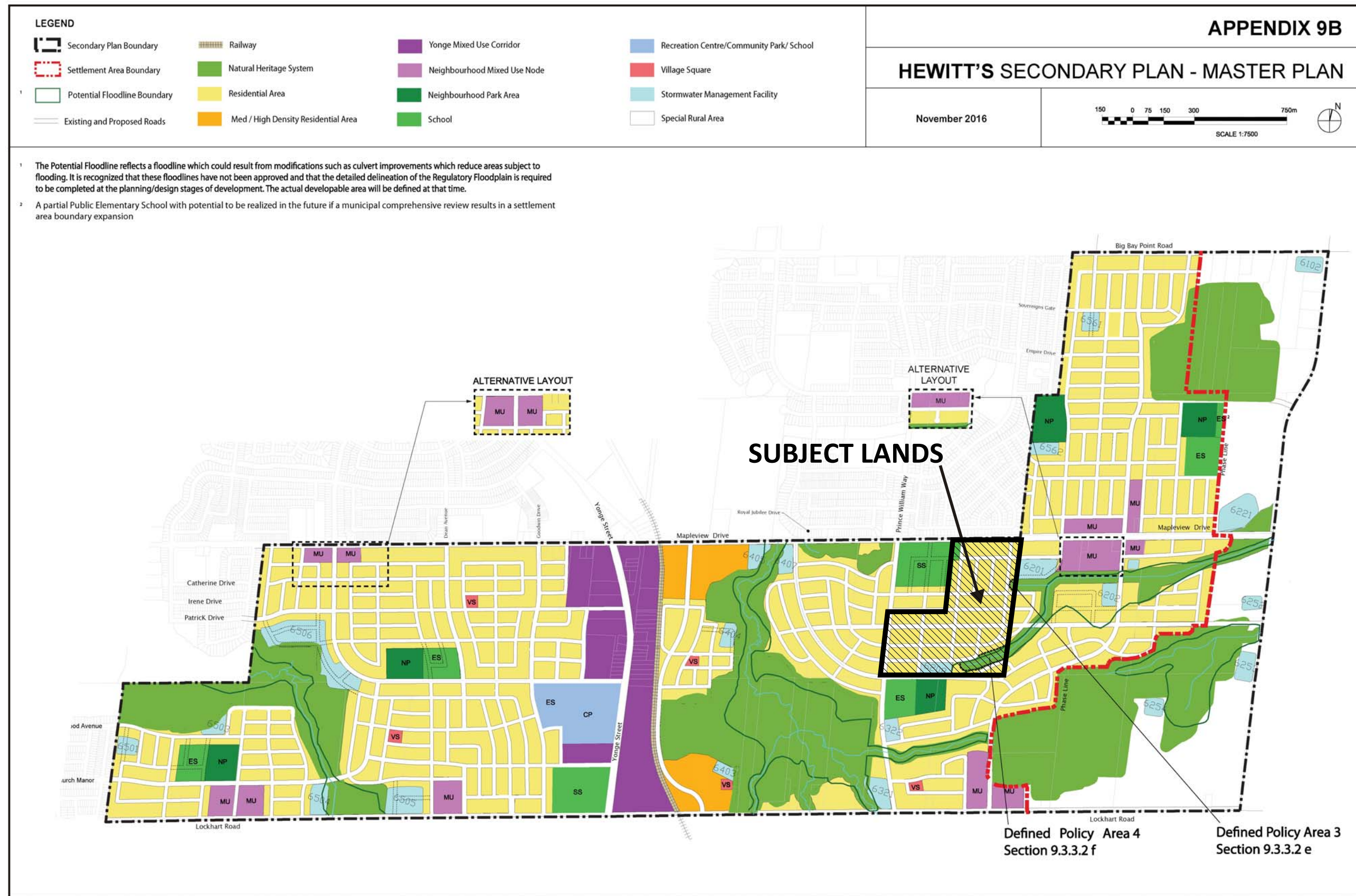
HEWITT'S SECONDARY PLAN - DEVELOPMENT PHASES



SUBJECT LANDS



HEWITT'S SECONDARY PLAN - MASTER PLAN



SUBJECT LANDS



DRAFT PLAN OF SUBDIVISION

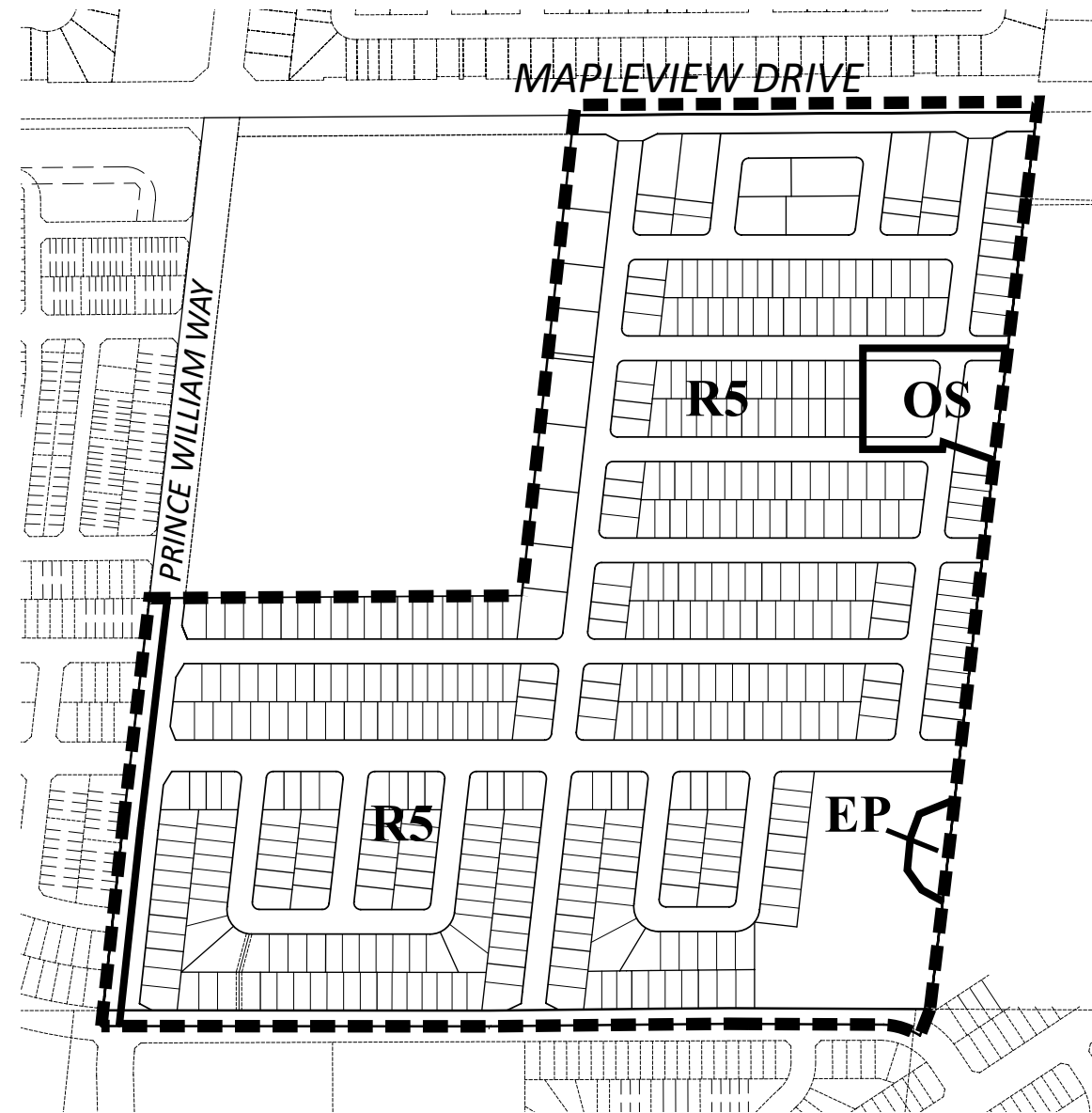


	13.7m SINGLE DETACHED	138 UNITS
	12.2m SINGLE DETACHED	121 UNITS
	11.0m SINGLE DETACHED	189 UNITS
	7.5m TOWNHOUSES	92 UNITS

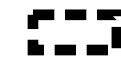

TOTAL = 540 UNITS
DENSITY = 22 U.P.H.



PROPOSED ZONING SCHEDULE



SCHEDULE 'A' TO ATTACHED BY-LAW 2017-____

 Subject Lands  Zone Boundaries

R5 - Neighbourhood Residential Zone

EP - Environmental Protection

OS - Open Space

MAYOR

CITY CLERK





THANK YOU