

Stephen Naylor, Director of Planning  
City of Barrie  
70 Collier Street, Box 400  
Barrie, ON L4M 4TS

September 14, 2015

Re: South Barrie Secondary School Site Plan Application (D11-1691)

Dear Mr. Naylor,

At the meeting held on Friday September 11, 2015 in which Councillor McCann, Trustee Cameron, City of Barrie staff, Simcoe County District School Board (SCDSB) staff, and the planning representative for the landowner's group were present, the concept of a more prominent streetscape for the school property at the intersection of Mapleview Drive and Prince William Way was discussed.

The purpose of this letter is to reiterate the commitment of Board staff to work with the City of Barrie to develop a feature which emphasizes the prominence of the location and reflects the vision of the City of Barrie for this newly developing area. We hope Council will approve Alternative #1 and we suggest an additional condition to site plan approval with respect to including a significant architectural feature at the corner. This would allow the school board to move forward with constructing the school while details of this design element are refined.

Following our productive and collaborative meeting, staff have researched a number of place-making features for the intersection of Prince William Way and Mapleview Drive. The school board is focusing on pergola-type and renewable energy installations in addition to street furniture and landscaped areas to enhance the streetscape; however, we are open to design suggestions from staff and Council. Photos and renderings illustrating the nature of the proposed features are enclosed.

We believe a pergola-type architectural feature at the intersection (set back from the sight triangle) will provide the vertical element desired by city staff and the development group. This feature creates a distinct presence and entrance to the school property while enhancing the public realm at the southeast corner of the intersection. As suggested by city staff, the score board for the natural turf athletic field is designed as a signage feature for the school and provides an additional vertical element.

The school board is committed to energy efficiency and as such, has proposed a number of innovative and attractive wind turbines to generate power for on-site dark sky compliant illumination. The school board has been an early adopter of renewable energy resources and we have successfully tied the performance of these features to the curriculum at our schools

including the LEED Gold school in Midland, the wind turbine in Elmvale, and the solar panels on 21 school rooftops throughout the county. Providing the educational connection between renewable energy, water conservation, and our personal consumption helps our students and the public become better stewards of the environment.

The board will soon strike a naming committee and the approved name will establish the overall theme for the school. Following this, a community advisory group may be formed to further refine the details of any proposed place-making features with the aiming of reflecting the theme of the school and the vision of the community.

We hope the foregoing illustrates our commitment to designing a place-making feature which meets the vision of the City of Barrie while meeting the school board's educational objectives.

Sincerely,

A handwritten signature in black ink, appearing to read 'John Dance', with a stylized flourish at the end.

John Dance  
Superintendent of Facility Services

cc Councillor McCann  
Trustee Cameron

## STREET PRESENCE ELEMENTS – CORNER PERGOLA



Example of pergola type feature, Toronto



## STREET PRESENCE ELEMENTS – CORNER PERGOLA



## STREET PRESENCE ELEMENTS – CORNER PERGOLA



Example of solar panel installation on pergola type feature

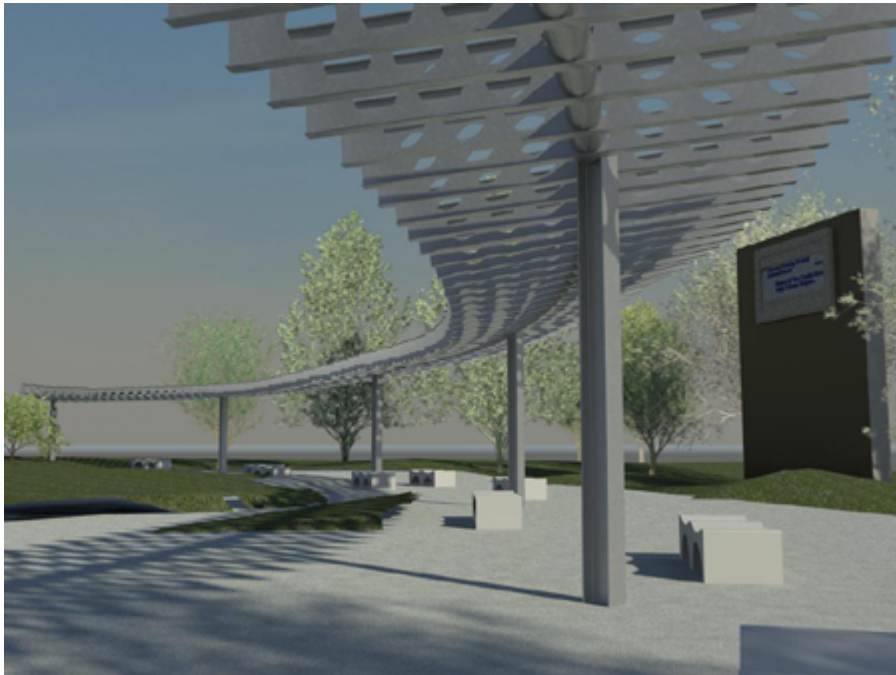


## STREET PRESENCE ELEMENTS – CORNER PERGOLA

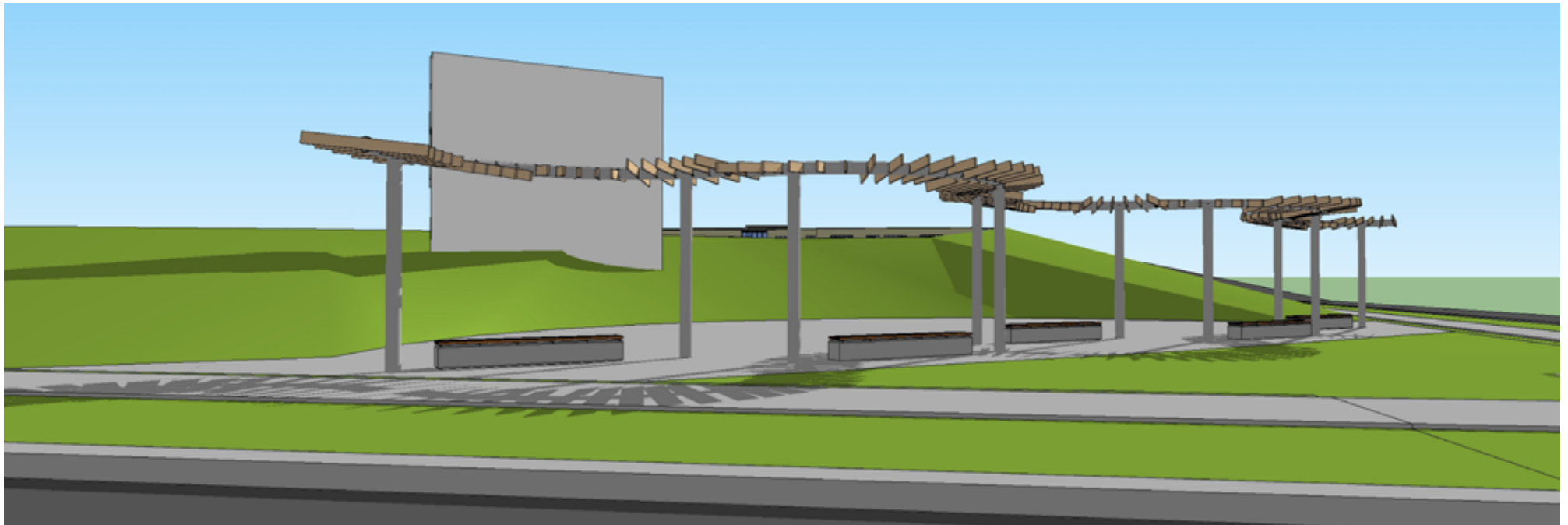
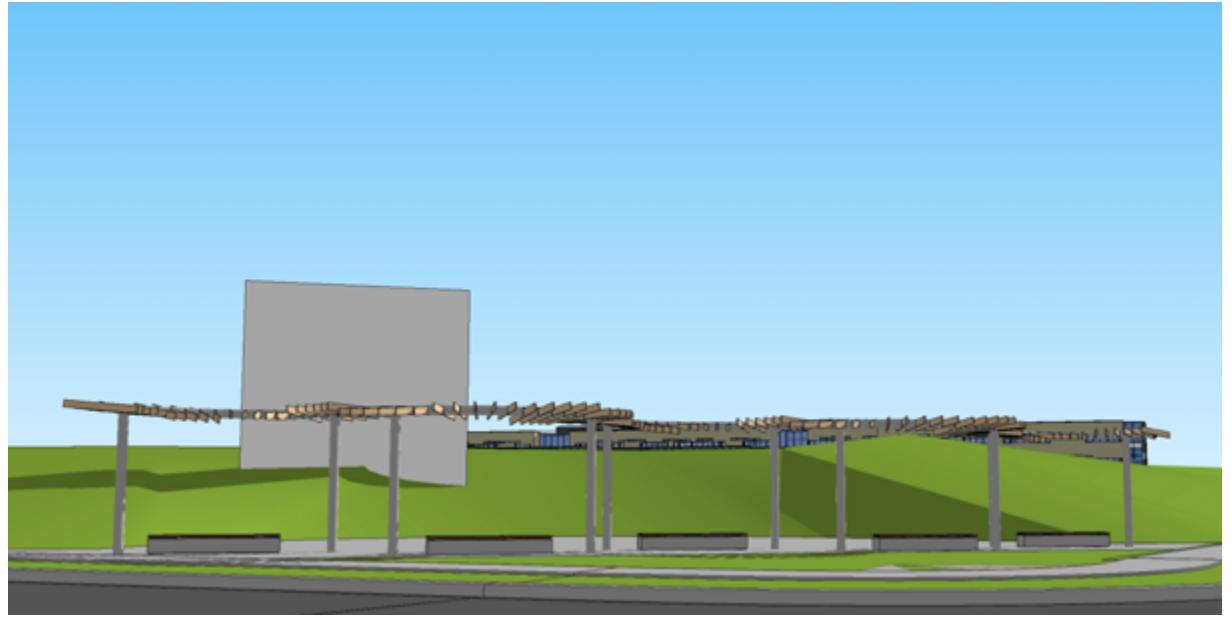
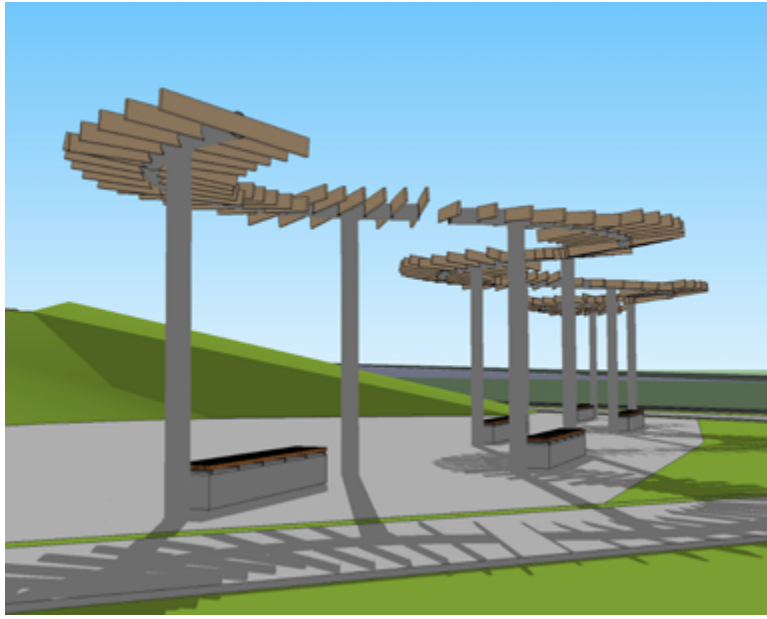
Example of pergola type feature with seating



# RENDERING OF PERGOLA-TYPE FEATURE



# TRELLIS FEATURE





## STREET PRESENCE ELEMENTS – STREET LIGHTS (LID)



Example of wind turbine feature



Example of a wind turbine and solar energy installation for street lighting

