



WATERSAND CONSTRUCTION LTD.

CITY OF BARRIE



MARCH 20, 2017

Planning Applications Submitted Include:

- Draft Plan of Subdivision
- Zoning By-Law Amendment

Supporting Studies Submitted Include:

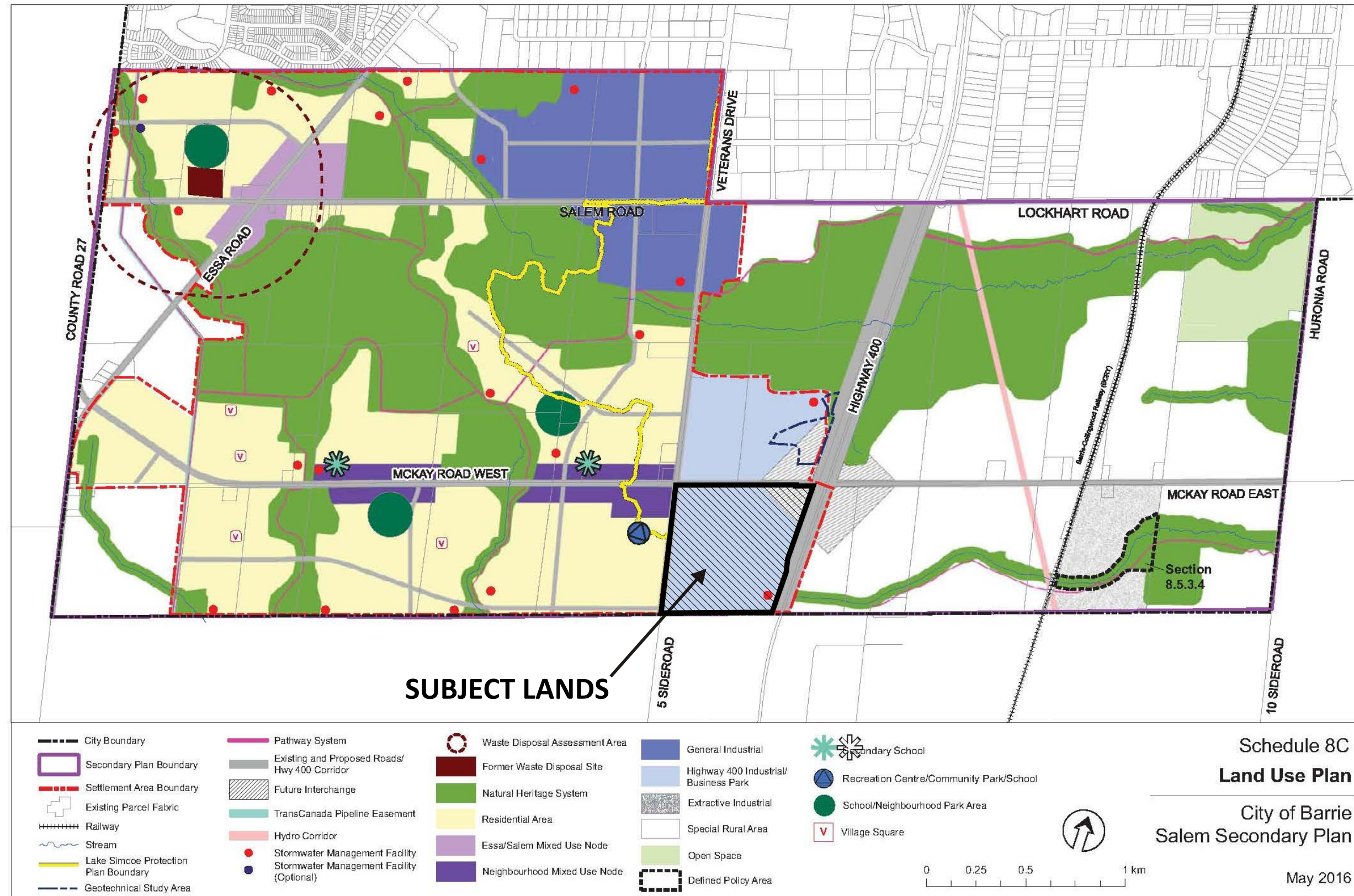
- Functional Servicing Report - Schaeffer & Associates Ltd.
- Storm Water Management Report - Schaeffer & Associates Ltd.
- Planning Justification Outline - KLM Planning Partners Inc.



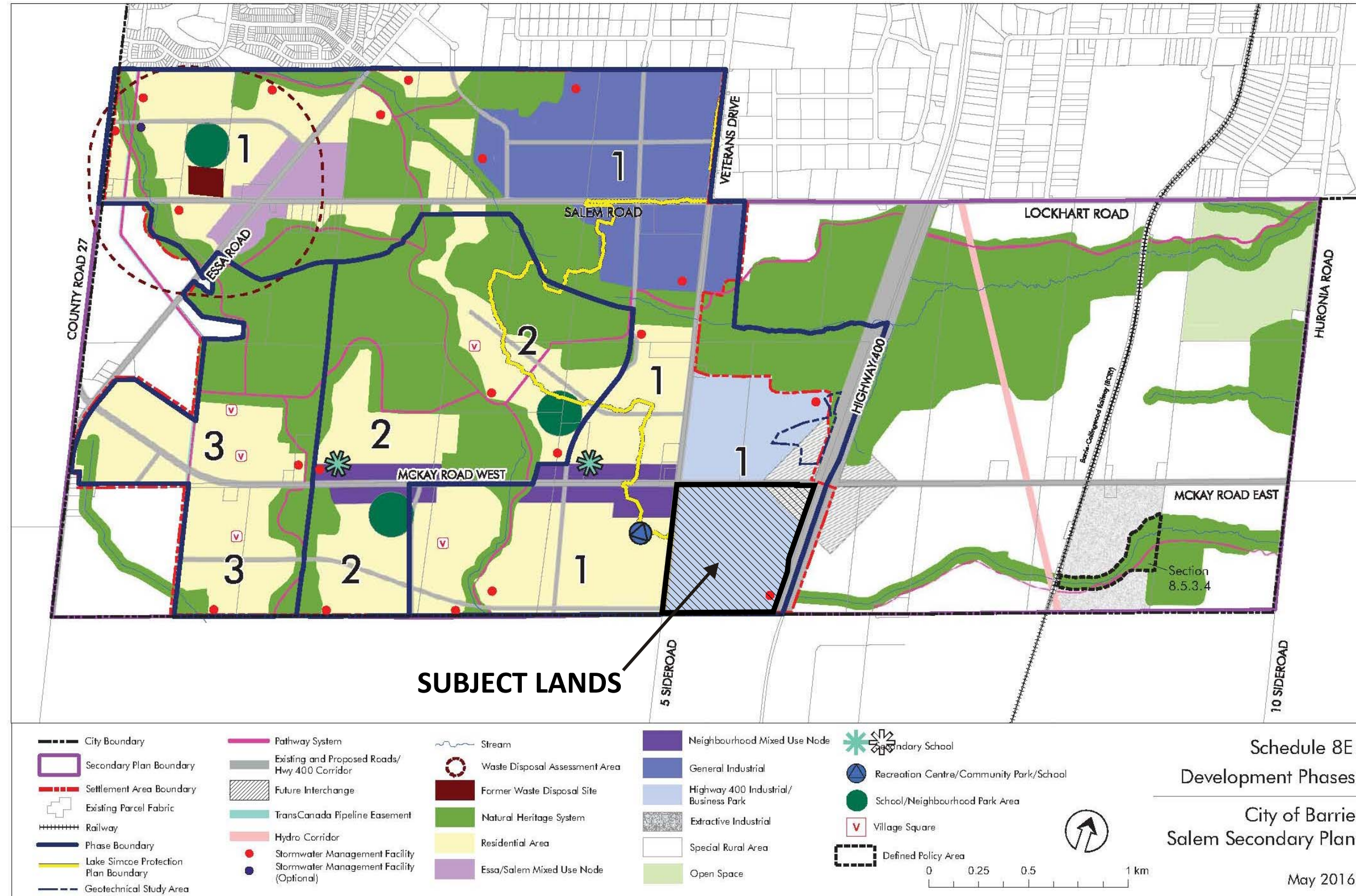
SITE LOCATION



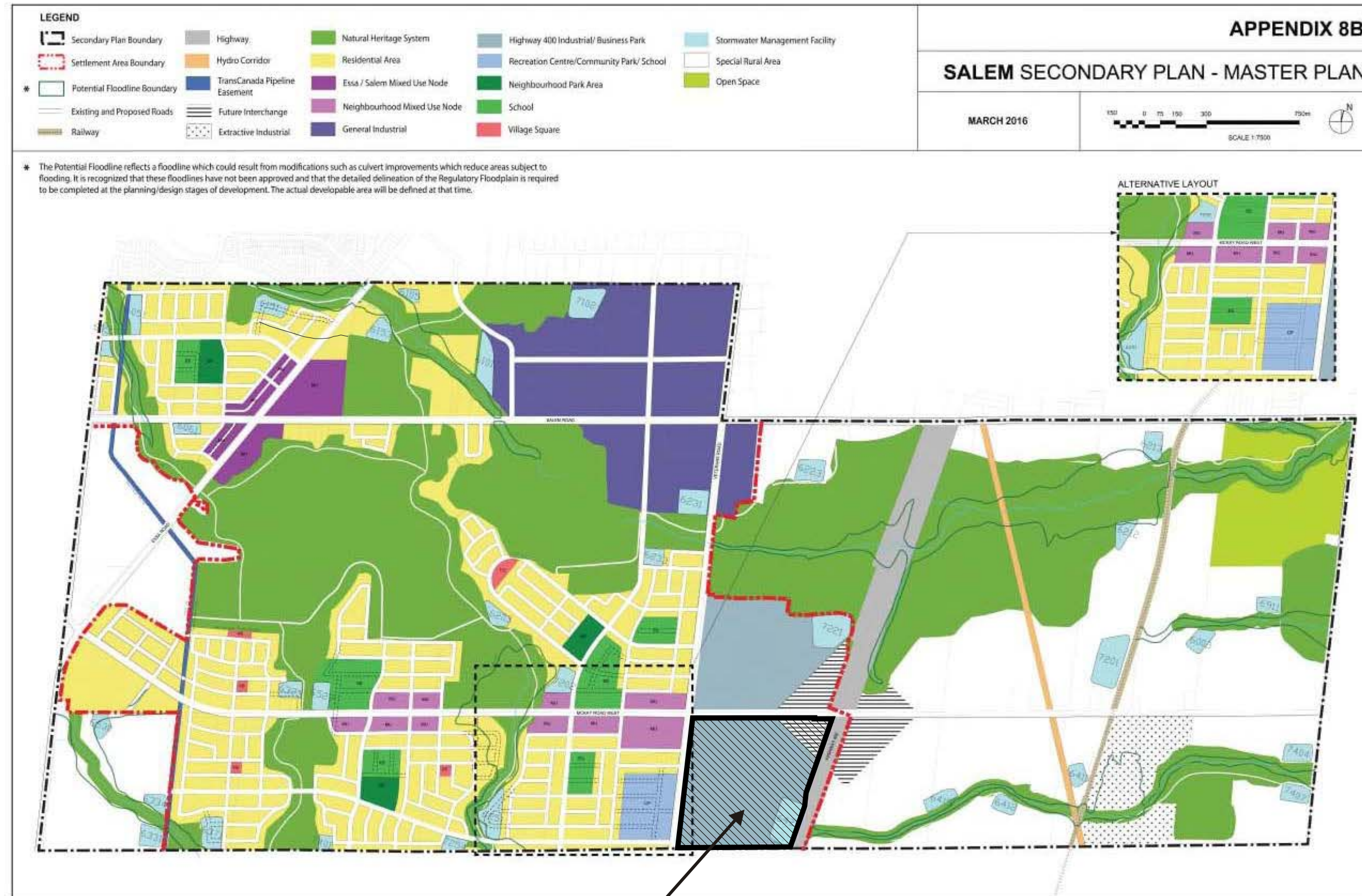
SALEM SECONDARY PLAN - LAND USE PLAN



SALEM SECONDARY PLAN - DEVELOPMENT PHASES



SALEM SECONDARY PLAN - MASTER PLAN



SUBJECT LANDS

SUBJECT LANDS

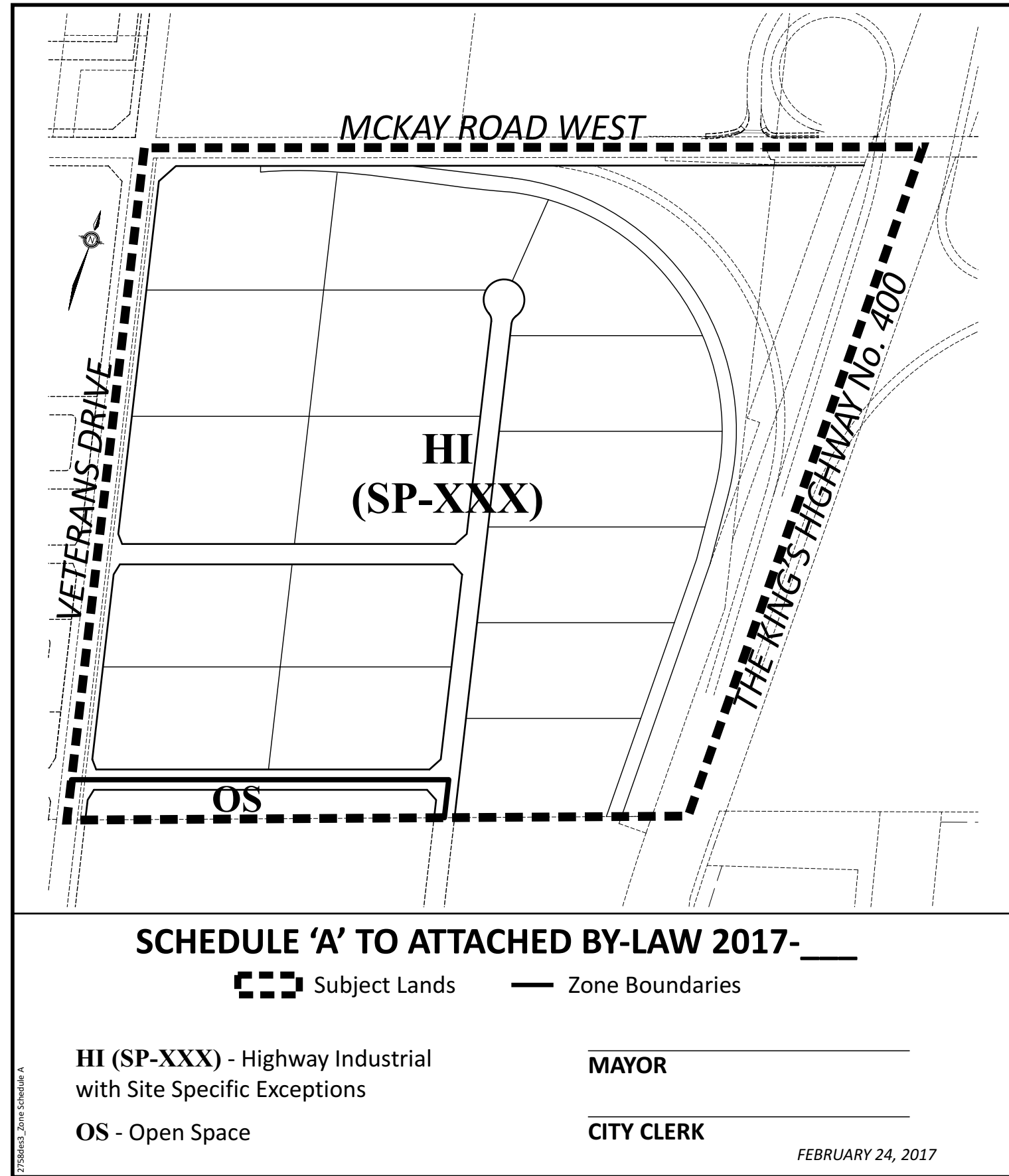
DG GROUP™

KLM
PLANNING PARTNERS INC.

DRAFT PLAN OF SUBDIVISION



PROPOSED ZONING SCHEDULE





THANK YOU



MARCH 20, 2017