

# Report to Community Services Committee

---

**TO:** COMMUNITY SERVICES COMMITTEE

**PREPARED BY AND KEY CONTACT:** K. RANKIN, M.Sc.F., R.P.F.  
URBAN FORESTER (EXT. 4754)

**SUBMITTED BY:** R. W. MCARTHUR, P. Eng.  
DIRECTOR OF ENGINEERING

**GENERAL MANAGER APPROVAL:** R. J. FORWARD, MBA, M.Sc., P. Eng.  
GENERAL MANAGER OF INFRASTRUCTURE, DEVELOPMENT & CULTURE

**CHIEF ADMINISTRATIVE OFFICER APPROVAL:** JON M. BABULIC  
CHIEF ADMINISTRATIVE OFFICER

**DATE:** September 7, 2011

**SUBJECT:** NORTH SHORE TRAIL VEGETATION MANAGEMENT PLAN REVIEW

---

## RECOMMENDED MOTION

1. That the North Shore Trail Vegetation Management Plan be updated as detailed in Appendices "A" and "B" of the staff report to Community Services Committee entitled "North Shore Trail Vegetation Management Plan Review" dated September 7, 2011.

## PURPOSE & BACKGROUND

2. The North Shore Trail is a continuous four metre wide limestone path constructed on the original rail bed extending from the foot of Mulcaster Street to the eastern City limit at Penetanguishene Road. The trail is the northern extension of Barrie's existing waterfront trail system and is classified as one of four main trail systems through the City. The North Shore Trail Vegetation Management Plan is utilized by staff in the implementation of vegetation maintenance work along the trail system, including views from the trail.
3. On February 23, 2009, Council approved the Vegetation Management Plan for the North Shore Trail (see Figures 2A, 2B and 2C, Appendix "C" for details). The plan includes the following approved maintenance activities:
  - i) General maintenance of the trail corridor, including the removal of all trees, branches and/or shrubs within 1 metre horizontally and 2.5 metres vertically from the trail surface;
  - ii) Removal of dead, diseased or hazardous trees from the vicinity of the trail;
  - iii) Removal of all non-native, invasive vegetation from the trail corridor and replanting with native plants;
  - iv) Consideration of the use of a direct application (drilling and/or injection mechanisms) of an approved forestry herbicide to treat stumps which are continuing to aggressively coppice (suckering); and
  - v) Maintenance of the trail and existing viewpoints as identified within the North Shore Trail Master Plan (Final Concept: Multi-Use Trail, May 2002) and the Vegetation Management Categories detailed in Staff Report ENG 004-09.

# Report to Community Services Committee

---

4. Guiding principles from the North Shore Trail Master Plan that were used in the development of the Vegetation Management Plan include:
  - i) Provide a balanced approach to naturalization and beautification (i.e. planting and plant removal).
  - ii) Maintain uniqueness of North Shore due to diversified waterfront topography, native vegetation and adjacent land uses.
  - iii) Create visual interest, viewsheds and visibility.
  - iv) Maintain and enhance the natural quality of the waterfront (Barrie Official Plan).
  - v) Protect and enhance existing tree and shrub cover through naturalization and infill planting (Waterfront Master Plan).
  - vi) Use native plant materials wherever possible (City naturalization strategy).
  
5. The purpose of this staff report is to address Council adopted Motion 10-G-365 which states the following:
  1. That staff in the Engineering Department work with residents who have adopted the North Shore Trail through the adopt-a-trail program to investigate:
    - a. Partnership opportunities;
    - b. Vegetation management programs including planting opportunities;
    - c. Safety concerns;
    - d. Access from Kempenfelt Drive to the North Shore Trail;
    - e. Undertake a public consultation process which includes but is not limited to consultation with residents in the neighbourhood of the North Shore Trail, to re-examine the existing North Shore Trail Vegetation Management Plan to determine whether the plan adequately focuses on safety, access and the general enjoyment of the trail and waterfront as a priority, while balancing the natural elements of the water, the trees, the wildlife and protecting the environment;
    - f. Investigate opportunities for funding partnerships for the North Shore Trail; and; and report back to the Community Services Committee concerning any recommendations related to changes to the vegetative plan.
  
  2. That staff provide an update regarding the North Shore Master Plan progress to the residents who have adopted the North Shore Trail.
  
6. Key activities that have occurred since Council adopted Motion 10-G-365 on September 20, 2010, include:

**November 2010:** Implementation of fall maintenance activities within Phase 2 of the Vegetation Management Plan (\$15,000). Planned general maintenance with a focus on:

  - a. Removal of new sucker growth from stems of trees and shrubs (second treatment to reduce future suckering).
  - b. Thinning of multiple stem (clump) trees as well as removal of lower two metres of branching on trees growing on the slope between Kempenfelt Drive and the North Shore Trail.
  - c. Removal of four dead American elm trees.

# Report to Community Services Committee

---

- February 10, 2011:** Meeting with the North Shore Trail “Adopt-a-Park” group to discuss Council adopted Motion 10-G-365 (September 20, 2010) Item 1 (a, c, d, f) and Item 2.
- March 4, 2011:** Meeting with the Barrie Police Community Safety Officer to discuss issues on the trail and strategies to increase safety. The Barrie Police have scheduled new patrols on the trail and identified ideas and locations where enhanced vegetation management would benefit community safety.
- March 9, 2011:** Public Information Centre (PIC) as part of the process to address Council adopted Motion 10-G-365 (September 20, 2010) Items 1 (b) and (e).
- April 12, 2011:** Follow-up meeting with the North Shore Trail “Adopt-a-Park” group and representatives from the Brereton Field Naturalists Club regarding Council adopted Motion 10-G-365 and discuss the results of the PIC of March 9, 2011.
- June 7, 2011:** At the request of the “Adopt-a-Park” group, staff scheduled a site walk to discuss the issue of safety and views as related to the Vegetation Management Plan after full leaf-out in early summer. This meeting involved a walk of the trail to examine areas where the group had site specific safety concerns, as well as discuss suggested improvements to the current maintenance regime.

7. “Phase 1” implementation of vegetation management on the North Shore Trail was completed in 2007 as a test pilot project. After the 2009 approval of the Vegetation Management Plan (VMP), Phase 2 was implemented in 2010. Implementation of Phase 3 of the VMP is planned to commence on August 10, 2011. Maintenance activities described in Paragraph 3 (above) are planned for the balance of the North Shore Trail including the Phase 3 area (east of Vancouver Street). The annual Operating Budget for vegetation maintenance has been \$33,500 since 2010.
8. Staff in the Engineering Department have been working on the North Shore Trail Slope Stabilization and Shoreline Rehabilitation project as described in the memorandum to General Committee on June 27, 2011. These areas will be restored to a natural shoreline and replanted with native vegetation following the principles outlined in Paragraph 4.

## ANALYSIS

9. As per Council adopted Motion 10-G-365, staff have investigated the following items:
  - a. Partnership opportunities: The local residents have created an “Adopt-a-Park” group to assist in facilitating partnerships with the city for a variety of initiatives including, but not limited to, volunteer naturalization planting activities, “Adopt-a-Bed” areas and “Neighbourhood Watch” group.
  - b. Vegetation Management programs including planting opportunities: Including the above noted volunteer planting and “Adopt-a-Bed” partnerships, staff have reviewed the current Vegetation Management Plan in consultation with the “Adopt-a-Park” group, as detailed within this report.
  - c. Safety concerns: In the past, Barrie Police had two bicycle patrol units that travelled the North Shore Trail and were primarily responsible for patrolling the area on a regular basis. They have indicated that the trail is not documented as having a crime rate different from the

# Report to Community Services Committee

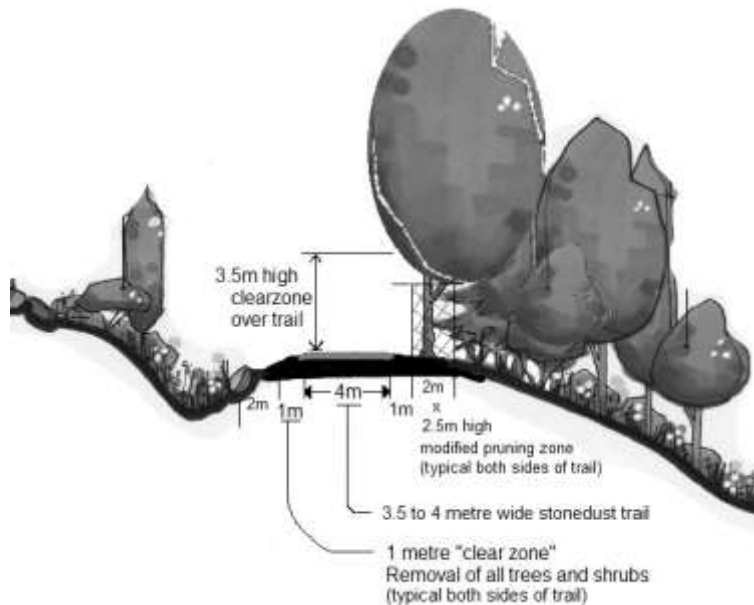
---

surrounding community. Staff reviewed the trail safety concerns with the Barrie Police who have added vehicle patrols in addition to the bicycle patrols to increase the presence of police officers. Staff also met with representatives of the local trail users on-site to discuss and develop enhancements to the current vegetation management activities intended to improve safety on the trail.

- d. Access from Kempenfelt Drive to the North Shore Trail: On February 10, 2011, staff met with the "Adopt-a-Park" group to present the current plans for enhanced access points between Kempenfelt Drive to the North Shore Trail. Several access points, including ramps and stairs, are planned for construction in 2011.
  - e. Undertake a public consultation process which includes but is not limited to consultation with residents in the neighbourhood of the North Shore Trail to re-examine the existing North Shore Trail Vegetation Management Plan to determine whether the plan adequately focuses on safety, access and the general enjoyment of the trail and waterfront as a priority, while balancing the natural elements of the water, the trees, the wildlife and the protection of the environment: Staff have worked with the public and the local "Adopt-a-Park" group to recommend enhancements to the NST Vegetation Management Plan. This staff report details proposed changes to the plan.
  - f. Investigate opportunities for funding partnerships for the North Shore Trail: Staff will continue to work with the "Adopt-a-Park" group as well as other interested community groups to facilitate opportunities for funding and volunteer partnerships for the North Shore Trail.
10. The results of the Public Information Centre and associated public input, questionnaire responses and written correspondence provided varied opportunities to improve the Vegetation Management Plan (see Appendix "D" for details). Responses were received from 41 residents of which 31 lived directly adjacent to the trail. Responses can be summarized by the following:
- a. Respondents were generally satisfied with the main components of the Vegetation Management Plan although overall satisfaction with the provision of views of the bay from the trail and neighbouring properties was low.
  - b. 51% of respondents to the public consultation process were interested in the "Adopt-a-Bed" program to be involved in planting and maintaining beds of low growing shrubs and/or perennials in various areas along the North Shore Trail (on the north side of the trail).
  - c. In general, respondents to the questionnaire preferred trail sections which contained large, mature trees with frequent open or filtered views of the water.
  - d. Respondents preferred a mix and variety of trail experiences, from natural, heavily treed areas to open clear views of the bay.
  - e. Opinions on the selective removal of vegetation to enhance views was high (63% approved). However, respondents who were opposed to these activities tripled to 24% from the 2004 survey.
  - f. The Phase 1 area (Kempenfelt Park to Vancouver Street) had the highest number of requests for thinning/pruning of the shoreline for enhanced views of the Bay.
  - g. Approximately half of the respondents wanted more views of the bay, but there are also a high percentage of respondents who wanted to maintain the natural character of the trail.
  - h. Concern for safety of trail users was common across a large percentage of respondents. "Dense" areas of vegetation were topics of concern, citing that "people could hide" in these locations.
  - i. Concern was raised that the "Adopt-a-Park" group may have undue influence on the public planning process.

# Report to Community Services Committee

11. The following Vegetation Management Plan enhancements are being proposed as a result of the public consultation process:
- The removal of all trees, branches and/or shrubs within 1 metre horizontally and a minimum 3.5 metres vertically from the trail surface, staff have proposed a modified pruning and thinning width of an additional 2 metres along the maintenance corridor where all small shrubs are removed or pruned to a height of less than 60 cm and branches are pruned from trees to a minimum height of 2.5 metres (see illustration below). This will increase the visibility around the trail into the surrounding natural areas to address the safety concerns that trail users cannot see into the adjacent natural vegetation.



- Increased filtered, maintained and natural views from the trail to the water are proposed to increase the enjoyment of trail users (see Figures 1A, 1B and 1C, Appendix "B" for details). These areas will have pruning to thin the lower canopy of trees and shrubs to allow filtered views through to the lake. In most cases, this change increases the maintenance category for the areas along the shoreline from "natural" to "low maintenance." It is anticipated that the pruning and thinning of natural areas i.e "low maintenance"), once established, will be easier to maintain than areas that are currently maintained in the "high maintenance" classification. In addition, this balances the social desires for the trails vegetation with the ecological benefits that the trees provide. Pruning (not topping or pollarding) and thinning of suppressed vegetation will promote an over-storey canopy with views through or under the vegetation while still protecting the natural integrity of the shoreline that many people enjoy.
- Staff have highlighted many areas on the North Shore Trail for the planting of native shrubs, perennials and wildflowers (see Figures 3A, 3B, and 3C, Appendix "E" for details). This could be completed by organizations and/or persons under a new "Adopt-a-Bed" program to be developed and detailed by City staff within the current "Adopt-a-Park and Trail" program and should be considered for inclusion within the 2012 Work Plan.

# Report to Community Services Committee

---

## ENVIRONMENTAL MATTERS

12. Planting and/or maintenance of vegetation and natural areas in the City of Barrie can be beneficial to the environment through the:
- a) Reduction in the heat island effect resulting in lower energy consumption in the summer;
  - b) Reduction in winter winds resulting in lower energy consumption in the winter;
  - c) Sequestering of greenhouse gases in trees;
  - d) Stabilization of slopes and natural areas;
  - e) Provision of wildlife habitat; and
  - f) Interception and absorption of rainfall and surface water flows, improving the water cycle.
13. Pruning and thinning of vegetation along the North Shore Trail can be beneficial to individual trees that are retained, improving their health and longevity, potentially adding to the overall environmental benefits as noted above. However, removal of smaller suppressed trees and shrubs and too much thinning of the natural shoreline can also have negative environmental impacts. With an increase in the amount of thinning and tree and shrub removals that occurs, more environmental impacts are expected through unstable slopes, increased erosion, negative effects on bird and wildlife habitat and a reduction in littoral zone shade resulting in an overall reduction in ecological benefits that trees provide (greenhouse gas sequestering, water cycle benefits, etc.).

## ALTERNATIVES

14. There are several alternatives available for consideration by General Committee, of which two are:

### Alternative #1

Community Services Committee could recommend maintaining the existing Vegetation Management Plan that was approved by Council in 2009 (i.e. Status Quo – No Change Scenario, shown in Figures 2A, 2B and 2C, Appendix “C”).

This alternative is not recommended as the existing Vegetation Management Plan has not been considered adequate by the local residents resulting in the request by Council to review the plan.

### Alternative #2

Community Services Committee could direct staff to develop additional alternative Vegetation Management options for the North Shore Trail which may include scenarios for:

- a. reducing vegetation maintenance below the 2009 approved levels, i.e. more natural;
- b. increasing vegetation maintenance above those proposed in this staff report, i.e. more urban;
- c. prohibiting any unnecessary tree removals; or
- d. protecting the shoreline areas with environmental protection fencing.

Although this alternative is available, the recommended vegetation management levels address the needs and concerns of the local residents regarding environmental, visual, safety and park programming elements.

# Report to Community Services Committee

---

## FINANCIAL

15. Based on the contracted North Shore Trail maintenance services in 2007 and 2010, the City of Barrie has spent annually an average of \$27,000 on vegetation management (trail, views, etc.) and \$5,000 on invasive species removal. Over time, the cost of invasive species removals has been reducing and will be negligible within five years of the implementation of the maintenance plan.
16. The total cost of implementing the North Shore Trail Vegetation Management Plan, Phases 1 and 2 (2007-2010) was \$56,500. Of this total, \$12,500 was for non-native invasive species removals and \$44,000 was for general maintenance of vegetation and views. This year, the anticipated cost of maintenance work scheduled for mid-August in Phase 3 will be \$33,500 from the minor capital operating budget including both general maintenance and non-native removals.
17. Based on proposed enhancements to the existing Vegetation Management Plan, staff estimate the increase in the level of service represents \$13,000 in staffing costs. Council approved the hiring of a new Forestry Journeyman in the Operations Department in 2011. As part of the Program Change Form, it was noted that this position would allow Forestry staff to dedicate additional resources, in part, to the maintenance of the North Shore Trail. Given that the capacity exists in the new Forestry Journeyman position to deliver the proposed service enhancements, there are no incremental operating impacts related to the proposed Plan. The current budget allocation of \$33,500 would continue to be required in 2012 to complete certain components of the annual maintenance program similar to the existing level of service.
18. To implement the proposed Vegetation Maintenance Plan, work will be phased in over a two year period, with the additional widening of the maintenance corridor in the first year, and pruning along the shoreline implemented in year two.

## LINKAGE TO 2010-2014 COUNCIL STRATEGIC PLAN

19. The recommendation(s) included in this staff report support the following goal identified in the 2010-2014 City Council Strategic Plan:
  - Improve and Expand Community Involvement and City Interactions
20. Recommendations within this staff report were developed through extensive public consultation (public information centre, resident and stakeholder meetings, "Adopt-a-Park" meetings). By increasing the opportunities for public input into the Vegetation Management Plan, staff have improved and enhanced communications with the public on this historically contentious area.

# Report to Community Services Committee

---

## APPENDIX "A"

### PROPOSED NORTH SHORE TRAIL VEGETATION MANAGEMENT PLAN

#### Description of Vegetation Management Plan Strategies:

- a) General maintenance of the trail corridor, including the removal of all trees, branches and/or shrubs within 1 metre horizontally and minimum 3.5 metres vertically from the trail surface;
- b) Modified pruning and thinning width of an additional 2 metres along the trail where all small shrubs are removed or pruned to a height of less than 60 cm and trees pruned to a height of 2.5 metres for under canopy visibility;
- c) Removal of dead, diseased or hazardous trees from the vicinity of the trail;
- d) Removal of all non-native, invasive vegetation from the trail corridor and replanting of native plants;
- e) Consideration of the use of a direct application (drilling and/or injection mechanisms) of an approved forestry herbicide to treat stumps which are continuing to aggressively coppice (suckering); and
- f) Maintenance of the trail and existing viewpoints as identified within the North Shore Trail Master Plan (Final Concept: Multi-Use Trail, May 2002) and the following Vegetation Management Categories.

#### Description of Vegetation Management Categories

The North Shore Trail will be maintained according to the approved Vegetation Management Plan. Areas are categorized into one of four maintenance regimes in each of three Phases, as described below, and illustrated within Figures 1A, 1B and 1C in Appendix "B".

##### Management Category 1 – Urban Park

Areas identified within the preferred management option as Category 1 will be maintained to the following standards:

- Density of trees and/or large shrubs per hectare equals approximately 20;
- Turf to be managed as a major waterfront park as defined in Management Category 1, of the Pesticide Use Policy;
- Removal of all non-native, invasive vegetation; and
- Dense planting of low-growing shrubs or installation of managed turf.





# Report to Community Services Committee

---

## Management Category 2 – High Maintenance Forested Areas

Areas identified within the preferred management option as Category 2 will be maintained to the following standards:

- Density of trees and/or shrubs maintained at approximately 400 stems per hectare;
- Removal of all non-native, invasive vegetation;
- Dense planting of low growing native shrubs; and
- Thinning/removal of small shrubs and trees to create, maintain or enhance views in a variety of options; major views, filtered views, maintained openings and/or natural views.



## Management Category 3 – Low (Selective) Maintenance Forested Areas

Areas identified within the preferred management option as Category 3 will be maintained to the following standards:

- Density of trees and/or shrubs maintained at approximately 2,500 stems per hectare;
- Removal of all non-native, invasive vegetation;
- Planting of low growing native shrubs where required; and
- Pruning, thinning or removal of small shrubs and trees to create, maintain or enhance views in a variety of options; filtered views, maintained openings and/or natural views.



# Report to Community Services Committee

---

## Management Category 4 – Naturally Maintained Forested Areas

Areas identified within the preferred management option as Category 4 will be maintained to the following standards:

- Removal of all non-native, invasive vegetation;
- Planting of low maintenance native species or native seeding where required;
- Pruning or removal of dead, diseased and/or hazardous trees and shrubs; and
- Pruning of trees and shrubs to provide minimum clearances from the trail surface for safe passage.



## Viewpoint Management Options

Four major types of views will be created and/or maintained along the North Shore Trail. These types of views are illustrated below, and are implemented as specified within Figures 1.A, 1.B and 1.C, in Appendix “B”, and within the appropriate maintenance categories. This will enhance views for the park/trail users by providing a variety of view types and configurations along the trail.

## Examples of Viewpoint Management Options:

Major Lookouts/Views:

- Maintained openings with a relatively clear line of sight from the park, viewpoint, or trail;
- Small trees and shrubs to be maintained to provide adequate viewing in these areas; and
- Dense planting of low growing native shrubs will be implemented to ensure erosion does not result, and to reduce the recolonization/competition from more invasive species of trees and shrubs.



# Report to Community Services Committee

---

## Filtered Views:

- Areas maintained by removal of densely growing saplings and shrubs to provide a “filtered” view of the lake;
- Clear lines of sight not present from all filtered maintenance areas, but maintenance of a reasonable level of lake view provided; and
- Some planting of low growing native shrubs where erosion or colonization by invasive vegetation may become an issue.



## Maintained Openings:

- Areas maintained by the maintenance and/or removal of densely growing saplings and shrubs to provide a view of the lake via small clearings along the shoreline;
- Line of sight provided on a relatively narrow basis but clear of sight obstructions within view; and
- Dense planting of low growing native shrubs where erosion or colonization by invasive vegetation may become an issue within the opening.



## Natural Views:

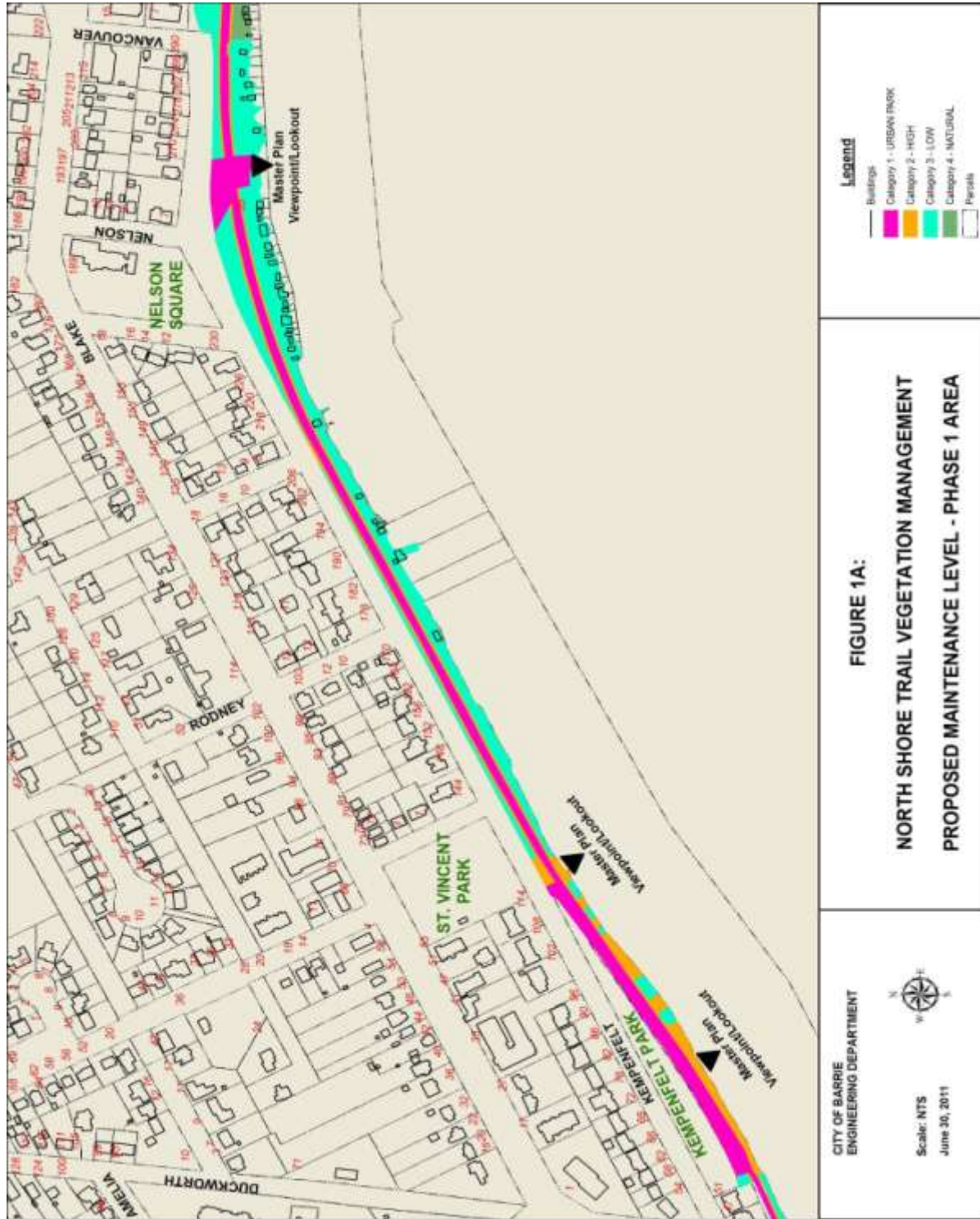
- Areas maintained by the pruning (branch maintenance) of trees and shrubs to provide “window” views of the lake through the natural vegetation and shoreline;
- Increased opportunities in these areas for bird and wildlife viewing within the adjacent large trees; and
- Seeding and/or planting of low growing native shrubs/perennials may be used in areas where erosion or invasive vegetation is an issue.



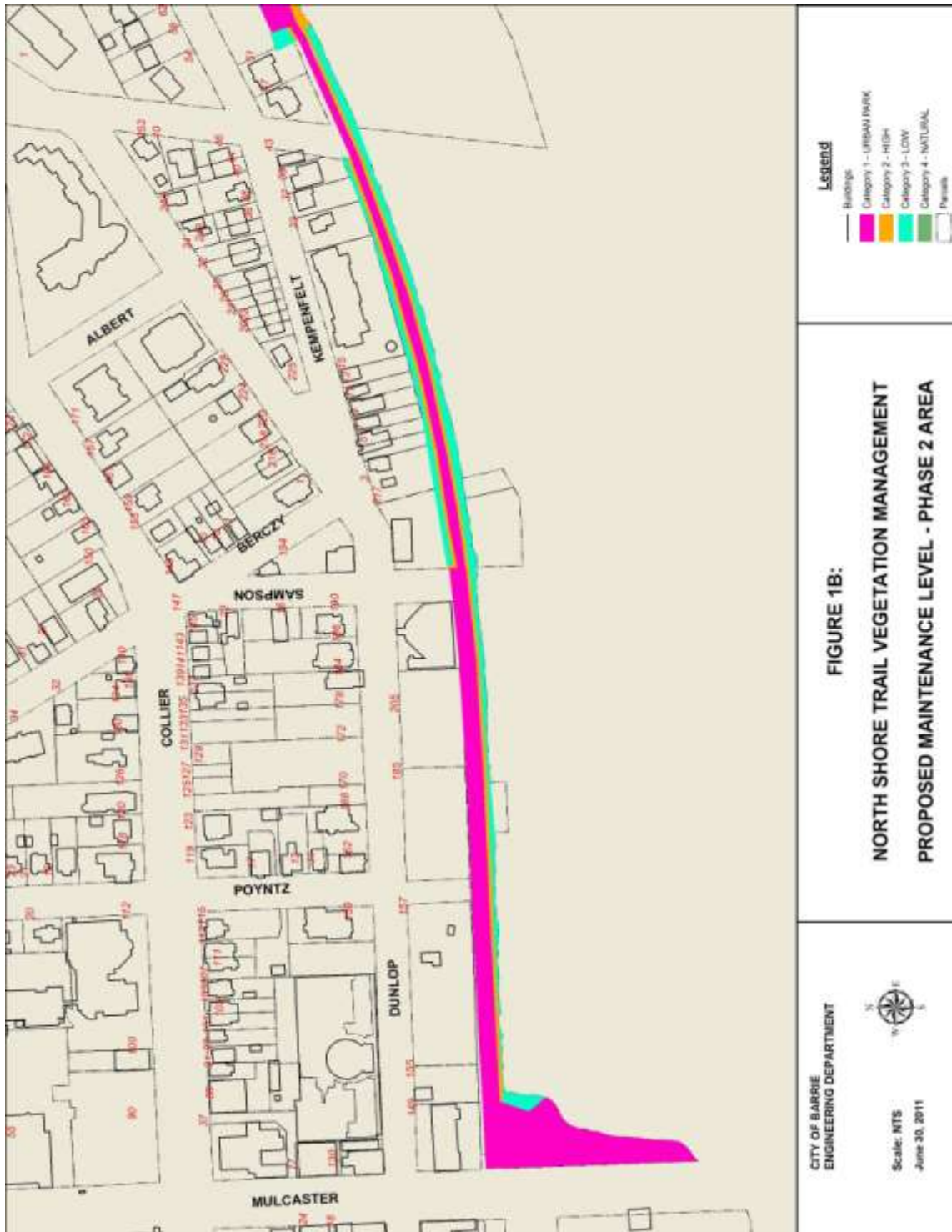
# Report to Community Services Committee

## APPENDIX "B"

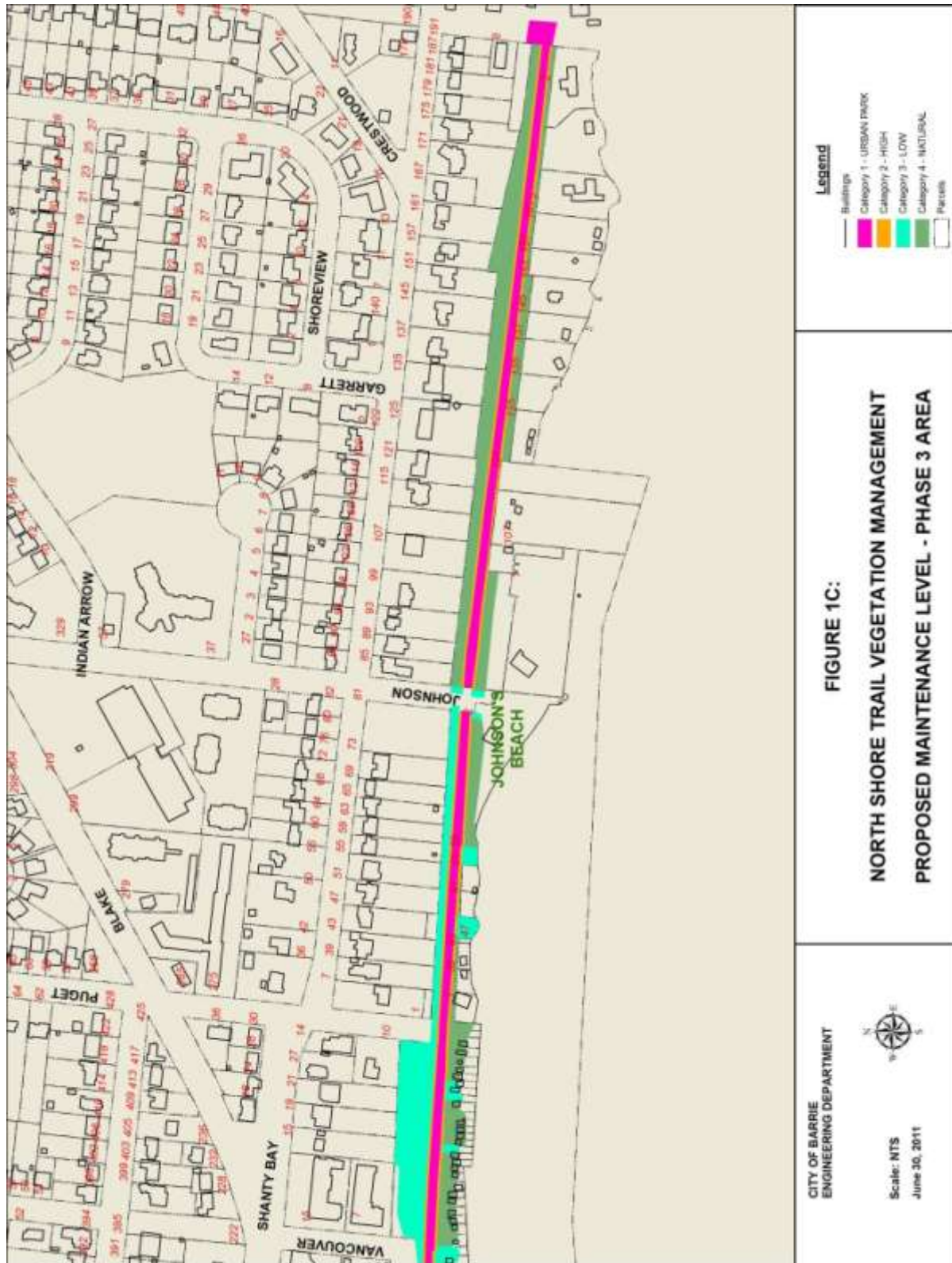
### Proposed North Shore Trail Vegetation Management Plan



# Report to Community Services Committee



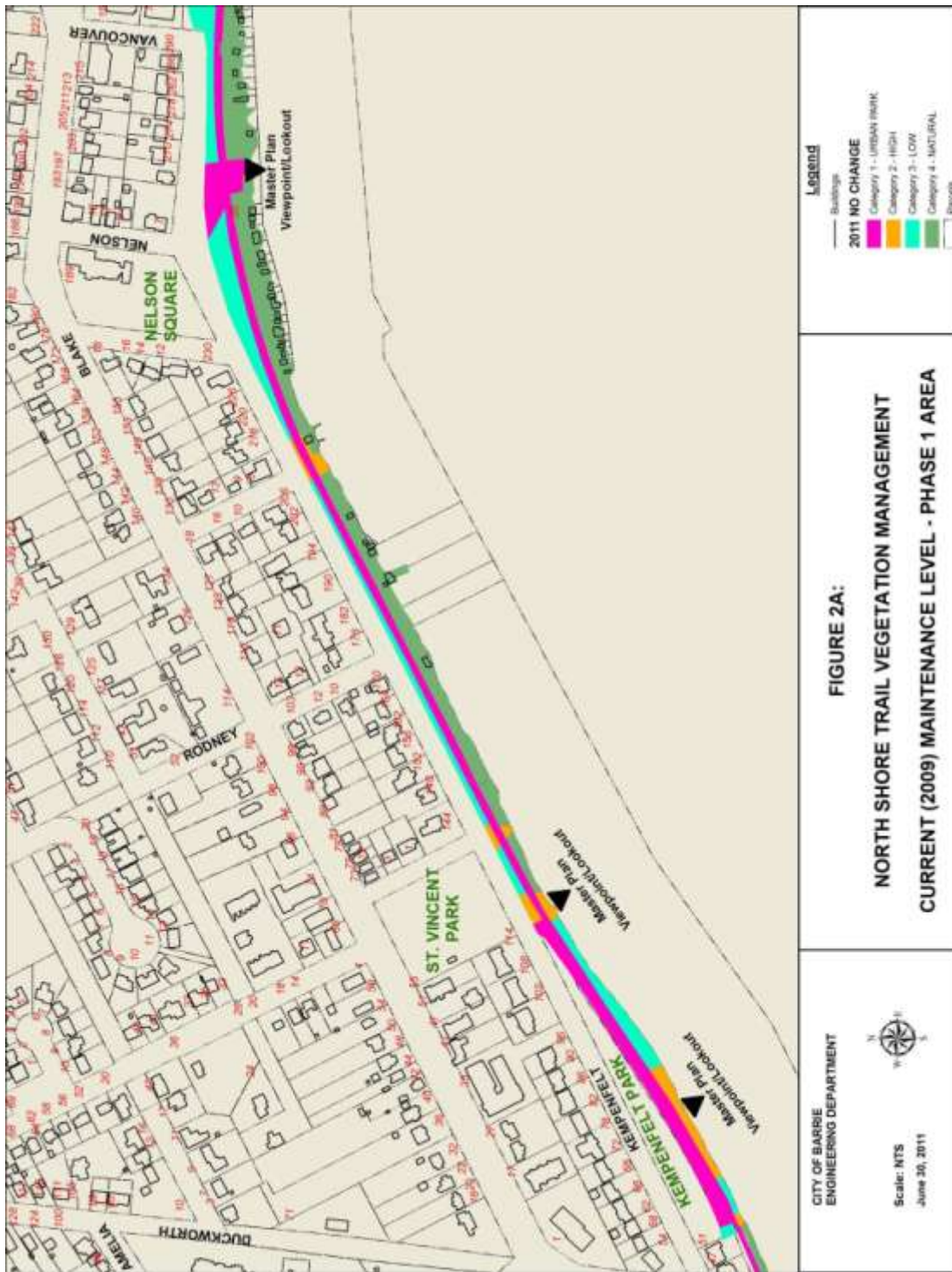
# Report to Community Services Committee



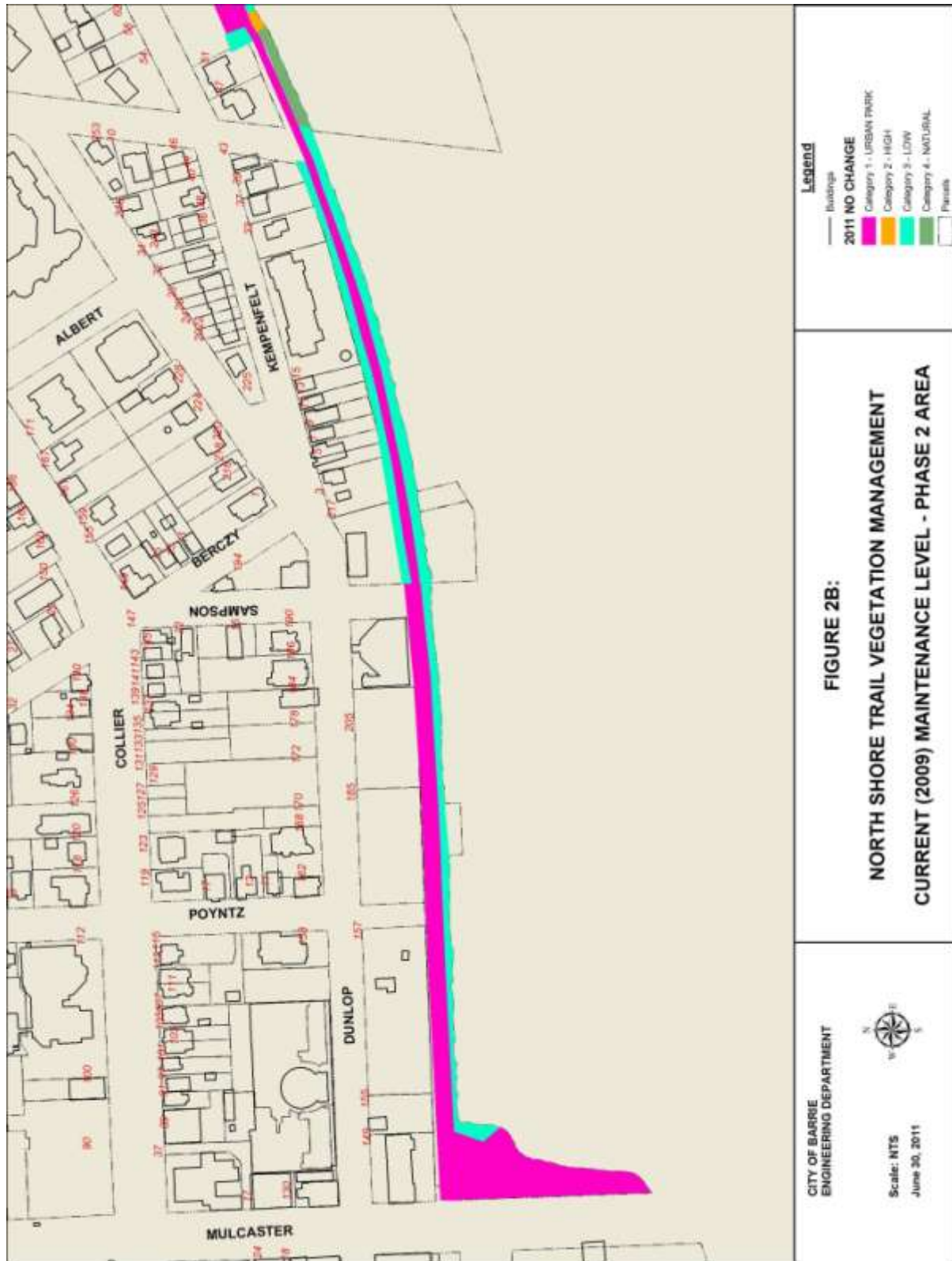
# Report to Community Services Committee

## Appendix "C"

### Existing North Shore Trail Vegetation Management Plan

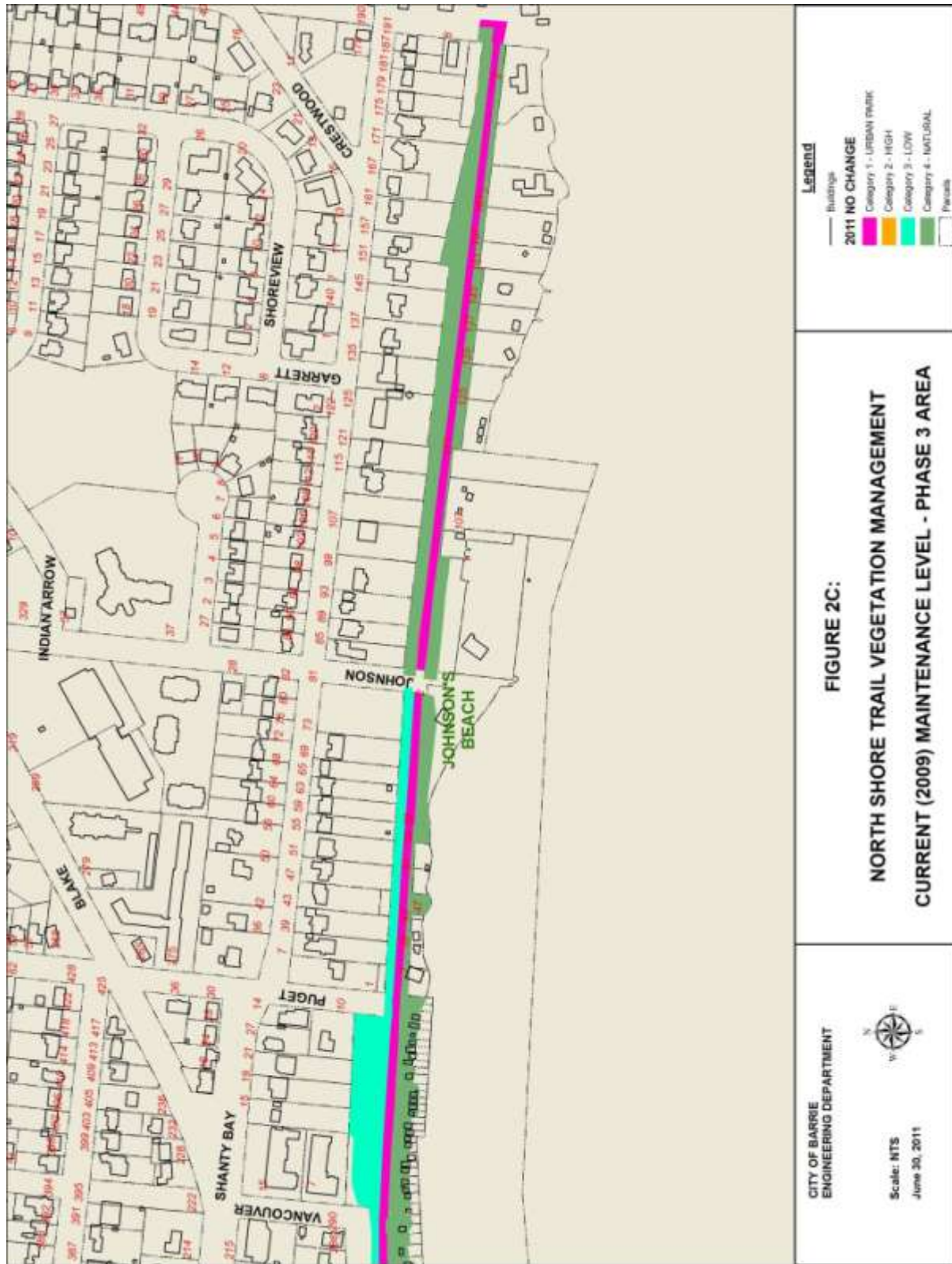


# Report to Community Services Committee





# Report to Community Services Committee



# Report to Community Services Committee

## Appendix “D”

### NORTH SHORE TRAIL VEGETATION MANAGEMENT PLAN REVIEW PUBLIC INFORMATION CENTRE SUMMARY

The purpose of the questionnaire was to assist the City of Barrie to reexamine the existing North Shore Trail Vegetation Management Plan to determine whether the plan adequately focuses on safety, access and the general enjoyment of the trail and waterfront as a priority while balancing the natural elements of the water, the trees, the wildlife and protecting the environment.

Total Number of Attendees Signed into Public Information Centre on March 9, 2011: 48

#### Summary of Surveys Received by Phase:

	# of Surveys Received	# of Addresses in Phase	% Response
Phase 1	14	40	35%
Phase 2	6	18	33%
Phase 3	11	51	22%
Not in Phase	10		
Total # Respondents	41		

#### 1. Respondents who agreed with the following components of the Vegetation Management Plan:

- 74% a. General maintenance of the trail corridor including the removal of all trees, branches and/or shrubs within 1 metre horizontally and 2.5 metres vertically from the trail surface;
- 95% b. Removal of dead, diseased or hazardous trees from the vicinity of the trail;
- 74% c. Removal of all non-native, invasive vegetation from the trail corridor;
- 90% d. The planting of disturbed areas with native low growing shrubs;
- 51% e. Planting of disturbed areas with native trees;
- 85% f. Consideration of the use of a direct application (drilling and/or injection mechanisms) of an approved forestry herbicide to treat stumps which are continuing to aggressively coppice (suckering); and
- 49% g. Maintenance of the trail and existing viewpoints as identified within the North Shore Trail Master Plan (Final Concept: Multi-Use Trail, May 2002).

#### 2. Total number of respondents who support the creation of an “Adopt-a-Bed” Program for residents to plant and maintain attractive flower and/or shrub beds along the North Shore Trail: 21/41 (51%)

##### Locations suggested:

- (4) Between upper and lower trail along Kempenfelt Drive
- (3) All along trail
- (3) At Kempenfelt Park
- North side of trail only
- At trail end/start at Penetanguishene Road
- Adjacent to walkway between parking lot and Johnson’s Beach

# Report to Community Services Committee

### 3. PUBLIC OPINION OF DIFFERENT TYPES OF TRAIL SECTIONS:

Respondents rated on a scale from **0 to 5** the following trail sections using **0** (zero) as not desirable and **5** (five) as highly desirable:



Avg. Rating: 3.4



Avg. Rating: 3.5



Avg. Rating: 1.9



Avg. Rating: 2.5



Avg. Rating: 1.9



Avg. Rating: 2.9

*Note: All categories were rated by respondents with a minimum of 0 and a maximum of 5.*

### 4. PUBLIC OPINION OF DIFFERENT TYPES OF VEGETATION AND VIEW MANAGEMENT:

Respondents rated on a scale from **0 to 5** the following Vegetation Maintenance using **0** (zero) as not desirable and **5** (five) as highly desirable:



Avg. Rating: 1.9



Avg. Rating: 2.4



Avg. Rating: 2.5



Avg. Rating: 1.9



Avg. Rating: 3.6 (1)



Avg. Rating: 3.9

(1) Note: Ratings by respondents ranged from a minimum of 2 to a max. of 5 (all others ranged from 0-5).

# Report to Community Services Committee

---

5. What level of shade respondents believed is appropriate for the trail?

8%	Fully shaded (tree lined)
11%	Mostly shaded (lots of trees but can see lake through vegetation)
3%	Filtered shade (even mix of trees and openings to the lake)
27%	Spotted shade (regular spaced intervals of trees with regular view of lake)
13%	Occasional shade (long open expanses of low vegetation with an occasional shade tree)
41%	A mix of the above
0%	Other: While there were no checks for only "other" there were a few general comments

6. Option(s) that summarize(s) respondents' opinions on vegetation management within the North Shore Trail corridor:

63%	I would like to see selective removal of undesirable trees/vegetation to enhance the views of the Bay.
(73%)	
10%	I would only like to see views maintained in pre-selected areas.
(27%)	
23%	I would be opposed to any trees/vegetation removals except for trail maintenance and safety.
(8%)	
8%	I would be strongly opposed to the removal of any trees/vegetation along the trail.
(5%)	
38%	I would like to see the planting of native species of trees and/or vegetation along the trail to stabilize slopes and enhance the natural quality of the trail and provide wildlife habitat.
(49%)	
23%	I would like to enter into a partnership with the City to create buffer plantings on private or public land to meet specific screening requirements of local residents.
(32%)	

Note: Percentage in brackets denotes the responses (60 in total) from the questionnaire sent out to residents living directly adjacent to the trail in 2004 – for comparison purposes.

# Report to Community Services Committee

---

The North Shore Trail Vegetation Management Plan was separated into three phases for implementation purposes. Phase 1 refers to the area between the western extent of Kempenfelt Park to the east end of Kempenfelt Drive, Phase 2 is from Mulcaster Street (Heritage Park) to Kempenfelt Park and Phase 3 (yet to be implemented) is from the east end of Kempenfelt Drive to Penetanguishene Road (see attached Phase Map for further details). The following questions were specific to areas; respondents were asked to answer any or all as they saw fit.

7. Respondents were asked to describe the aspects of the plan that they would like to see continued as completed during the 2010 maintenance season (were generally happy with)

**PHASE 1 Comments:** 5 of 10 comments related to being generally happy with trimming and maintenance completed in 2010.

**PHASE 2 Comments:** 7 of 11 comments related to being generally happy with maintenance completed in 2010.

**PHASE 3 Comments:** 5 of 10 comments related to being happy with the natural character of the planned implementation of Phase 3 area.

8. Respondents were asked to describe the aspects of the plan that they would like to see enhanced or improved upon. Respondents were asked to be as specific as possible and explain the benefits of the improvements to the users of the trail (e.g. general enjoyment, safety, etc.)

**PHASE 1 Comments (29):**

- 14 - Remove/prune/clear area between the trail and the lake for increased views/trail enjoyment
- 5 – Remove/prune/clear area between trail and lake to increase visibility for safety
- 2 – Remove/prune/clear area between Kempenfelt Drive and trail for safety and views.
- 3 – Keep trail as natural as possible (i.e. no more removals)
- 5 – Various (prevent erosion, remove poison ivy, no spraying of vegetation)

**PHASE 2 Comments (9):**

- 4 – Increase removal/pruning of vegetation for enhanced views
- 2 – Increase shrub plantings for screening/aesthetics
- 2 – Happy with the way it is (continue maintenance program regularly but no additional removals)
- 1 – Remove poison ivy

**PHASE 3 Comments (15):**

- 6 – Remove/prune/clear for views of the water/shoreline
- 5 – Implement this phase as planned (2011)
- 2 – Remove poison ivy
- 2 – Do nothing; leave area in current condition

# Report to Community Services Committee

---

9. Respondents were asked to provide any other comments to assist the City of Barrie in reviewing the North Shore Trail Vegetation Management Plan:

Below are general comments received related to vegetation management on the North Shore Trail.

- 15 out of 49: Want a natural trail (maintain its natural character)
- 2 out of 49: Are happy with the current trail maintenance/plan
- 5 out of 49: Want the plan implemented in a more consistent manner (year to year)
- 15 out of 49: Want more clearing/pruning of shrubs/trees than in present plan to increase views/enjoyment/safety – mainly related to removal of shrubs and increased maintenance activities
- 4 out of 49: Want to be able to enter into a partnership with the City to clear/prune trees along the trail
- 4 out of 49: Main concern is with safety on/around the trail
- 2 out of 49: Concerned with the public input/process of allowing the “Adopt-a-Park” group to influence the public planning process.
- 2 out of 49: Comments related to concern/questioning the importance of managing non-native invasive species of vegetation.

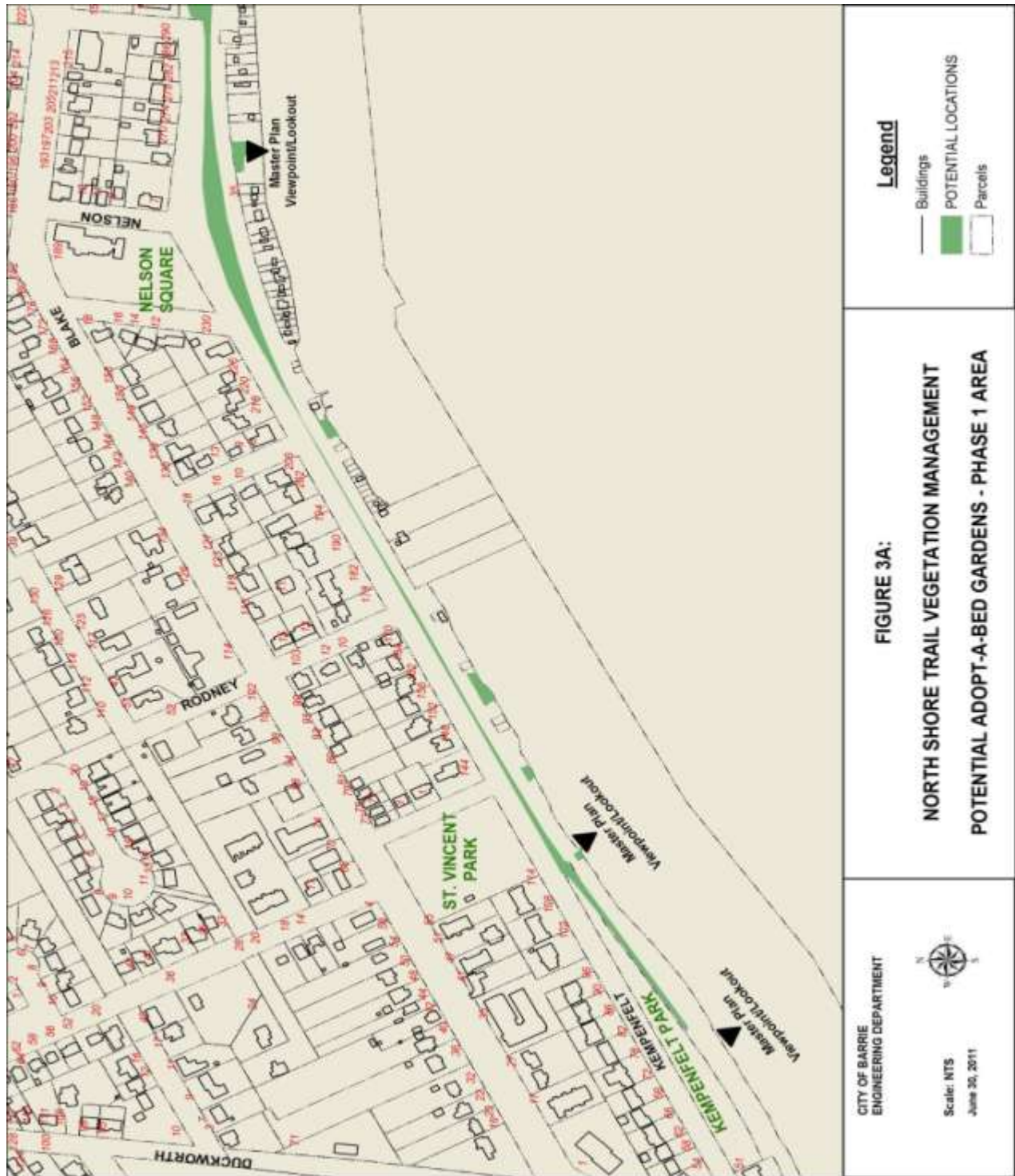
Fifty-one additional general comments were received related to the Park Master Plan components (or other).

- Dog parks
- Access points
- Stairs
- Boardwalks
- Paving / Trail surface
- Lighting
- Poop & scoop
- Garbage cans
- Fencing
- Boating events
- Balloon events
- Water markers
- Picnic benches
- Shelters
- Ice cream stand
- Skiing / snowshoeing
- Motorized vehicles
- Distance markers on trail and on shoreline
- Boathouse removals/restoration
- Public spaces on the shoreline
- Fishing piers
- New viewpoints
- Stairs to shoreline
- Safety fencing/bollards at top of slope on trail
- Parking restrictions on Kempenfelt Drive
- Speed limit change (40 km/h) on Kempenfelt Drive
- Concerns about community gardens
- Establishment of a North Shore Trail resident committee/consultation group

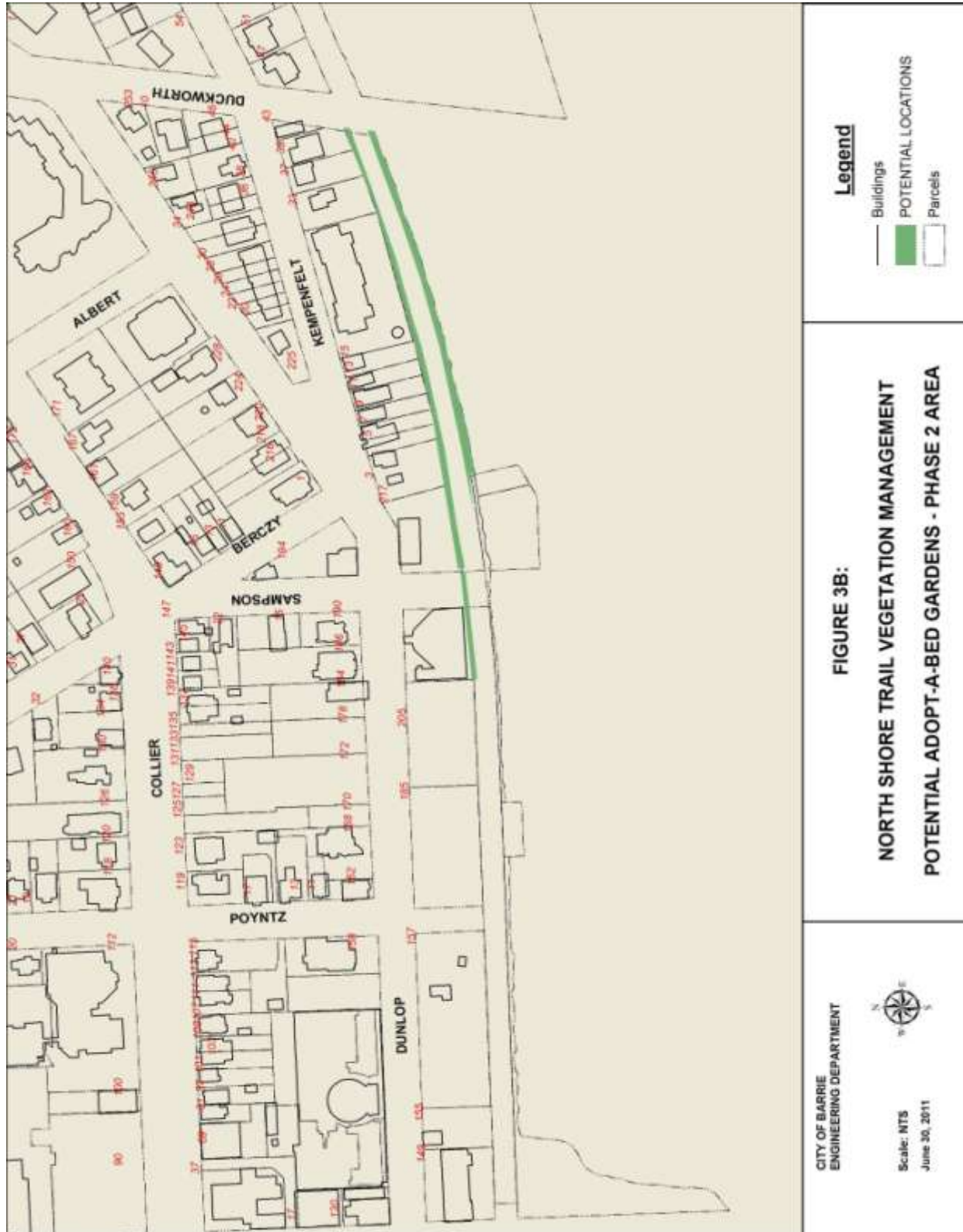
# Report to Community Services Committee

## Appendix "E"

### Potential "Adopt-a-Bed" Garden Locations



# Report to Community Services Committee



**Legend**

- Buildings
- POTENTIAL LOCATIONS
- Parcels

**FIGURE 3B:**

**NORTH SHORE TRAIL VEGETATION MANAGEMENT  
POTENTIAL ADOPT-A-BED GARDENS - PHASE 2 AREA**

CITY OF BARRIE  
ENGINEERING DEPARTMENT



Scale: NTS  
June 30, 2011



# Report to Community Services Committee

