

TO: GENERAL COMMITTEE

SUBJECT: ST. MARGUERITE D'YOUVILLE CATHOLIC SCHOOL VARIABLE TIME FLASHING 40 KM/H ZONE

WARD: WARD 4

PREPARED BY AND KEY CONTACT: J. MACDONALD, C.E.T.
TRAFFIC TECHNOLOGIST (EXT. 5178)

SUBMITTED BY: J. WESTON, M.A.Sc., P. Eng., PMP
DIRECTOR OF ENGINEERING

GENERALMANAGER APPROVAL: R. J. FORWARD, MBA, M.Sc., P. Eng.
GENERAL MANAGER OF INFRASTRUCTURE & GROWTH MANAGEMENT

CHIEF ADMINISTRATIVE OFFICER APPROVAL: C. LADD
CHIEF ADMINISTRATIVE OFFICER

RECOMMENDED MOTION

1. That Rates of Speed By-law 2002-191, Schedule "A" "Authorized Rates of Maximum Speed – 40 kilometres per hour", be amended by deleting the following:

Street	From	To
Hanmer Street	Anne Street	195 metres east of Kozlov Street.

And adding the following:

Street	From	To
Hanmer Street	Anne Street	13 metres west of Finlay Road

2. That Rates of Speed By-law 2002-191, Schedule "B" "Authorized Rates of Maximum Speed – Variable Time Flashing 40 kilometres per hour", be amended by adding the following:

Street	From	To
Hanmer Street	13 metres west of Finlay Road	38 metres east of Kozlov Street

PURPOSE & BACKGROUND

3. This staff report is a follow up to Staff Report ENG027-12 St. Marguerite d'Youville Community Safety Zone which implemented a Community Safety Zone and 40 km/h zone on Hanmer Street between Anne Street and Kozlov Street. This staff report amends the 40 km/h School Speed Zone into two (2) separate zones, a Variable Time Flashing 40 km/h between Finlay Road and Kozlov Street and a 40 km/h School Speed Zone between Anne Street and Finlay Road.

4. Hanmer Street between Finlay Road and Bayfield Street is a four (4) lane collector roadway with a pavement width of 14 metres. Traffic volumes are projected to increase to approximately 10,000 vehicles per day with the recently constructed extension of Hanmer Street between Kozlov Street and Bayfield Street. (See Appendix "A")
5. Two (2) elementary schools are located in the vicinity of Hanmer Street. St. Marguerite d'Youville Catholic School which is located on the south west corner of Hanmer Street and Kozlov Street, and West Bayfield Elementary School which is located on the east side of Ford Street just south of Hanmer Street.
6. Currently, there is a Community Safety Zone (CSZ) and reduced 40 km/h zone on Hanmer Street between Anne Street to a point 195 metres east of Kozlov Street.
7. Community Safety Zones, which double the fines of any moving violations, are to be installed as per Council adopted Policy for 250 metres either side of the school property on all adjacent roadways. The policy requires that Community Safety Zones adjacent to Elementary Schools have a reduced speed limit of 40 km/h.
8. As outlined within the Ontario Traffic Act, Variable Time Flashing 40 km/h signs are only installed on a portion of the roadway that has a school entrance or exit and a maximum distance of 150 metres either side of the limits of the school.
9. Council Policy is to implement Variable Time Flashing 40 km/h signs for Elementary Schools on an arterial or collector roadway having an average daily traffic volume of at least 5,000 vehicles per day.

ANALYSIS

10. Traffic volumes on Hanmer Street are projected to increase to approximately 10,000 vehicles per day near Kozlov Street, which exceeds the council policy of 5,000 vehicles per day. The intention of the policy was to avoid impacting the roadway when children are not travelling to or from school.
11. West Bayfield Elementary School does not have a direct exit or entrance along Hanmer Street to warrant the installation of a Variable Time Flashing 40 km/h Zone. Therefore, staff recommend a 40 km/h zone be installed in accordance with council policy for all roadways adjacent to an elementary school. The CSZ limits would remain unaltered. Staff recommend that Rates of Speed By-law 2002-191, Schedule "A" "Authorized Rates of Maximum Speed – 40 kilometres per hour", be amended by deleting the following:

Street	From	To
Hanmer Street	Anne Street	195 metres east of Kozlov Street.

And adding the following:

Street	From	To
Hanmer Street	Anne Street	13 metres west of Finlay Road

12. St. Marguerite d'Youville Catholic School has a direct entrance and exit along Hanmer Street to warrant the installation of a Variable Time Flashing 40 km/h Zone. Therefore, staff recommend that Rates of Speed By-law 2002-191, Schedule "B" "Authorized Rates of Maximum Speed – Variable Time Flashing 40 km/h", be amended by adding the following:

Street	From	To
Hanmer Street	13 metres west of Finlay Road	38 metres east of Kozlov Street

13. Upon Council approval, staff intend to install the Variable Time Flashing 40 km/h Zone before the end of 2013.
14. Barrie Police Service, Barrie Fire and Emergency Service, and Municipal Law and Prosecution Services staff do not oppose the recommended motion.

ENVIRONMENTAL MATTERS

15. There are no environmental matters related to the recommendation.

ALTERNATIVE

16. The following alternative is available for consideration by General Committee:

Alternative #1 General Committee could decide to not install a Variable Time Flashing 40 km/h Zone on Hanmer Street from a point 13 metres west of Finlay Road to a point 38 metres east of Kozlov Street.

This alternative is not recommended as the vehicle volumes are greater than the 5,000 vehicles per day and the intention of the policy was to avoid impacting an arterial or collector roadway when children are not travelling to or from school.

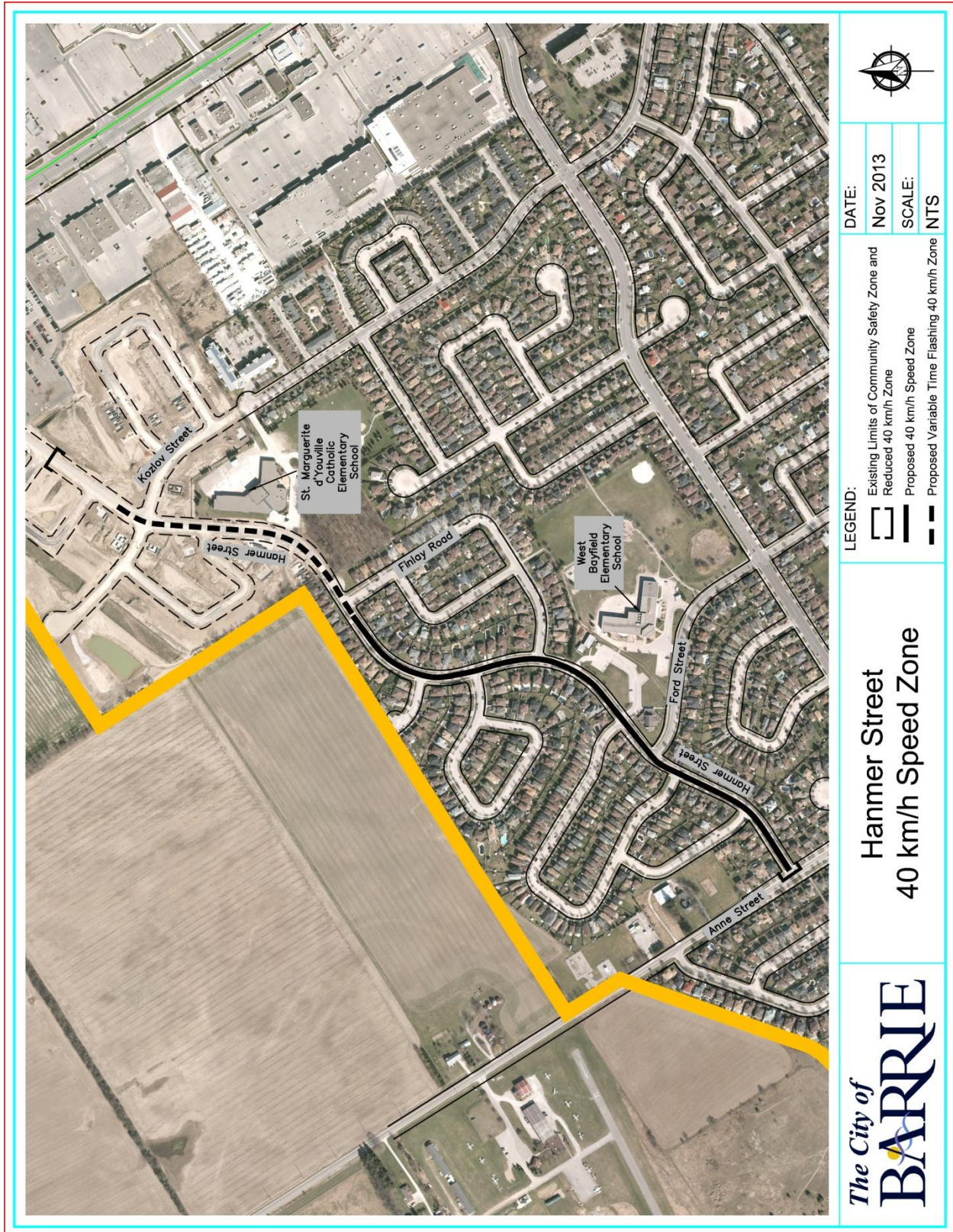
FINANCIAL

17. The cost to implement and/or relocate existing School Zone 40 km/h zone signs is \$300 which can be accommodated in the 2013 Business Plan.
18. Funds in the amount of \$15,000 for the Variable Time Flashing 40 km/h zone are already included within the 2013 Business Plan.

LINKAGE TO COUNCIL STRATEGIC PRIORITIES

19. The recommendations included in this Staff Report are not specifically related to the goals identified in the 2010-2014 City Council Strategic Plan.

Appendix "A"



DATE: Nov 2013
SCALE: NTS

LEGEND:
 Existing Limits of Community Safety Zone and Reduced 40 km/h Zone
 Proposed 40 km/h Speed Zone
 Proposed Variable Time Flashing 40 km/h Zone

**Hammer Street
40 km/h Speed Zone**