




TO: GENERAL COMMITTEE


SUBJECT: DOWNTOWN - WEST THREE (3) HOUR PARKING LIMIT

WARD: WARD 2

PREPARED BY AND KEY CONTACT: J. MACDONALD, C.E.T.
TRANSPORTATION TECHNOLOGIST (EXT. 5178) 

SUBMITTED BY: D. FRIARY
DIRECTOR OF ROADS, PARK, and FLEET 

GENERAL MANAGER APPROVAL: R. J. FORWARD, MBA, M.Sc., P. Eng.
GENERAL MANAGER OF INFRASTRUCTURE & GROWTH MANAGEMENT 

CHIEF ADMINISTRATIVE OFFICER APPROVAL: C. LADD
CHIEF ADMINISTRATIVE OFFICER 

RECOMMENDED MOTION

1. That Traffic By-law 80-138 Schedule "A" "No Parking Any Time" be amended and delete the following:

"Sophia Street North side between Owen Street and Peel Street Any time"

And add the following:

"Sophia Street North side between McDonald Street and Peel Street Any time"

2. That Traffic By-law 80-138 Schedule "C" "Restricted Parking Between the Hours as Specified Mondays, Tuesdays, Wednesdays, Thursdays, and Fridays for a Limited Time During Stated Hours Except on Statutory Holidays" be amended and delete the following:

"Owen Street East side from Sophia Street to Wellington Street Two (2) hours from 8:00 a.m. to 5:00 p.m. Monday to Friday excluding Statutory holidays"

"Sophia Street South side from McDonald Street to Peel Street Two (2) hours from 8:00 a.m. to 5:00 p.m. Monday to Friday excluding Statutory holidays"

And add the following

<u>"Berczy Street"</u>	East side from a point 30 metres north of Penetang Street to Wellington Street	Three (3) hours from 8:00 a.m. to 5:00 p.m. Monday to Friday except Statutory Holidays."
<u>"Owen Street"</u>	East side from Sophia Street to Wellington Street	Three (3) hours from 8:00 a.m. to 5:00 p.m. Monday to Friday except Statutory Holidays."
<u>"Peel Street"</u>	East side from Sophia Street to Wellington Street	Three (3) hours from 8:00 a.m. to 5:00 p.m. Monday to Friday except Statutory Holidays."
<u>"Sophia Street"</u>	South Side from McDonald Street to Peel Street	Three (3) hours from 8:00 a.m. to 5:00 p.m. Monday to Friday except Statutory Holidays."

PURPOSE & BACKGROUND

3. On March 24, 2014 City Council adopted Motion 14-G-062 regarding the investigation of parking alternatives on Sophia Street East, Wellington Street, Clapperton Street, Owen Street, and Berczy Street which states:

"That staff in the Roads, Parks and Fleet Department investigate the feasibility of addressing parking concerns in the area bordered by Sophia Street East to the south, Wellington Street to the north, Clapperton Street to the west and Berczy Street to the east, through alternatives including but not limited to establishing maximum hours of parking, prohibiting parking on one side of the street and/or the introduction of metered parking, and report back to General Committee."

4. The purpose of this investigation was to review the parking impacts of overflow parking from the Downtown Core in front of residential houses, please refer to Appendix "A" for a map of the study area.

ANALYSIS

BERCZY STREET – PENETANG STREET AND WELLINGTON STREET

5. Berczy Street between Penetang Street and Wellington Street is a local roadway with a pavement width of 8.5 metres and a sidewalk on the east side, please refer to Appendix "B".
6. Currently parking is prohibited anytime on the west side of Berczy Street.

7. A Parking Questionnaire was prepared and mailed to 23 property owners on Berczy Street between Penetang Street and Wellington Street. Results of the Questionnaire are as follows:

PROHIBITED PARKING SURVEY	RESPONSES RECEIVED	PERCENTAGE OF RESPONSES
Option A – Leave current parking regulations in place on Berczy Street between Penetang Street and Wellington Street.	3	75%
Option B – Implement a three (3) hour limit on the east side of Berczy Street between Penetang Street and Wellington Street; 7:00 am to 5:00 pm Monday to Friday excluding Statutory Holidays. Implement No Parking Anytime on the west side of Berczy Street between Penetang Street and Wellington Street.	1	25%
Option C - Implement a three (3) hour limit on the west side of Berczy Street between Penetang Street and Wellington Street; 7:00 am to 5:00 pm Monday to Friday excluding Statutory Holidays.. Implement No Parking Anytime on the east side of Berczy Street between Penetang Street and Wellington Street.	0	0%
TOTAL (23)	4	17%

8. After review, staff recommend implementing a three (3) hour parking limit on the east side of Berczy Street between Penetang Street and Wellington Street this will match the proposed parking restrictions in staff report RPF006-14 Downtown Three (3) Hour Parking Limit.
9. Based on the recommendation, Traffic By-law 80-138 Schedule "C" "Restricted Parking Between the Hours as Specified Mondays, Tuesdays, Wednesdays, Thursdays, and Fridays for a limited Time During Stated Hours Except on Statutory Holidays" would be amended by adding the following:

<u>"Berczy Street</u>	East side from a point 30 metres north of Penetang Street to Wellington Street	Three (3) hours from 8:00 a.m. to 5:00 p.m. Monday to Friday except Statutory Holidays."
-----------------------	--	--

CLAPPERTON STREET – SOPHIA STREET AND WELLINGTON STREET

10. Clapperton Street between Sophia Street and Wellington Street is a local roadway with a pavement width of 8.0 metres and a sidewalk on the west side, please refer to Appendix "C".
11. Parking is prohibited anytime on both the east and west sides of Clapperton Street between Sophia Street and Wellington Street.

12. A Parking Questionnaire was prepared and mailed to 12 property owners on Clapperton Street and surrounding roadways. Results of the Questionnaire are as follows:

PROHIBITED PARKING SURVEY	RESPONSES RECEIVED	PERCENTAGE OF RESPONSES
Option A - Leave current parking in place on Clapperton Street between Sophia Street and Wellington Street.	4	80%
Option B - Implement a three (3) hour limit on the east side of Clapperton Street between Sophia Street and Wellington Street; 7:00 am to 5:00 pm Monday to Friday excluding Statutory Holidays. Implement No Parking Anytime on the west side of Clapperton Street between Sophia Street and Wellington Street.	1	20%
Option C - Implement a three (3) hour limit on the west side of Clapperton Street between Sophia Street and Wellington Street; 7:00 am to 5:00 pm Monday to Friday excluding Statutory Holidays. Implement No Parking Anytime on the east side of Clapperton Street between Sophia Street and Wellington Street.	0	0%
TOTAL (12)	5	42%

13. After review, staff do not recommend amending the current parking restrictions on Clapperton Street between Sophia Street and Clapperton Street at this time, as this portion of Clapperton is narrow and cannot accommodate on-street parking.

OWEN STREET – SOPHIA STREET AND WELLINGTON STREET

14. Owen Street between Sophia Street and Wellington Street is a local roadway with a pavement width of 7.5 metres and a sidewalk on both sides, please refer to Appendix "D".
15. Currently, parking is prohibited anytime on the west side of Owen Street between Sophia Street and Wellington Street and a two (2) hour parking limit on the east side.

16. A Parking Questionnaire was prepared and mailed to 20 property owners on Owen Street and surrounding roadways. Results of the Questionnaire are as follows:

PROHIBITED PARKING SURVEY	RESPONSES RECEIVED	PERCENTAGE OF RESPONSES
Option A - Leave current parking in place on Owen Street between Sophia Street and Wellington Street.	3	50%
Option B - Implement a three (3) hour limit on the east side of Owen Street between Sophia Street and Wellington Street; 7:00 am to 5:00 pm Monday to Friday Excluding Statutory Holidays. Implement No Parking Anytime on the west side of Owen Street between Sophia Street and Wellington Street.	3	50%
Option C - Implement a three (3) hour limit on the west side of Owen Street between Sophia Street and Wellington Street; 7:00 am to 5:00 pm Monday to Friday Excluding Statutory Holidays. Implement No Parking Anytime on the east side of Owen Street between Sophia Street and Wellington Street.	0	0%
TOTAL (20)	6	30%

17. After review, staff recommend amending the current parking regulations on Owen Street between Sophia Street and Wellington Street to increase the current two (2) hour parking limit to three (3) hour parking limit, this will align Owen Street with the other parking restrictions in the area and standardize on-street parking limit within the downtown core.
18. Based on the recommendation Traffic By-law 80-138 Schedule "C" "Restricted Parking Between the Hours as Specified Mondays, Tuesdays, Wednesdays, Thursdays, and Fridays for a limited Time During Stated Hours Except on Statutory Holidays" would be amended by deleting the following:

<u>"Owen Street</u>	East side from Sophia Street to Wellington Street	Two (2) hours from 8:00 a.m. to 5:00 p.m. Monday to Friday except Statutory Holidays."
---------------------	---	--

And add the following:

<u>"Owen Street</u>	East side from Sophia Street to Wellington Street	Three (3) hours from 8:00 a.m. to 5:00 p.m. Monday to Friday except Statutory Holidays."
---------------------	---	--

PEEL STREET – SOPHIA STREET AND WELLINGTON STREET

19. Peel Street between Sophia Street and Wellington Street is a local roadway with a pavement width of 8.0 metres and a sidewalk on both sides, please refer to Appendix "E".
20. Parking is prohibited anytime on the west side only of Peel Street between Sophia Street and Wellington Street.
21. A Parking Questionnaire was prepared and mailed to 16 property owners on Peel Street and surrounding roadways. Results of the Questionnaire are as follows:

PROHIBITED PARKING SURVEY	RESPONSES RECEIVED	PERCENTAGE OF RESPONSES
Option A - Leave current parking in place on Peel Street between Sophia Street and Wellington Street.	0	0%
Option B - Implement a three (3) hour limit on the east side of Peel Street between Sophia Street and Wellington Street; 7:00 am to 5:00 pm Monday to Friday excluding Statutory Holidays. Implement No Parking Anytime on south side of Peel Street between Sophia Street and Wellington Street.	5	100%
Option C - Implement a three (3) hour limit on the south side of Peel Street between Sophia Street and Wellington Street; 7:00 am to 5:00 pm Monday to Friday excluding Statutory Holidays. Implement No Parking Anytime on north side of Peel Street between Sophia Street and Wellington Street.	0	0%
TOTAL (16)	5	31%

22. After review, staff recommend implementing the proposed three (3) hour parking limit will prevent people from parking along Peel Street for long durations and walking to the downtown core. This will provide on-street parking for area residents and service people to the apartment building located on Peel Street and still create turn-over to discourage long duration parking.
23. Based on the recommendation, Traffic By-law 80-138 Schedule "C" "Restricted Parking Between the Hours as Specified Mondays, Tuesdays, Wednesdays, Thursdays, and Fridays for a limited Time During Stated Hours Except on Statutory Holidays" would be amended by adding the following:

"Peel Street

East side from Sophia Street to Wellington Street

Three (3) hours from
8:00 a.m. to 5:00
p.m. Monday to
Friday except
Statutory Holidays."

SOPHIA STREET – MCDONALD STREET TO PEEL STREET

- 24. Sophia Street between McDonald Street and Peel Street is a local roadway with a pavement width of 8.5 metres and a no sidewalks; please refers to Appendix "F".
- 25. Currently, parking is prohibited anytime on the north side of Sophia Street between Owen Street and Peel Street, and a two (2) hour parking limit on the south side between McDonald Street and Peel Street.
- 26. A Parking Questionnaire was prepared and mailed to 20 property owners on Sophia Street and surrounding roadways. Results of the Questionnaire are as follows:

PROHIBITED PARKING SURVEY	RESPONSES RECEIVED	PERCENTAGE OF RESPONSES
Option A - Leave current parking in place on Sophia Street.	2	25%
Option B - Implement a three (3) hour limit on the north side of Sophia Street between McDonald Street and Peel Street; 7:00 a.m. to 5:00 p.m. Monday to Friday excluding Statutory Holidays. Implement No Parking Anytime on the south side of Sophia Street between McDonald Street and Peel Street.	4	50%
Option C - Implement a three (3) hour limit on the south side of Sophia Street between McDonald Street and Peel Street; 7:00 a.m. to 5:00 p.m. Monday to Friday excluding Statutory Holidays. Implement No Parking Anytime on the north side of Sophia Street between McDonald Street and Peel Street.	2	25%
TOTAL (20)	6	30%

- 27. After review, staff recommend the current no parking anytime on the north side of Sophia Street between Owen Street and Peel Street will need to be extended to McDonald Street to Peel Street.
- 28. Based on the recommendation Traffic By-law 80-138 Schedule "A" "No Parking Anytime" would be amended by deleting the following:

"Sophia Street North side between Owen Street and Peel Street Any Time."

And add the following:

"Sophia Street North side between McDonald Street and Peel Street Any Time."

- 29. After review, staff recommend increasing the existing two (2) hour parking limit on the south side of Sophia Street between McDonald Street and Peel Street to three (3) hour parking limit to match other parking restrictions in the area to reduce confusion for vehicles parking.

30. Based on the recommendation, Traffic By-law 80-138 Schedule "C" "Restricted Parking Between the Hours as Specified Mondays, Tuesdays, Wednesdays, Thursdays, and Fridays for a limited Time During Stated Hours Except on Statutory Holidays" would be amended by deleting the following:

<u>"Sophia Street</u>	South side from McDonald Street to Peel Street	Two (2) hours from 8:00 a.m. to 5:00 p.m. Monday to Friday except Statutory Holidays."
-----------------------	--	--

And add the following:

<u>"Sophia Street</u>	South side from McDonald Street to Peel Street	Three (3) hours from 8:00 a.m. to 5:00 p.m. Monday to Friday except Statutory Holidays."
-----------------------	--	--

WELLINGTON STREET – CLAPPERTON STREET TO BERCZY STREET

31. Wellington Street between Clapperton Street and Berczy Street is a collector roadway with a pavement width of 10 metres and a sidewalk on the north side between Clapperton Street and Peel Street and on both sides between Peel Street and Berczy Street, please refer to Appendix "G".
32. Currently on-street parking is prohibited on both sides of Wellington Street between Clapperton Street and Berczy Street.
33. A Parking Questionnaire was prepared and mailed to 36 property owners on Wellington Street and surrounding roadways. Results of the Questionnaire are as follows:

PROHIBITED PARKING SURVEY	RESPONSES RECEIVED	PERCENTAGE OF RESPONSES
Option A - Leave current parking in place on Wellington Street.	8	80%
Option B - Implement a three (3) hour limit on the north side of Wellington Street between Clapperton Street and Berczy Street; 7:00 a.m. to 5:00 p.m. Monday to Friday excluding Statutory Holidays. Implement No Parking Anytime on the south side of Wellington Street between Clapperton Street and Berczy Street.	0	50%
Option C - Implement a three (3) hour limit on the south side of Wellington Street between Clapperton Street and Berczy Street; 7:00 a.m. to 5:00 p.m. Monday to Friday excluding Statutory Holidays. Implement No Parking Anytime on the north side Wellington Street between Clapperton Street and Berczy Street.	2	20%
TOTAL (36)	10	28%

34. Staff have reviewed implementing a three (3) hour parking limit on Wellington Street between Clapperton Street and Berczy Street and recommend leaving the current parking restrictions in place as Wellington Street is a transit route with higher traffic volumes and cannot support on-street parking.
35. Staff reviewed the feasibility of providing metred parking however it was determined that the introduction of metred parking would not deter long duration overflow parking and simply add to the burden of the local residents.
36. Staff will continue to monitor parking operations to evaluate the effectiveness of the amendments.
37. Barrie Police Service, Barrie Fire and Emergency Service and Municipal Law Enforcement do not oppose the recommended motion.

ENVIRONMENTAL MATTERS

38. There are no environmental matters related to the recommendation.

ALTERNATIVES

39. There is alternative available for consideration by General Committee:

Alternative #1

General Committee could maintain the current parking regulations on Berczy Street between Penetang Street and Wellington Street, Owen Street between Sophia Street and Wellington Street, Peel Street between Sophia Street and Wellington Street, and Sophia Street between McDonald Street and Peel Street.

This alternative is not recommended as it does not standardize the parking restrictions within the downtown core area. It also does not discourage long duration overflow parking.

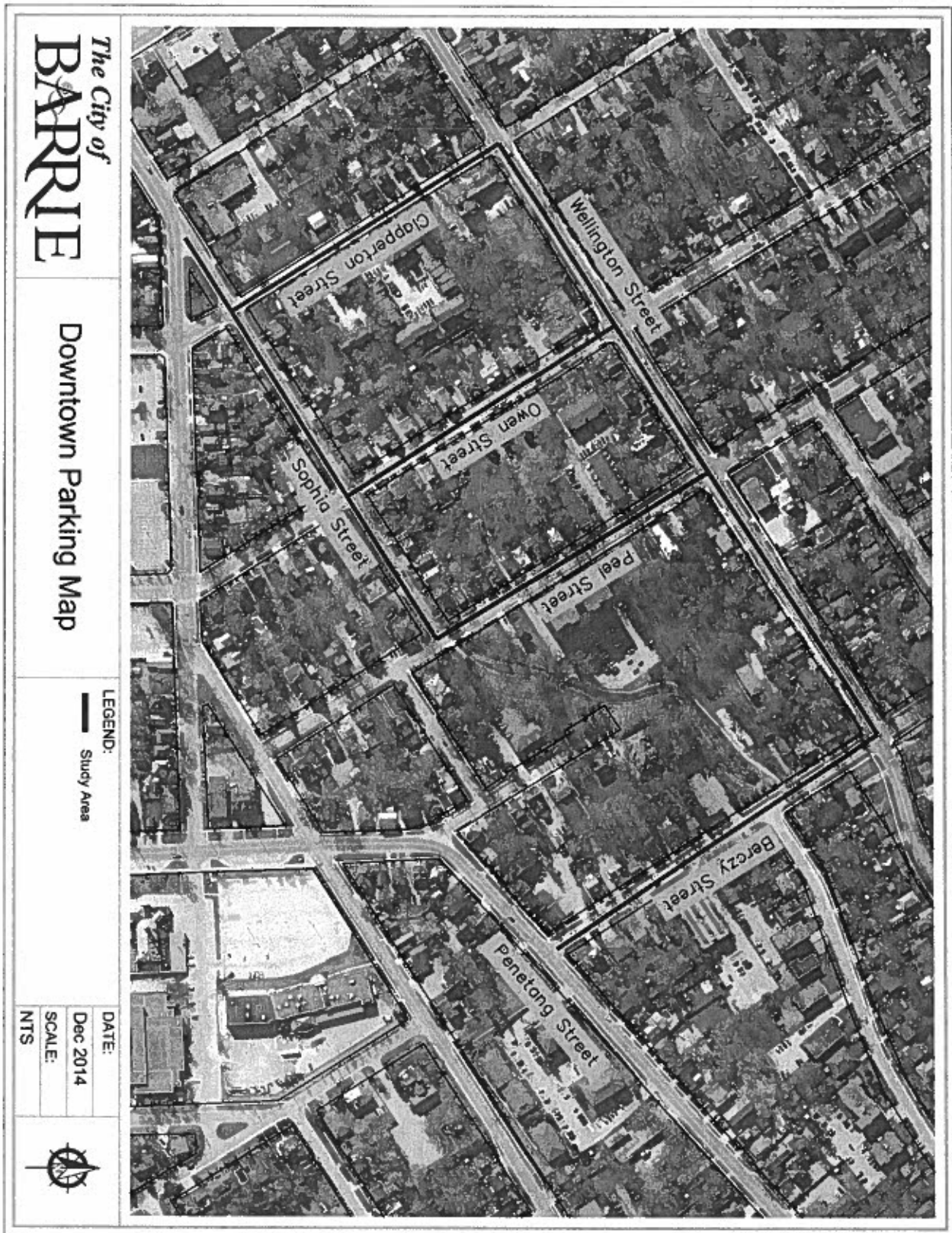
FINANCIAL

40. The cost to implement the three (3) hour parking limit on Berczy Street, Owen Street, Peel Street and Sophia Street would be approximately \$3,500 and could be accommodated within the 2014 Operating Budget.

LINKAGE TO COUNCIL STRATEGIC PRIORITIES

41. The recommendations included in this Staff Report are not specifically related to the goals identified in the 2010-2014 City Council Strategic Plan.

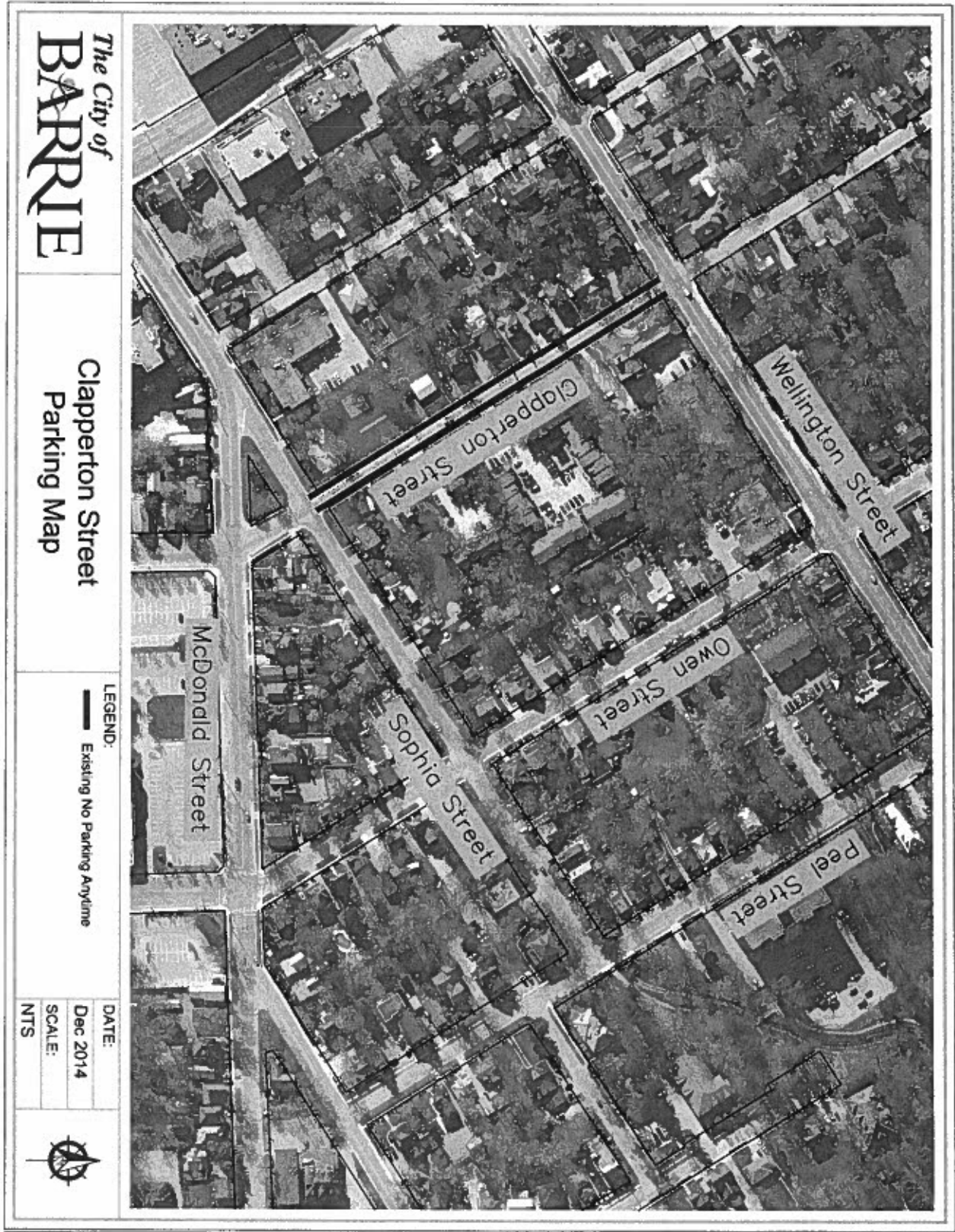
Appendix A



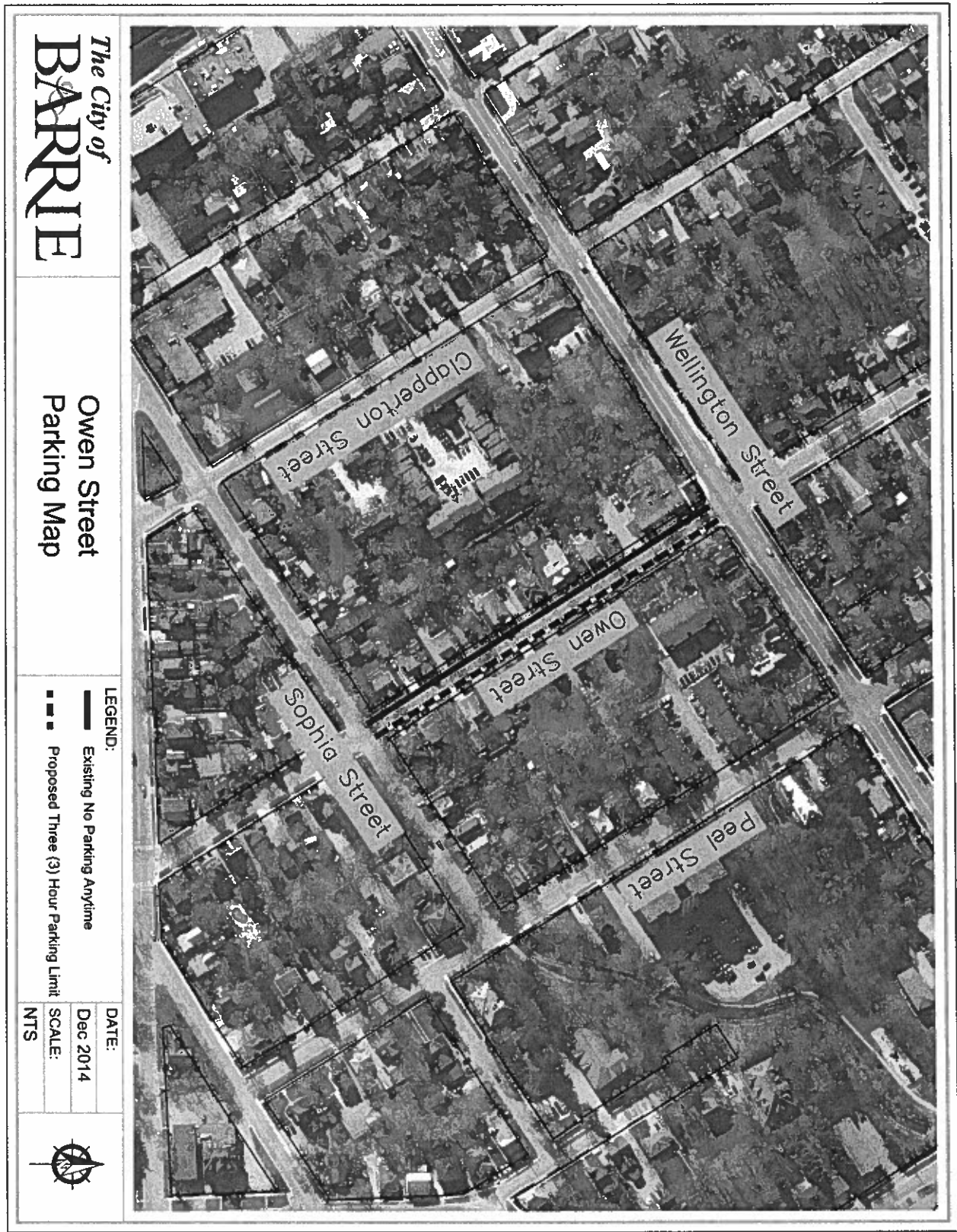
Appendix B



Appendix C



Appendix D



Appendix E



The City of
BARRIE

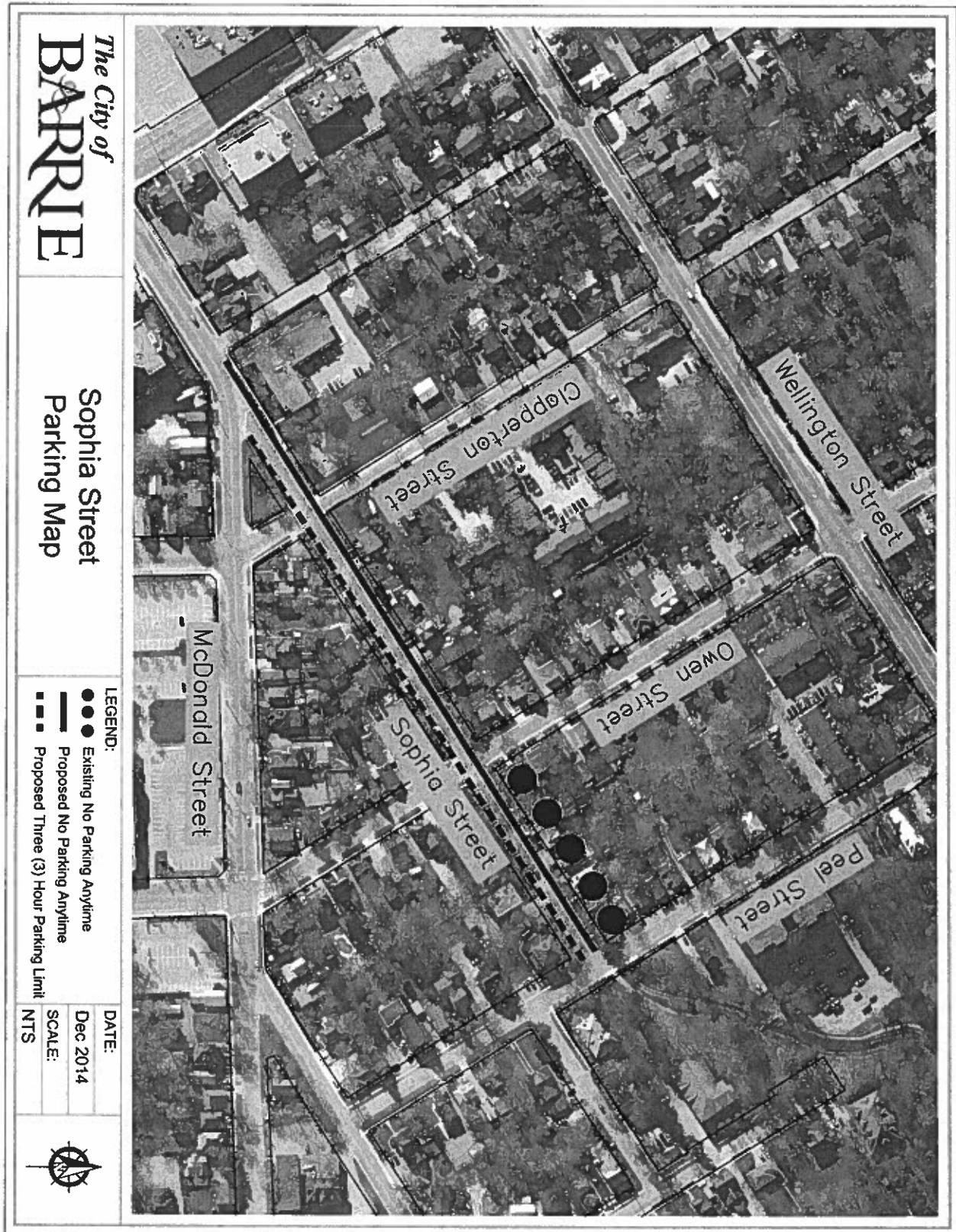
Peel Street
Parking Map

LEGEND:
 — Existing No Parking Anytime
 - - - Proposed Three (3) Hour Parking Limit

DATE:
Dec 2014
SCALE:
NTS



Appendix F



Appendix G

