



---

**TO:** INFRASTRUCTURE AND COMMUNITY INVESTMENT COMMITTEE

**SUBJECT:** OUTDOOR RACQUET SPORTS STRATEGY (APRIL 2024)

**WARD:** ALL

**PREPARED BY AND KEY CONTACT:** K. LILIENTHAL, OALA, RPP, LANDSCAPE ARCHITECTURAL PLANNER, PARKS PLANNING

**SUBMITTED BY:** K. BRADLEY, MLA, MANAGER OF PARKS PLANNING

**EXECUTIVE DIRECTOR APPROVAL:** M. BANFIELD, RPP, EXECUTIVE DIRECTOR OF DEVELOPMENT SERVICES

**CHIEF ADMINISTRATIVE OFFICER APPROVAL:** M. PROWSE, CHIEF ADMINISTRATIVE OFFICER

---

### **RECOMMENDED MOTION**

1. That the Outdoor Racquet Sports Strategy (April 2024), as identified in **Appendix "C"** in the Report to the Infrastructure and Community Investment Committee dated November 13, 2024, be approved in principle to guide the future planning, capital forecasting, and development of outdoor tennis and pickleball facilities within the City of Barrie.

### **PURPOSE & BACKGROUND**

#### Report Overview

2. The purpose of this Report is to recommend the approval in principle of the Outdoor Racquet Sports Strategy (ORSS), prepared by Monteith Brown Planning Consultants, related to the future planning and development of outdoor tennis and pickleball facilities within the City of Barrie.
3. The full ORSS can be found under Appendix "C" of the subject Report.
4. On March 7, 2022, City Council adopted Amendment #1 of Section "E" of the 22-G-042, regarding the Investigation to Construct Professional Grade Pickleball Courts Report to General Committee dated February 28, 2022, as follows:

"That an Outdoor Racquet Sports Strategy that would provide direction on outdoor pickleball and tennis recreation facilities across the City be included in the 2023 Capital Budget for Council's consideration".
5. A capital project intake form for the Outdoor Raquet Sport Strategy (ORSS) was submitted and approved in the 2023 Capital Plan.
6. In August 2023, City staff initiated a Request for Proposal (RFP) for consulting services to prepare the ORSS. The project was awarded September 2023 to Monteith Brown Planning Consultants.
7. As identified in the RFP, the project's scope of work was:

- 
- To identify outdoor tennis and pickleball interests and needs of Barrie residents through community engagement initiatives;
  - To identify best practices for the provision of outdoor tennis and pickleball facilities;
  - To conduct a detailed investigation regarding design and construction best practices for outdoor tennis and pickleball facilities, including supplementary amenities and related services;
  - To establish recommended levels of service of outdoor tennis and pickleball facilities in Barrie for the next ten (10) years;
  - To identify existing and anticipated gaps in service and to provide a range of recommendations to fulfil the identified gaps in service; and
  - To develop a high-level delivery plan for the next ten (10) years, including a high-level financial analysis to identify estimated budget requirements.
8. The ORSS is focused on outdoor tennis and pickleball facilities exclusively. Indoor (including domed) tennis and pickleball facilities are beyond the scope of the ORSS and will be evaluated as part of a future Recreation Master Plan, led by the Recreation and Culture Services Department.

### **ANALYSIS**

9. In reference to the City's 2023 Development Charges Background Study population projections, the City is expected to reach a population of 230,500 residents by 2036.
10. The COVID-19 pandemic resulted in the closure of multiple public recreation facilities between 2020 and 2022. Outdoor tennis and pickleball courts were one of the few outdoor recreation facilities that could be used while adhering to COVID-19 precautionary measures, such as social distancing.
11. Tennis Canada reported growth in the sport, particularly amongst the younger population, after the pandemic. Research from both Tennis Canada and Tennis Ontario suggests that tennis is experiencing a resurgence in popularity that can be attributed to a number of factors, such as a growing segment of populations seeking social and lower impact activities. Tennis growth in Canada can also be associated to the success of Canadians competing on a competitive/international level.
12. After the pandemic, many communities experienced high historical rates of interest and participation levels in pickleball. Pickleball is widely recognized as the fastest growing sport in Canada.
13. Several municipalities in the Greater Toronto and Hamilton Area are constructing dedicated outdoor pickleball facilities (such as Windsor and Richmond Hill) and conducting specialized outdoor tennis and pickleball studies (such as Vaughan and Ottawa), as populations increase and the demand for these recreational facilities continues to rapidly grow.
14. The City of Barrie ORSS consists of eight (8) sections as outlined below:
- Section 1 – Introduction: Overview of the strategy intent and approach to the strategy's development.

- Section 2 – Current Context: Summary of Barrie’s existing and projected community profile and demographics. This section also includes an overview of observed trends in outdoor tennis and pickleball in Canada, Ontario and Barrie.
- Section 3 – Community Engagement: Overview of the community engagement initiatives undertaken, including summaries of the findings.
- Section 4 – Supply and Utilization: Overview of the existing supply and utilization of the City’s outdoor tennis and pickleball facilities. This section also includes a benchmark analysis of other Ontario municipalities and their facility provision rates.
- Section 5 – Outdoor Tennis and Pickleball Court Design: Overview of best practices for the design and construction of tennis and pickleball facilities based on sporting governing bodies, such as Tennis Canada and Pickleball Canada, and other municipalities. This section also includes recommendations for levels of service related to design and construction for tennis and pickleball facilities located in neighbourhood, community, and regional level parks.
- Section 6 – Outdoor Tennis and Pickleball Court Rates and Fees: High-level overview of existing Barrie outdoor racquet court rental rates and fees.
- Section 7 – Outdoor Tennis and Pickleball Court Needs Assessments: Introduction of the recommended levels of service targets related to quantity and geographical distribution for outdoor tennis and pickleball courts in Barrie. This section further includes an overview of the service and gap analysis findings and recommendations to fulfil the identified gaps in service levels.
- Section 8 – Implementation Strategy: Summary of all strategy recommendations that are organized into short, medium and long-term time horizons. The implementation strategy is supplemented by a high-level financial analysis to identify estimated budget requirements.

Community Engagement

15. In efforts to increase the project awareness and overall public participation, staff developed a comprehensive community engagement plan that focused on:
- Inclusiveness - Participation of all interest holders (of all ages and abilities);
  - Transparency - Providing clear and accurate project information;
  - Willingness to learn – Encouraging interactive discussions to enhance mutual understanding and respect between the City, consultants, interest holders, and the general public.
16. The community engagement plan consisted of a diverse range of opportunities for the Barrie community to provide their insights, interests and needs as related to outdoor tennis and pickleball facilities. The following community engagement initiatives were undertaken:

Engagement Initiative	Description	Engagement Metrics
Online Project Webpage (buildingbarrie.ca)	<ul style="list-style-type: none"> <li>• Online engagement portal to inform residents of the project, how to get involved, and how to provide input</li> </ul>	Approximately 2000 visits as of September 2024

Public Online Survey	<ul style="list-style-type: none"> <li>The survey provided residents the opportunity to share information about their skill level, sport participation, preferences, satisfaction levels, and suggestions for potential enhancements to existing courts or where new courts should be considered</li> <li>The survey was open from October 10 to November 10, 2023 (approximately one (1) month)</li> </ul>	486 survey responses over one (1) month
In-person “Pop-up” Information Sessions	<ul style="list-style-type: none"> <li>Seven (7) events were held at select community parks and community centres to raise awareness of the project, promote the survey, and to engage with the public</li> <li>The public were able to speak directly with staff, participate in a trivia game, and/or participate in a colouring activity.</li> <li>Events took place at: <ul style="list-style-type: none"> <li>Painswick Park (x2)</li> <li>Lampman Lane Park</li> <li>Eastview Community Park</li> <li>East Bayfield Community Centre</li> <li>Peggy Hill Team Community Centre</li> <li>Parkview Centre</li> </ul> </li> </ul>	Directly interacted with approximately 1,200 residents over the course of seven (7) sessions
Colouring Activity (for children 12 and under)	<ul style="list-style-type: none"> <li>To engage youth, a colouring activity was available for children age twelve and under at the information pop-ups and online</li> <li>The colouring activity involved “designing” your own tennis racquet or pickleball paddle and ball</li> <li>Eligible participants were entered into a draw for a beginner pickleball or tennis set</li> </ul>	108 submissions over one (1) month
Sports User Group Workshop	<ul style="list-style-type: none"> <li>An in-person workshop was held to learn about community outdoor tennis and pickleball user groups, trends they are experiencing, concerns, and potential solutions to address any identified service level gaps</li> </ul>	Connected with representatives of five (5) Barrie based pickleball, tennis, and school user groups
Presentation to the Seniors and Accessibility Advisory Committee (SAAC)	<ul style="list-style-type: none"> <li>Staff attended a SAAC meeting to provide an overview presentation of the ORSS and held a discussion period</li> <li>SAAC members were provided with a list of guiding questions prior to the meeting to assist with the discussion</li> </ul>	Comments provided in-person and via e-mail to staff
General Promotions	<ul style="list-style-type: none"> <li>Social media advertisements (Facebook, Instagram, Twitter/X)</li> <li>Media releases (Simcoe.com and BarrieToday)</li> <li>Radio advertisements</li> <li>On-site signage at parks</li> </ul>	---

Outdoor Racquet Sports Strategy Recommendations

- 17. The ORSS recommendations were established based on a detailed review of community feedback, sport industry best practices, and leading practices in comparative municipalities within Ontario.
- 18. Section 5.0 of the ORSS includes a detailed review and analysis of outdoor tennis and pickleball facilities design standards and associated supporting amenities. Please see Table 12 included below, which can be found on page 34 of the ORSS, for a high-level summary of the recommended facility design standards and applications:

City of Barrie Outdoor Racquet Sports Strategy

TABLE 12: SUMMARY OF OUTDOOR TENNIS AND PICKLEBALL COURT DESIGN GUIDELINES

Park Type	Tennis Courts		Pickleball Courts	
	Neighbourhood Parks	Community and Regional Parks	Neighbourhood Parks	Community and Regional Parks
Type of Play	Beginner, recreational	Beginner/recreational/ club/league/programming	Beginner, recreational	Beginner/recreational/ club/league/programming
Court Dimensions	ITF standard (preferred)	ITF standard	Standard for competitive play as per USAPA	Standard for competitive play and elite/wheelchair play as per USAPA
Number of Courts	2 maximum	2 minimum	2 maximum	2 minimum / 4 preferred
Residential Setbacks and Noise Mitigation	Unlit courts: 15 meters	Unlit courts: 15 metres Lit courts: 30 metres or 20 metres if abatement strategies are used (e.g., landscape screening)	50 metres with noise abatement measures such as noise dampening screening, landscaping, berms, acoustic paneling, or other strategies	75 to 100 metres or more depending on the number of courts being constructed and noise abatement measures being used such as noise dampening screening, landscaping, berms, acoustic paneling, or other strategies
Court Surface	Asphalt	High contrast acrylic coating	Asphalt	High contrast acrylic coating
Pathways	Paved pathways designed to accommodate persons with disabilities		Paved pathways designed to accommodate persons with disabilities	
Lighting	Optional	Yes (dark sky compliant with a sharp lighting cutoff)	No	Yes
Electrical Supply	No	Yes	No	Yes
External Fencing and Gates	Full backstop and partial sidestop fencing	Full backstop and sidestop fencing	Full backstop and partial sidestop fencing	Full backstop and sidestop fencing
Internal Fencing	No	No	Optional full or low height	Full or low height
Shade Structures	No	Optional	No	Optional
Seating	Yes	Yes and consider tiered-spectator seating and accessible viewing	Yes	Yes and consider tiered-spectator seating and accessible viewing
Washrooms	No	Yes	No	Yes
Windscreens	Optional – Court user to provide		Optional – Court user to provide	
Drinking Fountains and Water Filling Stations	Optional	Yes	Optional	Yes
On-Site Parking	No	Yes	No	Yes
Indoor Meeting Space	No	Optional	No	Optional

- 19. As of 2023, the City of Barrie’s outdoor tennis facility level of service is comparable with the average residents per court of comparable Ontario municipalities with a ratio of 1:5,088 as compared to the comparator average 1:4,968. Please refer to Table 2: 2023 Service Level Comparison, Outdoor Tennis Courts below for reference:

**TABLE 2: 2023 SERVICE LEVEL COMPARISON, OUTDOOR TENNIS COURTS**

	2021 Census		Tennis Courts (public/club)			Residents Per Court
	Population		Dedicated	Shared	Total	
Vaughan	323,103		100	30	130	2,485
Windsor	229,660		13	22	35	6,562
Oakville	213,759		28	30	58	3,686
Richmond Hill	202,000		89	4	93	2,172
Burlington	186,948		31	5	36	5,193
Oshawa	175,400		15	8	23	7,626
Whitby	138,501		33	0	33	4,197
Milton	132,979		3	14	17	7,822
<b>Average</b>						<b>4,968</b>
Barrie	167,910	(2024 Estimate)	28	5	33	5,088

20. As of 2023, the City of Barrie’s outdoor pickleball facility level of service surpassed the identified average residents per court of comparable Ontario municipalities with a ratio of 1:6,458 compared to the average 1:10,439. Please refer to Table 6: 2023 Service Level Comparison, Outdoor Pickleball Courts below for reference:

**TABLE 6: 2023 SERVICE LEVEL COMPARISON, PICKLEBALL COURTS**

	2021		Pickleball Courts (public/club)			Residents Per Court
	Population		Dedicated	Shared	Total	
Vaughan	323,103		0	30	30	10,770
Windsor	229,660		10	22	32	7,177
Oakville	213,759		11	30	41	5,214
Richmond Hill	202,000		12	4	16	12,625
Burlington	186,948		5	5	10	18,695
Oshawa	175,400		4	8	12	14,617
Whitby	138,501		21	0	21	6,595
Milton	132,979		3	14	17	7,822
<b>Average</b>						<b>10,439</b>
Barrie	167,910	(2024 Estimate)	19	7	26	6,458

Note: Dedicated pickleball court supply includes future multi-pickleball court complexes planned in Whitby. Excludes future multi-pickleball court complex in Vaughan as the number of planned courts is currently unknown.

21. Both outdoor tennis and pickleball facilities are recommended to be provided at a rate of one per 5,000 residents with a 1-kilometre radius service area. To meet this provision level, the City will need to construct thirteen (13) new tennis courts and twenty (20) new pickleball courts by 2036.

22. The tables below provide a summary of recommendations for the provision of new courts by area of the City as identified in Section 8.2: Outdoor Tennis and Pickleball Court Needs Assessment Recommendations on pages 73 through 75 of the ORSS:

<b>Outdoor Tennis (13 New Courts by 2036)</b>				
General Location	Park Type	Type of Court	# of Courts	Timing*
Hewitt's Secondary Plan Area	Community	Dedicated	2	Medium to Long
	Neighbourhood	Dedicated	2	
	Neighbourhood	Dedicated	2	
Salem Secondary Plan Area	Neighbourhood	Dedicated	1	Medium to Long
	Neighbourhood	Dedicated	2	
Holly Community Area (West of Highway 400, north of Mapleview Drive West, and south of Ardagh Road)	Community OR Neighbourhood	Dedicated	2	Short
Queen's Park	Community	Dedicated	2	Short with Long Term implementation

<b>Outdoor Pickleball (20 New Courts by 2036)</b>				
General Location	Park Type	Type of Court	# of Courts	Timing*
Hewitt's Secondary Plan Area	Community	Dedicated	4	Medium to Long
	Neighbourhood	Dedicated	2	
	Neighbourhood	Dedicated	2	
Salem Secondary Plan Area	Neighbourhood	Dedicated	2	Medium to Long
	Neighbourhood	Dedicated	2	
	Neighbourhood	Dedicated	2	
Holly Community Area (West of Highway 400, north of Mapleview Drive West, and south of Ardagh Road)	Community OR Neighbourhood	Dedicated	2 to 4	Short
Northwest Barrie (North of Dunlop Street West and east of Anne Street North)	Neighbourhood	Dedicated	2	Short

\* **Short Term – 2024 to 2027**      **Medium Term – 2028 to 2031**      **Long Term – 2032 to 2034+**

23. Figures 21 and 22 of the ORSS provide maps illustrating the existing and proposed distributions of outdoor tennis and pickleball facilities (please see Appendix "A" and "B" as attached to the report). The mapping includes contextual information, such as 2036 projected population distribution and areas designated as commercial/employment areas.
24. The capital cost to construct the total number of courts recommended in the ORSS are estimated to range from \$1,715,000 to \$2,070,000 for outdoor tennis facilities and \$1,665,000 to \$1,965,000 for outdoor pickleball facilities.
25. The estimated high-level capital costs for the construction of new tennis and pickleball courts are preliminary estimates that are inclusive of hard and soft costs for the design and construction of standard neighbourhood and community level outdoor tennis and pickleball facilities. The capital costs are in current year (2024) dollar values and will be required to be escalated to the mid-point of construction of any proposed project in the City's capital budget.
26. Hard costs include general site preparation, court construction, and basic supporting amenities, such as lighting (as needed), fencing, site furnishing, and immediate pathway connections related

to the facility. Soft costs include site surveys, contingency, consulting fees, contract administration fees, and project management costs.

27. The cost estimates **exclude** land acquisition, enhanced supporting amenities (e.g. washroom facilities, lighting where lighting is not a standard base level of service, etc.), extensive park pathway connections, permits, tax, or any unforeseen site development costs associated with substructures or geotechnical constraints.
28. The cost estimates do not include the ongoing maintenance costs for repairs and full lifecycle renewal that are to be considered through the City's annual budget process.

Capital Planning and Forecasting

29. The Outdoor Racquet Sports Strategy will guide the balanced provision, timing, capital cost forecasting, and design of outdoor tennis and pickleball facilities in the City of Barrie.
30. Implementation of the ORSS recommendations will be dependent upon Council and community priorities, capital funding availability, and staff resources to deliver the projects and to operate them following construction. The implementation plan will be reviewed annually as part of the City's business plan development to reassess the priority and feasibility of new outdoor tennis or pickleball facility development projects.
31. As associated with the Secondary Plan Area Master Parkland Agreements and the previous recommendations of the 2019 Outdoor Recreation Facility Study, the following new outdoor tennis and pickleball facilities have been forecasted and confirmed in the Hewitt's and Salem Secondary Plan Areas:

Anticipated Year of Construction	Secondary Plan Area	Location	Forecasted Outdoor Court Facilities	Status
2025	Hewitt's	Neighbourhood Park (17H)	<ul style="list-style-type: none"> <li>• 1 dedicated tennis court</li> <li>• 2 dedicated pickleball courts</li> </ul>	Design in Progress
2030		Neighbourhood Park (8H/9H)	<ul style="list-style-type: none"> <li>• 1 dedicated tennis court</li> <li>• 2 dedicated pickleball courts</li> </ul>	Pending Construction
2025	Salem	Neighbourhood Park (5S)	<ul style="list-style-type: none"> <li>• 1 dedicated tennis court</li> <li>• 2 dedicated pickleball courts</li> </ul>	Design in Progress
2026		Neighbourhood Park (7S)	<ul style="list-style-type: none"> <li>• 1 dedicated tennis court</li> <li>• 2 dedicated pickleball courts</li> </ul>	Design in Progress

32. Additional neighbourhood and community level outdoor tennis and pickleball facilities are forecasted within the Hewitt's and Salem Secondary Plan areas, pending confirmation of parkland acquisition and subject to the schedules of associated subdivision developments.
33. The forecasted 2025 and 2026 neighbourhood park projects identified above are in alignment with the ORSS' recommendations to provide new dedicated tennis and pickleball facilities within the Hewitt's and Salem Secondary Plan Areas (refer to Paragraph 22).



34. The following outdoor tennis and pickleball projects have been forecasted to the year 2026 as part of the City’s Annual Play Court Construction and Rehabilitation Program (Active):

Year	Park Location	Scope of Work	Budget
2025	Eastview Community Park	<ul style="list-style-type: none"> <li>Rehabilitation of four (4) existing dedicated tennis courts (Community Level)</li> <li>Lighting of the existing pickleball court facility</li> </ul>	\$375,000 (requested)
2026	Holly Community Park	<ul style="list-style-type: none"> <li>Conversion and relocation of existing basketball court</li> <li>Design and construction of dedicated tennis and pickleball courts (community level)</li> </ul>	\$1,200,000 (forecasted)
	Victoria Woods Park	<ul style="list-style-type: none"> <li>Design and construction of four (4) dedicated pickleball courts (community level)</li> </ul>	

35. In preparation of the 2026 capital budget and the corresponding 10-year capital plan, the recommendations included in the ORSS will be used to forecast the Play Court Construction and Rehabilitation Program to the year 2035.
36. In the existing 10-year capital plan, the forecasted 2026 Holly Community Park project is in alignment with the ORSS’ short-term recommendation to provide new dedicated tennis and pickleball facilities within the Holly Community (refer to Paragraph 22). This project is recommended by staff to receive funding to fulfil two existing gaps in service.
37. In the existing 10-year capital plan, the forecasted 2026 Victoria Woods Park project is in alignment with the ORSS’ short-term recommendation to provide new dedicated pickleball facilities in the northwest area of Barrie (refer to Paragraph 21). This project is recommended by staff to receive funding to fulfil an existing gap in service.

Operations and Maintenance Cost Impacts

38. As indicated by Parks and Forestry Operations, the current cost of maintaining the fifty-one (51) existing tennis and pickleball courts is \$75,500 per year, or an average of \$1,480 per court per year. This cost does not include maintenance of other potential supporting amenities (e.g. lighting, bottle filling stations, seating, pathway and parking lot maintenance) or tournament support.
39. Tennis and pickleball courts are opened in the spring after the last anticipated freeze up (surface ice), generally by mid-late April and are closed in the late fall (end of October). The courts are inspected prior to opening, any surface repairs made, netting installed, posts, fences and signs checked to ensure all are in good repair and made ready for use. Summer inspections and maintenance include netting repair, graffiti removal, sign replacements, fence and gate repairs, blowing off surfaces to remove dust and dirt, power-washing where necessary, checking lights and timers, repairing benches and general litter and clean-up around the court. A summary of standard maintenance practices for outdoor tennis and pickleball facilities and associated costs can be found under Section 8.0 Implementation Strategy, Table 14 on page 68 of the ORSS.

---

## **ENVIRONMENTAL AND CLIMATE CHANGE IMPACT MATTERS**

40. The following have been considered in the development of the Outdoor Racquet Sports Strategy, in relation to environmental and climate change impact matters:
- a) **The City of Barrie Climate Change Adaptation Strategy**: As part of the Climate Change Adaptation Strategy, access to drinking water on public property is one of many cooling strategies. The ORSS provides recommendation for the incorporation of water bottle filling stations at community and regional level parks and to be considered on a case-by-case basis at neighbourhood level parks, subject to availability/feasibility of water servicing.
  - b) **City of Barrie Climate Change Emergency – Climate Change Mitigation Plan**: As per Section 5.4.5 Electrical Supply of the ORSS, general consultation with the City's Corporate Facilities Department is recommended to explore options for electrical servicing in alignment with the City's Climate Change Mitigation Plan and the GHG emissions target of net zero by 2050.
  - c) **City of Barrie Lighting Policy**: In alignment with the City's Lighting Policy, LED luminaires are recommended for tennis and pickleball court lighting as a low energy consumption lighting option.
  - d) **City of Barrie Urban Forestry Strategy**: In alignment with the vision of goals of the Urban Forestry Strategy to increase and enhance the City's tree canopy, the ORSS provides recommendation (under Section 5.4.7 Shade Structures on page 48) for the strategic use of tree plantings as an alternative shade option associated with outdoor tennis and pickleball facilities.

## **ALTERNATIVES**

41. The following alternatives are:

**Alternative #1** The Infrastructure and Community Investment Committee could maintain the existing reference to the 2019 Outdoor Recreation Facility Study (OFS) for guidance for outdoor tennis and pickleball facilities in the City.

This alternative is not recommended as the Outdoor Racquet Sports Strategy is a focused study on outdoor tennis and pickleball needs and has undergone extensive public and stakeholder consultation. The OFS was a high-level assessment of all outdoor recreation facilities and did not include extensive community consultation or interest-holder engagement, particularly regarding pickleball. At the time of the OFS, there was limited data regarding the provision of outdoor pickleball facilities. The ORSS includes new benchmarking information to compare the provision rates of outdoor pickleball facilities across comparable municipalities in Ontario. The ORSS also includes detailed assessments and recommendations for the design and construction specifications for outdoor tennis and pickleball facilities, that have not been captured in the OFS.

**FINANCIAL**

- 42. There are no immediate financial implications for the Corporation resulting from the subject Staff Report recommendation for the approval in principle of the Outdoor Racquet Sports Strategy as the Annual Play Court Construction and Rehabilitation Program is approved annually by Council in the City’s capital budget.
- 43. Future decisions regarding capital and operating expenses, related to outdoor tennis and pickleball facilities, are to be considered during the development of the annual business plan, with reference to the recommendations provided in the ORSS.

**LINKAGE TO 2022-2026 STRATEGIC PLAN**

- 44. The Outdoor Racquet Sport Strategy supports the following goals identified in the 2022-2026 Strategic Plan:

Goal	Outdoor Racquet Sports Strategy
<p><b>Thriving Communities</b></p> <ul style="list-style-type: none"> <li>• Champion equity, diversity, and inclusion</li> <li>• Create and foster programs and opportunities to support community wellness</li> <li>• Expand and maximize access to parks and recreation opportunities</li> </ul>	<p>The City of Barrie is committed to continuous improvement and works towards providing the public with inclusive, diverse, and safe opportunities for outdoor recreation, including racquet sports such as outdoor tennis and pickleball.</p> <p>Both tennis and pickleball are accessible sports, with relatively low costs for participation and suitable to be played by all ages and abilities, including persons with mobility limitations.</p> <p>The ORSS provides the City with guidance on how to improve outdoor tennis and pickleball facilities and access to them.</p>
<p><b>Infrastructure Investments</b></p> <ul style="list-style-type: none"> <li>• Support active transportation and pedestrian connections</li> <li>• Implement <a href="#">climate action plans</a></li> </ul>	<p>The ORSS was developed in consultation with the City’s Seniors and Accessibility Advisory Committee. The implementation of accessible pathway connections to and from outdoor tennis and pickleball facilities, in alignment with the City’s construction standards and the Accessibility for Ontarians with Disabilities Act (AODA). Further information can be found under Section 5.4.3 Pathways of the ORSS.</p> <p>Please refer to Paragraph 40 of this Staff Report for information regarding the ORSS and the City’s climate action plans.</p>
<p><b>Responsible Governance</b></p> <ul style="list-style-type: none"> <li>• Support the services our community needs while keeping tax increases low</li> <li>• Maintain focus on city core services</li> <li>• Financial stewardship which includes finding efficiencies and innovation</li> <li>• Ensure accountability and transparency</li> </ul>	<p>The ORSS is intended to guide the sustainable delivery of outdoor tennis and pickleball courts in Barrie for the next ten years.</p> <p>The ORSS’ consultation process was developed to align with the City’s community engagement guiding principles, such as inclusiveness, transparency, accessibility, and more. The Community Engagement Strategy can be found under section 3.1 of the ORSS.</p>

**ATTACHMENTS**

Appendix "A" – ORSS Figure 21: Recommended Tennis Court Strategy (Map)

Appendix "B" – ORSS Figure 22: Recommended Pickleball Court Strategy (Map)

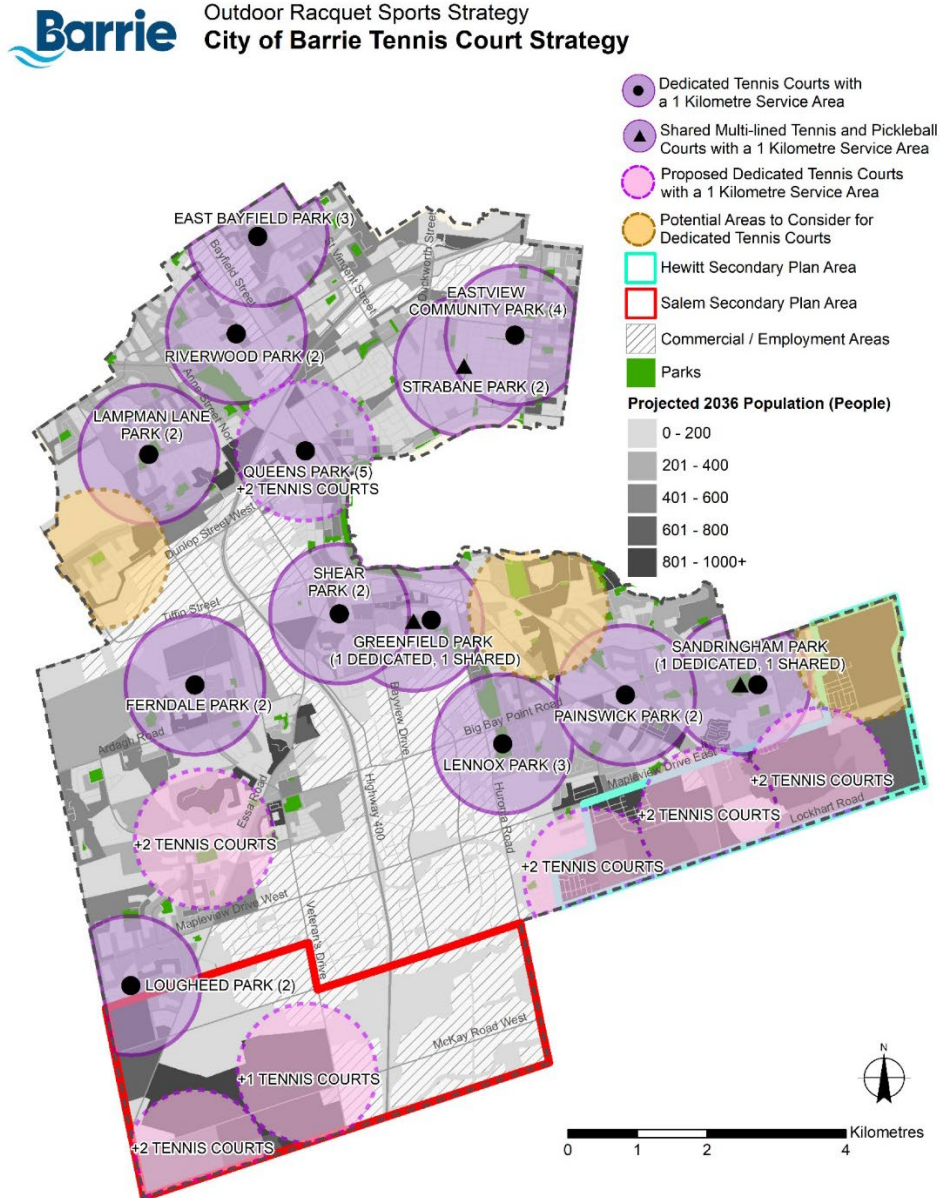
Appendix "C" – Outdoor Racquet Sports Strategy (April 2024)

APPENDIX "A"

**ORSS Figure 21: Recommended Tennis Court Strategy (Map)**

City of Barrie Outdoor Racquet Sports Strategy

FIGURE 21: RECOMMENDED TENNIS COURT STRATEGY

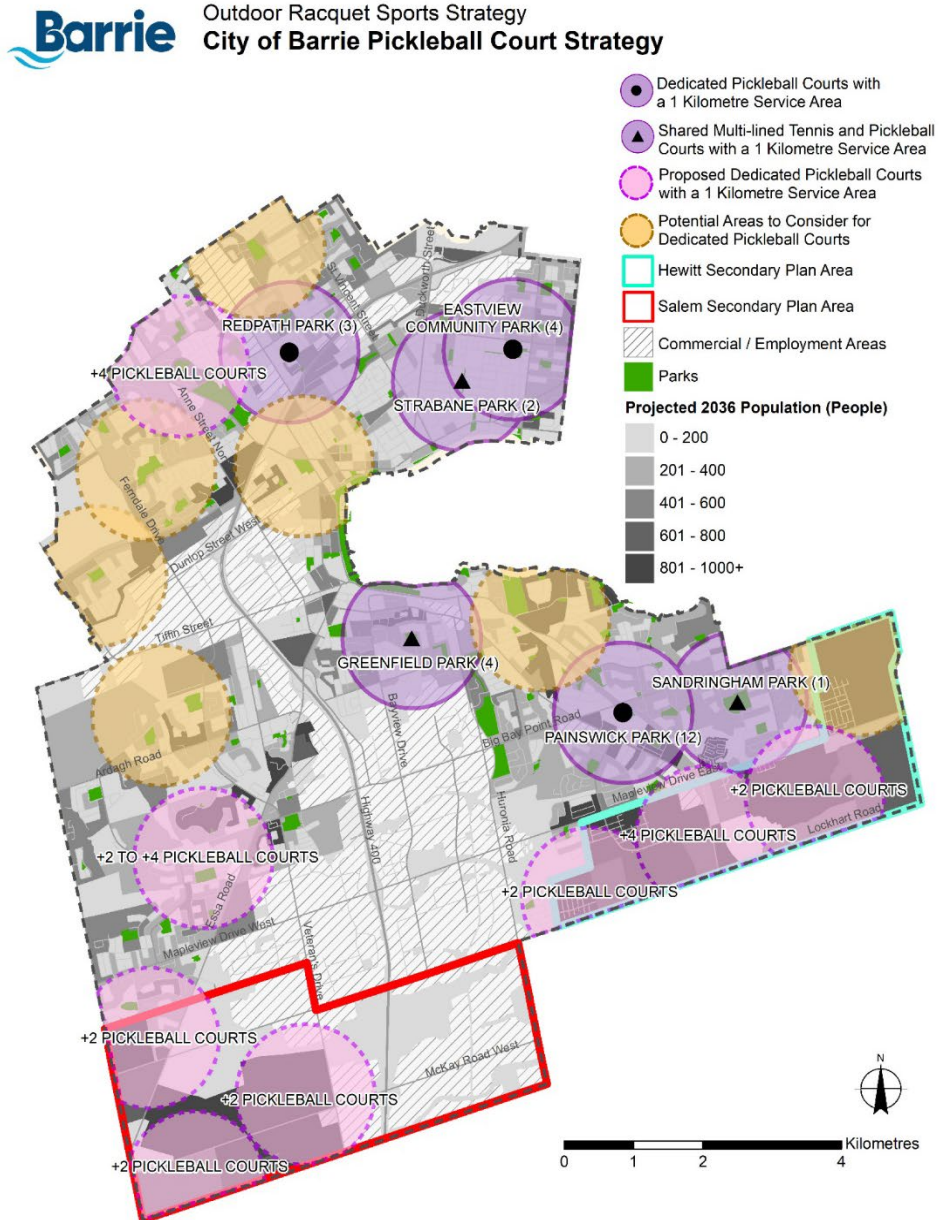


APPENDIX "B"

**ORSS Figure 22: Recommended Pickleball Court Strategy (Map)**

City of Barrie Outdoor Racquet Sports Strategy

FIGURE 22: RECOMMENDED PICKLEBALL COURT STRATEGY





---

**APPENDIX "C"**

**Outdoor Racquet Sports Strategy (April 2024)**

**SEPARATE DOCUMENT ATTACHED**