

CITY OF BARRIE

# CLIMATE CHANGE ADAPTATION STRATEGY



# Extreme Events



Dunlop at Kidds Creek, June 9, 2005



High Winds, June, 2014



Photo: Flooding Lakeshore June 24, 2014.



Ice Storm, March, 2016



# Vision & Mission

## VISION

Barrie will adapt to changing climate conditions and embrace new opportunities to remain a vibrant, healthy, and sustainable waterfront community.

## MISSION

The City of Barrie will demonstrate leadership by taking progressive and innovative steps to achieve the vision of the Climate Change Adaptation Strategy. We have a responsibility to anticipate and prepare for potential impacts of climate change on our community. The City is committed to taking action in the face of uncertainty.



# Introduction

- Adaptation Planning began June 2016
- Purpose: Reduce the risks climate change poses to Barrie's physical, economic, social, and ecological systems
- Developed through extensive consultation with municipal staff, community stakeholders/experts, and the general public
- Final Strategy contains 59 actions the City can or is already taking to adapt to climate change



# Barrie's Commitment to Climate Change

- Barrie has already taken several measures to become more sustainable:
  - Joining the Partners for Climate Protection in 2001
  - Green House Gas Inventory and Community Energy Plan (2006)
  - “Energy Management Plan (2012-2017).
  - “Save Adam” Energy Awareness Program
  - Adoption of LEED silver as a standard for new buildings
  - Solar Panels on Operations Centre Roof, etc.
- Responding to climate change is a two-part approach



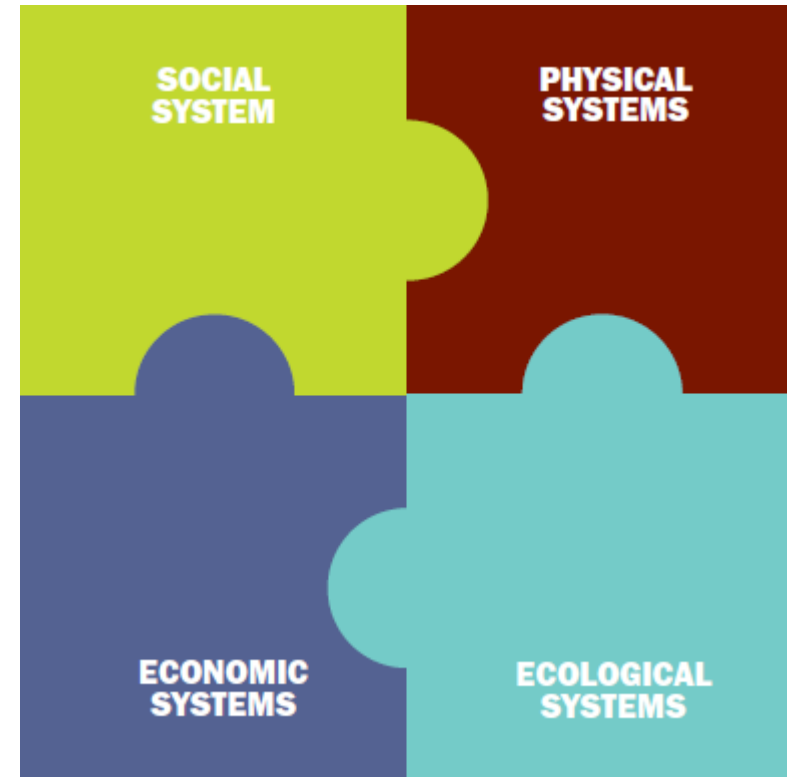
# Climate Adaptation 101

- Mitigation – addresses the *root causes* of climate change by reducing greenhouse gas emissions
- Adaptation – addresses the *symptoms* by reducing the risks posed by the impacts of climate change. Some examples of adaptation actions include:
  - Control of invasive species
  - Increasing permeable pavement
  - Water conservation initiative
  - Upgrading infrastructure
  - Emergency response planning, etc.



# Systems Thinking Approach

- Climate change impacts will be cumulative and synergistic
- They will affect physical, social, economic and ecological systems
- Interconnectivity - change in one area of a system can adversely affect another area
- Majority of services and stakeholders will be directly or indirectly affected by climate change



# Principles of Climate Change Adaptation

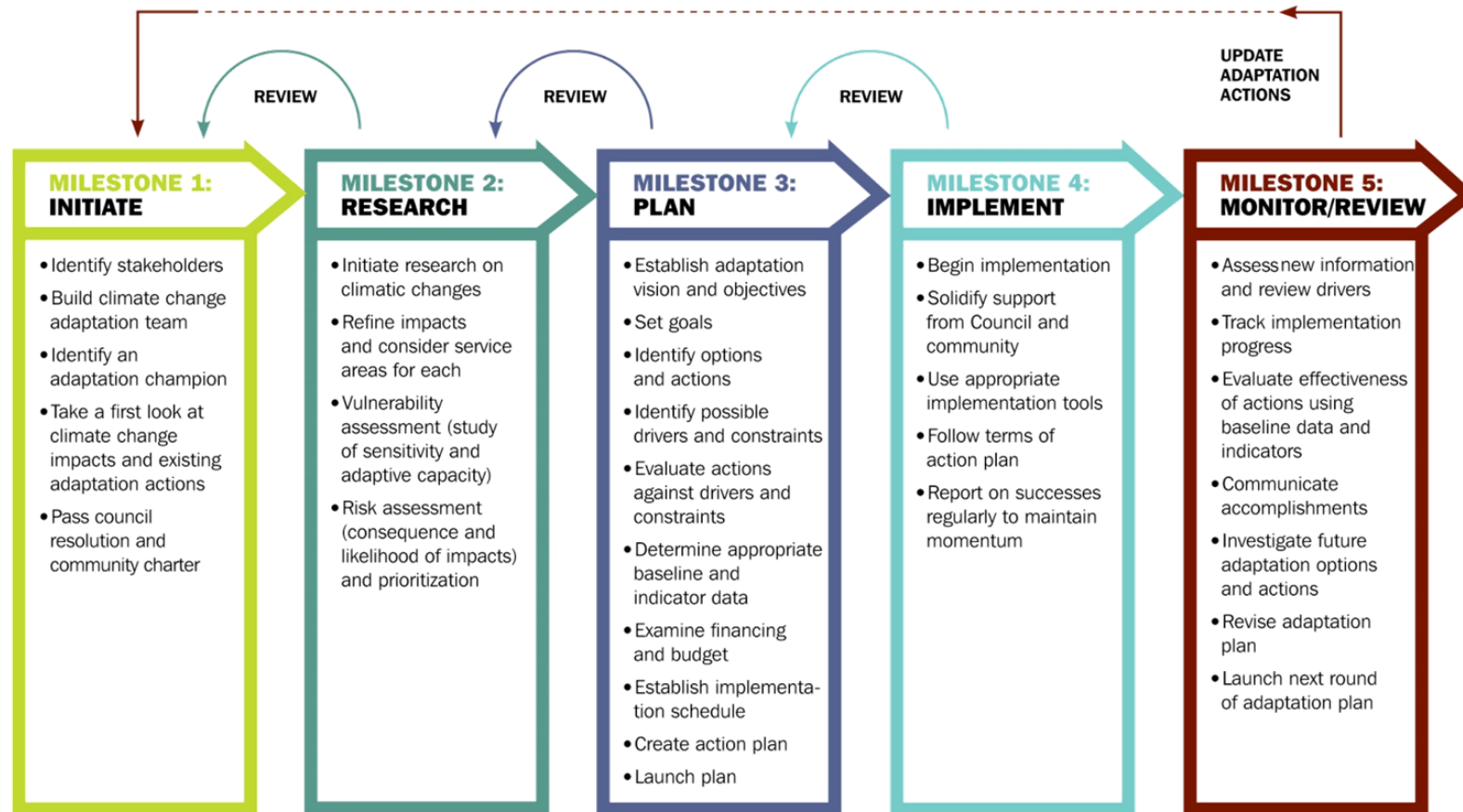
- Balance of immediate and long-term needs
- Interaction must be supplemented with action
- Commitment to act in the face of uncertainty
- Recognize existing work





# Five Milestone Program

- National program for Canadian communities



# Planning Team

- Project Team
  - Lead the development of the Adaptation Strategy
  - Provided research and consultation
- Adaptation Team
  - Core group contributing to the adaptation planning effort
  - Provided overall strategic direction for the project.
- Stakeholder Advisory Group
  - Provided sector-specific knowledge, input, and advice from a community perspective



# Goals Overview

Cross cutting actions

Goal 1: Maintain Public Health and Safety

Goal 2: Minimize Risks to Buildings and Properties

Goal 3: Strengthen Infrastructure Resilience

Goal 4: Help Local Businesses and the Tourism Industry Adapt to Changing Conditions

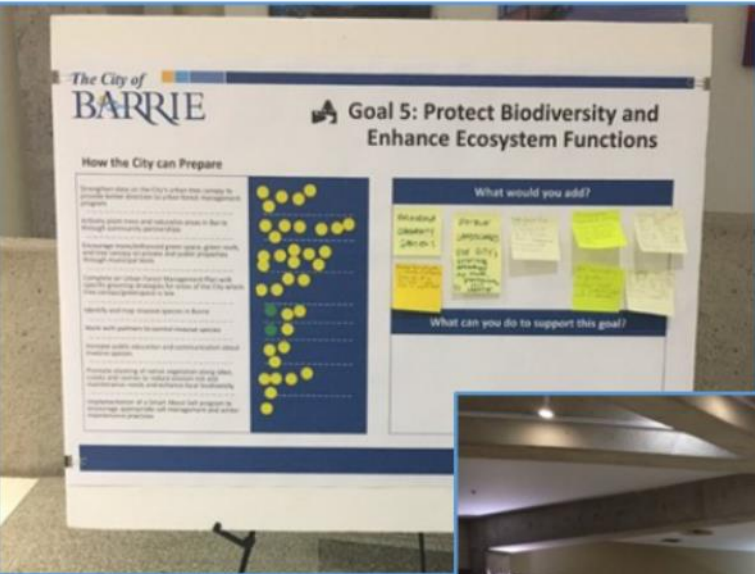
Goal 5: Protect Biodiversity and Enhance Ecosystem Functions

Goal 6: Minimize Disruption to Community Services

Goal 7: Build Community Resilience



# Public Consultation Feedback



- Summer “Pop-Up” Sessions
- December 7, 2016- Public Open House
  - 35 Attendees,
  - Sticky notes, and dots to obtain feedback
  - Public ranked greening initiatives, and those that linked closely to mitigation as high priority
- On-line Consultation- December 2016
  - 5 Responses
- 9 New Action added



# Implementation Planning- Guiding Principles

**Sustainable-** enhance mitigation efforts, and never be maladaptive

**Effective-** prioritize actions that are plausible for a wide range of future scenarios

**Integrated-** actions should contribute to other goals and/or programs in the community

**Inclusive-** involve multiple departments, stakeholders, and community partners

**Iterative-** informed, adjusted or refined as new information becomes available



# Next Steps

- Work towards Milestones 4- Implement & 5- Monitor and Review
- Develop Implementation Plan
- Continue working with Health Unit and Conservation Authorities on their Strategies
- Application to Municipalities for Climate Innovation Program Grants
- Plan to update and Climate Change Adaptation Strategy every 5 years
- Annual Implementation update to Council planned once implementation begins





