



## **ROADS, PARKS AND FLEET MEMORANDUM**

Page: 1  
File:  
Pending #:

---

**TO: MAYOR J. LEHMAN, AND MEMBERS OF COUNCIL**

**FROM: D. FRIARY, DIRECTOR OF ROADS, PARKS AND FLEET**

**NOTED: A. MILLER, RPP  
GENERAL MANAGER OF INFRASTRUCTURE AND GROWTH MANAGEMENT  
  
M. PROWSE, CHIEF ADMINISTRATIVE OFFICER**

**RE: 2019 SIGN DESIGN CHALLENGE**

**DATE: JULY 09, 2019**

---

The purposed of the memorandum is to inform members of Council regarding the results of the 2019 Sign Design Challenge as part of Public Works Week.

The Sign Design Challenge was a City of Barrie initiative to provide elementary students with the opportunity to learn more about traffic signage by creating their own traffic sign.

The Grade 1 class at Portage View Public School took part in the 2019 sign design challenge, which was to create a warning sign that notified motorists of distracted pedestrians on the roadway ahead.

Staff had a classroom session with Portage View Public School where we explained the differences between regulatory, warning and temporary signage, and provided examples of each. It was explained to the class that Portage View Public School has direct frontage along Letitia Street, and there may be distracted pedestrians ahead and the purpose of the sign design challenge is to alert drivers of this.

The Grade 8 class at Steele Street Public School took part in the 2019 sign design challenge, which was to create a warning sign that notified motorists that people may be actively loading/unloading passengers into the travel lane of the roadway.

Staff had a classroom session with Steele Street Public School where we explained the differences between regulatory, warning and temporary signage, and provided examples of each. It was explained to the class that Steele Street Public School does not have internal parking for patrons of the school, and Steel Street is utilized during both pick up/drop off times. As a result people may be actively loading/unloading into the active travel lane of the roadway and motorists may encounter pedestrians on the roadway or open vehicle doors, which may pose operational and safety concerns and the purpose of the sign design challenge is to alert drivers of this.

The winning designs was determined by taking all of the submitted signage and posting them at the Operations Centre, where we asked staff in Roads, Parks and Fleet to place a vote for the design they felt best conveyed the message. Please refer to Appendix "A" for the winning designs for from each school.

All of the warning signs created excellent talking points for staff as we received some very original ideas. The winning design was presented back to the class rooms where we notified them that the signs will be installed soon as per Appendix "B". Faculty of both Steele Street Public School and Portage View Public School thanked staff for the opportunity to provide a real world learning project.

Appendix "A"

Portage View Public School



---

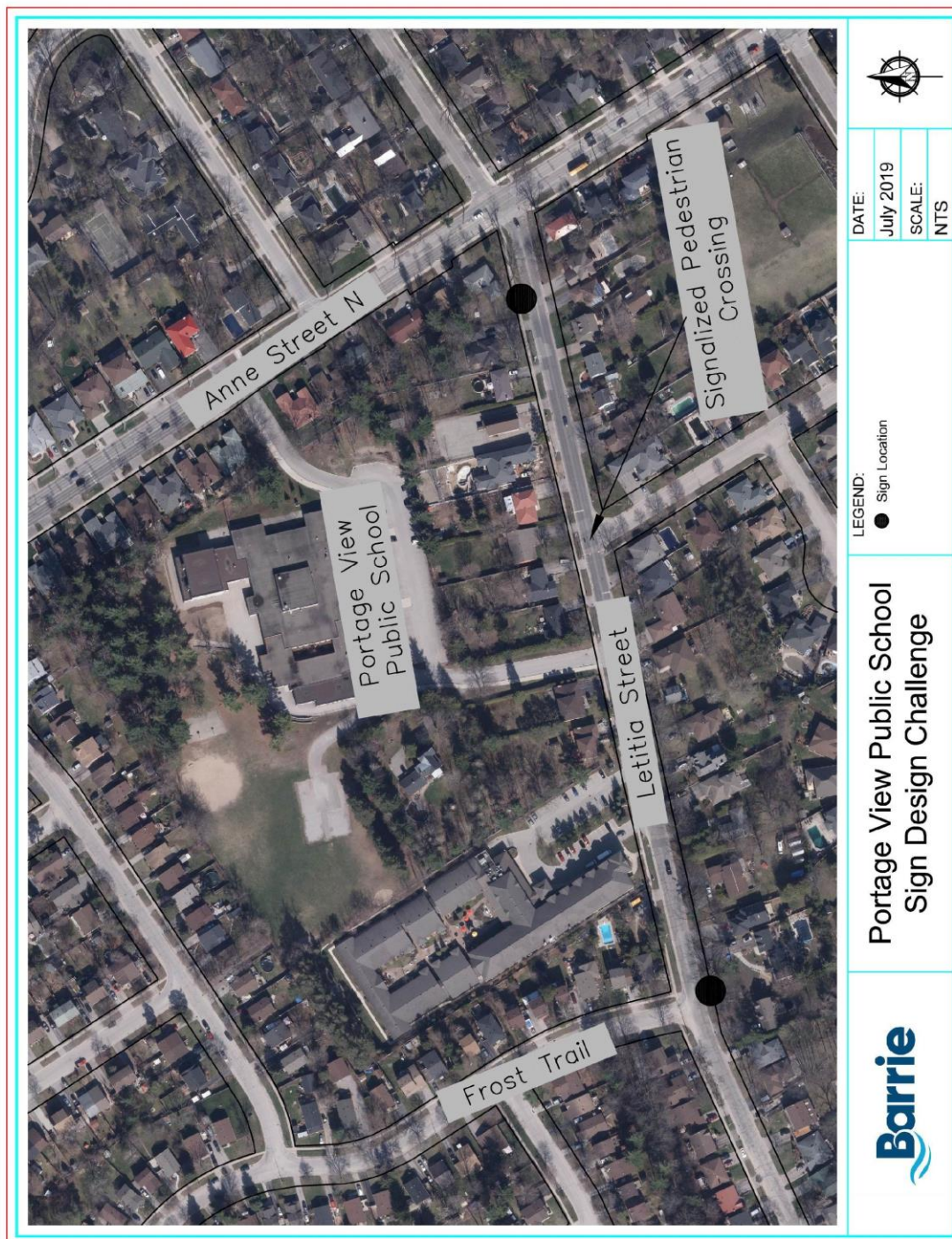
Steele Street Public School





Appendix "B"

Portage View Public School





## Steele Street Public School

